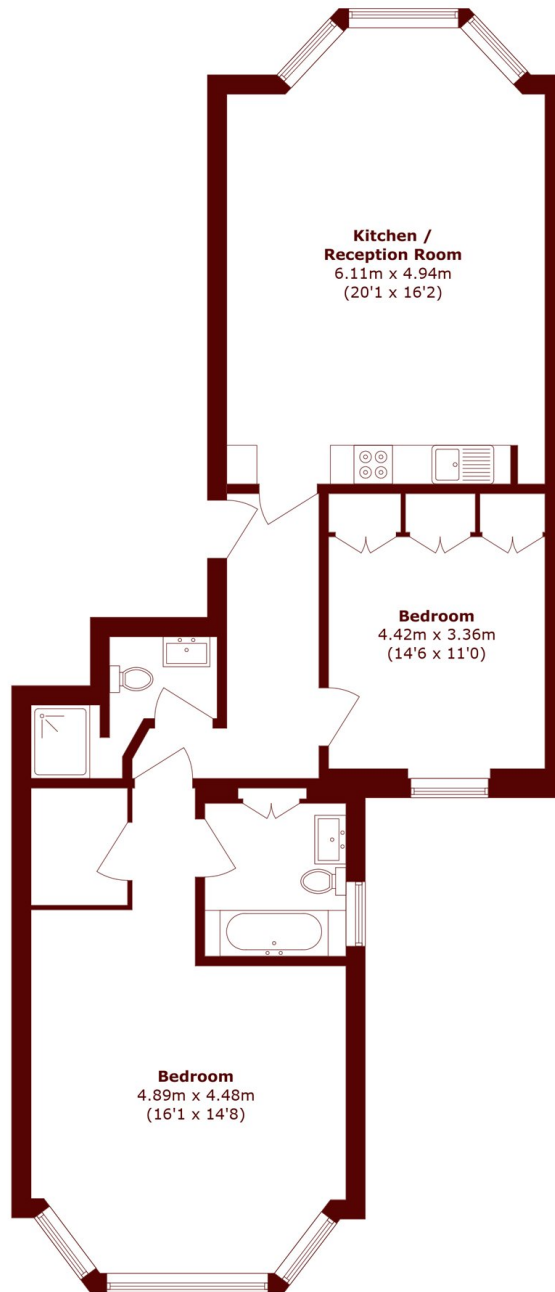


Holland Park Avenue, W11

£1,250,000



- Raised Ground Floor
- Great Location
- Spacious
- High Ceilings
- Stylish Design
- Bright



Total area (approx.): 96.7 sq. m (1040.8 sq. ft)

Marsh & Parsons Holland Park

57 Norland Square, London,
W11 4QJ
020 7605 6890