



29 Silverburn Drive, Ballasalla, Isle of Man, IM9 2EF
Asking Price £415,000

- Detached True Bungalow in Excellent Condition with PP Approved for Extensions
- 2 Double Bedrooms with Fitted Wardrobes
- Generous Lounge
- Large Family Bathroom with Bath and Walk-in Shower
- Dining Room Opening to Fitted Kitchen and Leading to Conservatory
- Garage with Extended Driveway and Large Landscaped Rear Garden



29 Silverburn Drive is a beautifully presented true two-bedroom bungalow, offered in excellent condition and clearly well maintained over the years. The property occupies a generous plot with an impressive landscaped rear garden, providing a wonderful outdoor space to enjoy. Notably, planning permission has been granted to extend on both sides, removing the current conservatory and garage to create a brand-new sunroom, a modern open-plan kitchen, and two further bedrooms, one benefitting from an en suite. This offers huge scope for those seeking to create a larger, contemporary home tailored to their needs.

From the moment you step through the front door into the welcoming hallway, the home offers a bright and airy atmosphere. The living room is positioned to the front of the property and is a spacious, comfortable reception room. The kitchen is fitted with a range of wall and base units and features a large opening into the dining room, which itself enjoys direct access to the rear garden. Double glazed doors flood the space with natural light and lead into the conservatory, another bright and versatile room that also connects seamlessly with the garden.

There are two generous double bedrooms, both of which include fitted wardrobes, together with a large family bathroom complete with bath and separate shower, ideal for modern living.

Externally, the property enjoys a large, sunny rear garden that is fully enclosed, offering multiple seating areas, a lawn with mature shrubs, and excellent additional features including a garden shed and summer house with patio – perfect for outdoor entertaining. To the front, a driveway provides ample off-road parking and extends along the side of the property, further enhancing the practicality of this delightful home.







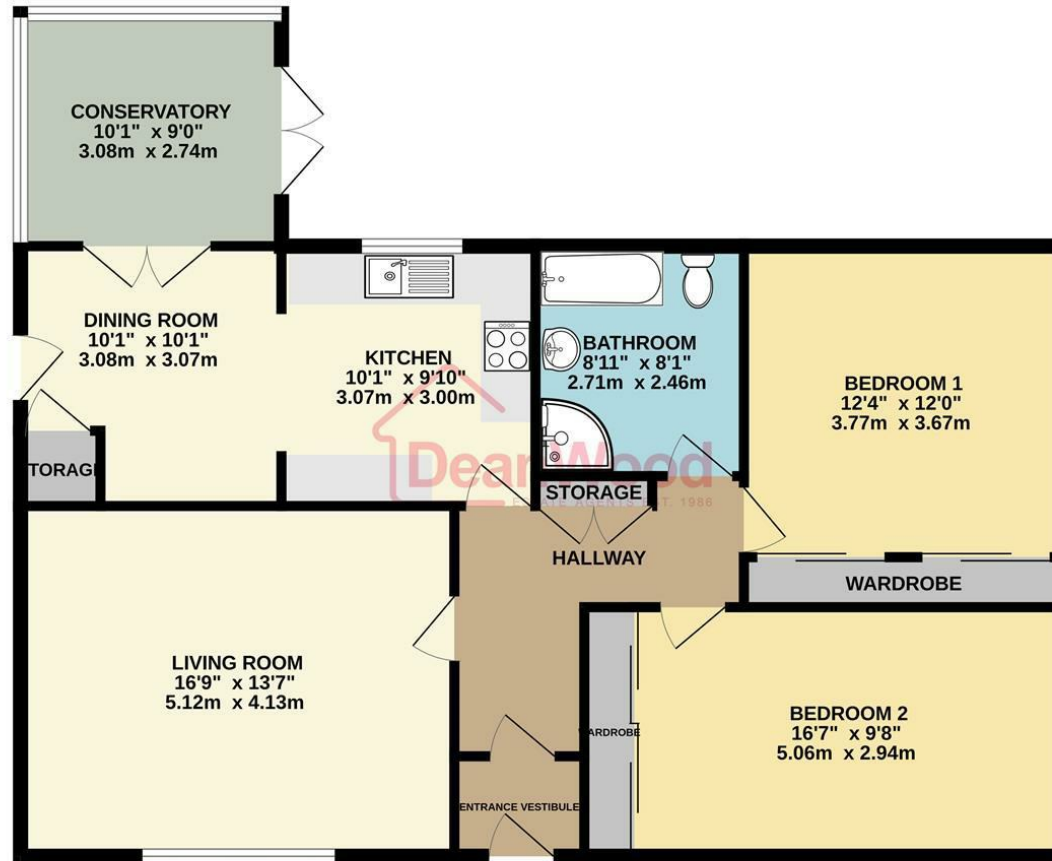






29 Silverburn Drive, Ballasalla, Isle of Man, IM9 2EF





GROUND FLOOR

Not to scale-for identification purposes only
Made with Metropix ©2025

DOUGLAS

37 VICTORIA STREET
DOUGLAS
ISLE OF MAN IM1 2LF

T 01624 620606

F 01624 677363

E info@deanwood.co.im

CASTLETOWN

COMPTON HOUSE
9 CASTLE STREET CASTLETOWN
ISLE OF MAN IM9 1LF

T 01624 825995

F 01624 825996

E castletown@deanwood.co.im

RAMSEY

LEZAYRE HOUSE
87 PARLIAMENT STREET
RAMSEY ISLE OF MAN IM8 1AQ

T 01624 816111

F 01624 816588

E ramsey@deanwood.co.im

These particulars are for information purposes only. They do not constitute or form any contract nor should any statement contained herein be relied upon as a representation of fact. Neither the vendor nor DeanWood Agencies Limited ('the firm'), nor any officer or employee of the firm accept liability or responsibility for any statement contained herein. The vendor does not by these particulars, nor does the firm, nor does any officer or any employee of the firm have any authority to make or give any representation or warranty whatsoever as regards the property or otherwise. It is the sole responsibility of any person interested in the property described in these particulars to make all proper enquiries and searches to verify the description of the property and all other particulars herein.

FOR MORE PROPERTIES VISIT OUR WEBSITE @ deanwood.im