



## Broxwood Way, NW8

£575 Per week

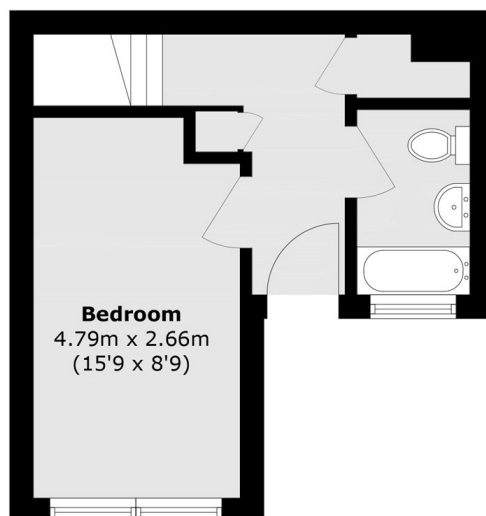
A spacious one double bedroom split level apartment next to Primrose Hill. Bright reception room, open plan kitchen, double bedroom, wooden flooring throughout and communal heating and hot water included.

Kingsland is located a short distance to the open green spaces of Primrose Hill & Regents Park and St Johns Wood underground station giving residents good transport access into the city.

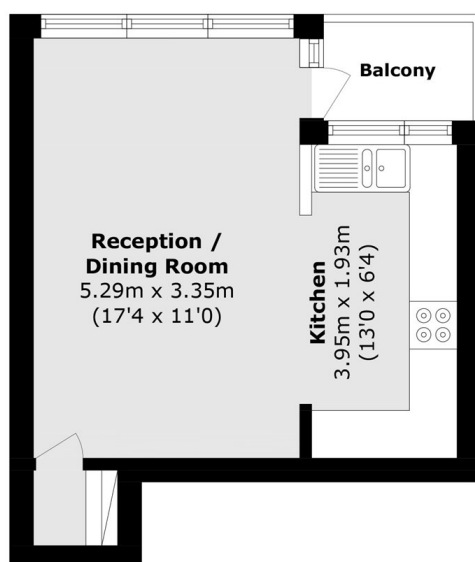
### Features

- One Double Bedroom
- Split Level Apartment
- Wooden Flooring Throughout
- Communal Heating and Hot Water
- Spacious

# Broxwood Way, London, NW8



**Ground Floor**



**Lower Ground Floor**

Total area (approx.): 51.3 sq. m (552.1 sq. ft)  
Balcony area (approx.): 4.3 sq. m (46.2 sq. ft)