



28 Deer Park

Guide Price £235,000

🛏 3 🚿 1 🚗 2

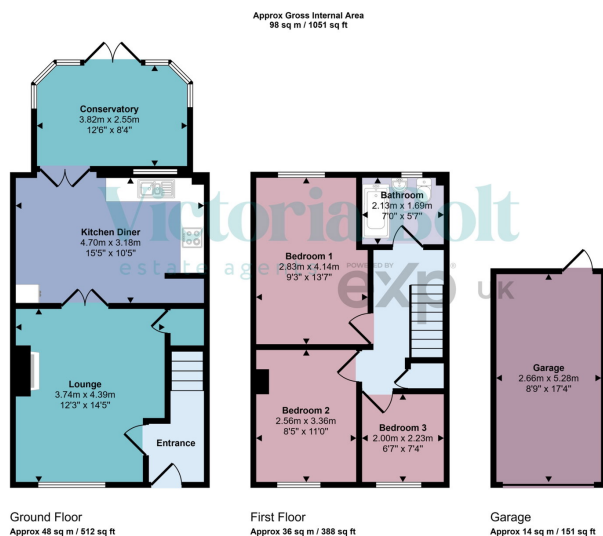


- Three well proportioned bedrooms
- Family bathroom
- Spacious Kitchen/diner
- Lawned enclosed rear garden
- Practical layout for family living
- Two reception rooms and Conservatory
- Ideal first-time buy or investment
- Garage and allocated parking space
- Potential to modernise
- Convenient transport links



Situated in a popular area of Ivybridge, this three-bedroom terraced home offers comfortable living with great convenience. Priced at £235,000, the property features two reception rooms, conservatory, a practical kitchen, three well-proportioned bedrooms, and a family bathroom.

Outside, the home benefits from enclosed garden space, a garage, and off-road parking. Ideally located close to local amenities, schools, and transport links, this property is perfect for first-time buyers, families, or investors.



This floorplan is only for illustrative purposes and is not to scale. Measurements of rooms, doors, windows, and any items are approximate and no responsibility is taken for any error, omission or mis-statement. Icons of items such as bathroom suites are representations only and may not look like the real items. Made with Made Snappy 360.

