

est 1979

Jeremy
Leaf & Co.



Brackenbury Road, London

£735,000

- 3/4 Bedroom House
- Primary and secondary schools nearby
- East Finchley station 0.7 miles away.
- Chain free
- located close to local amenities
- Viewings are highly recommended!

98 High Road, London, N2 9EB
020 8444 5222

eastfinchley@jeremyleaf.co.uk
<https://www.jeremyleaf.co.uk/>

Brackenbury Road, London, N2 0SS

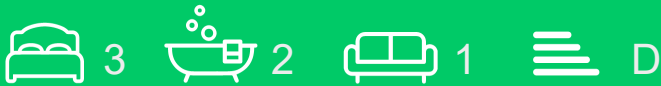
Jeremy Leaf & Co are delighted to offer this three/four-bedroom terraced home, ideally located on the sought-after Brackenbury Road.

Offering generous and flexible living space, the property presents a fantastic opportunity for families, investors, or buyers looking for a home with future potential.

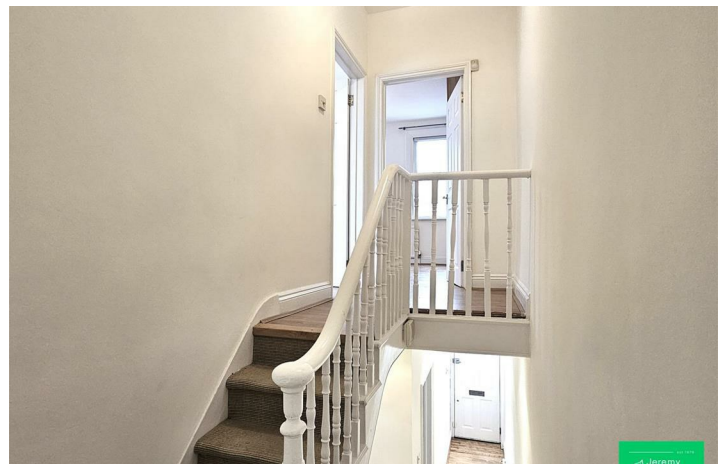
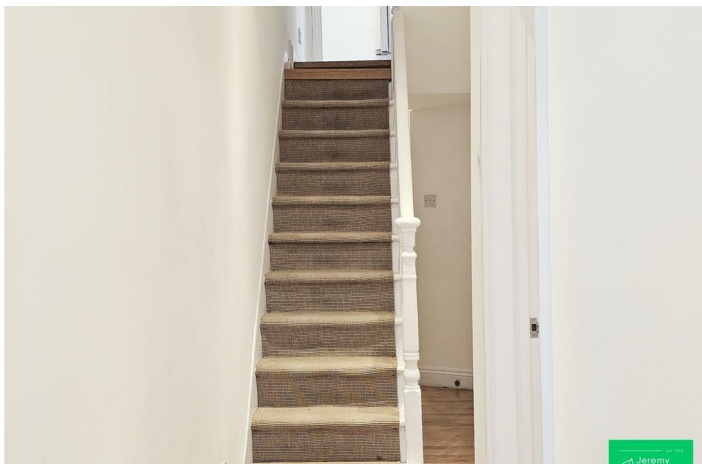
The ground floor comprises a spacious front reception room with an electric fireplace, a well-proportioned kitchen to the rear with direct access to the garden, and a convenient guest W.C. There is also a separate dining room, which could be used as a fourth double bedroom, home office, or additional living space depending on requirements.

The first floor features two generous double bedrooms (one with floor-to-ceiling wardrobes), a further bedroom ideal as a nursery or study, and a family bathroom.

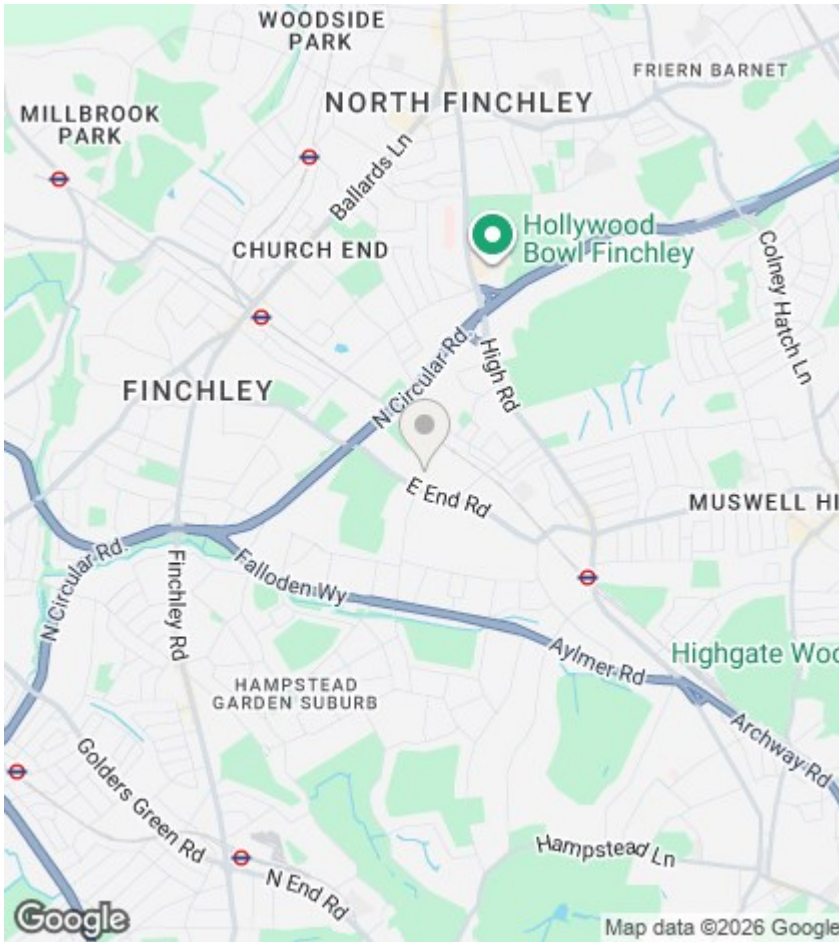
Outside, the property benefits from a private, low-maintenance west-facing garden. There is potential to extend the ground floor or convert the loft to create further accommodation, subject to the necessary planning permissions.



Council Tax Band: E







Directions

Viewings

Viewings by arrangement only. Call 020 8444 5222 to make an appointment.

EPC Rating:

D

