



6 Pardoe Crescent, Barry

Barry

Guide Price £300,000



6 Pardoe Crescent

Barry, Barry

Refurbished 3-bed semi-detached bungalow with channel views, modern kitchen, gardens front and rear, driveway parking, outbuilding, and stylish interiors in a sought-after location. Council Tax band: C

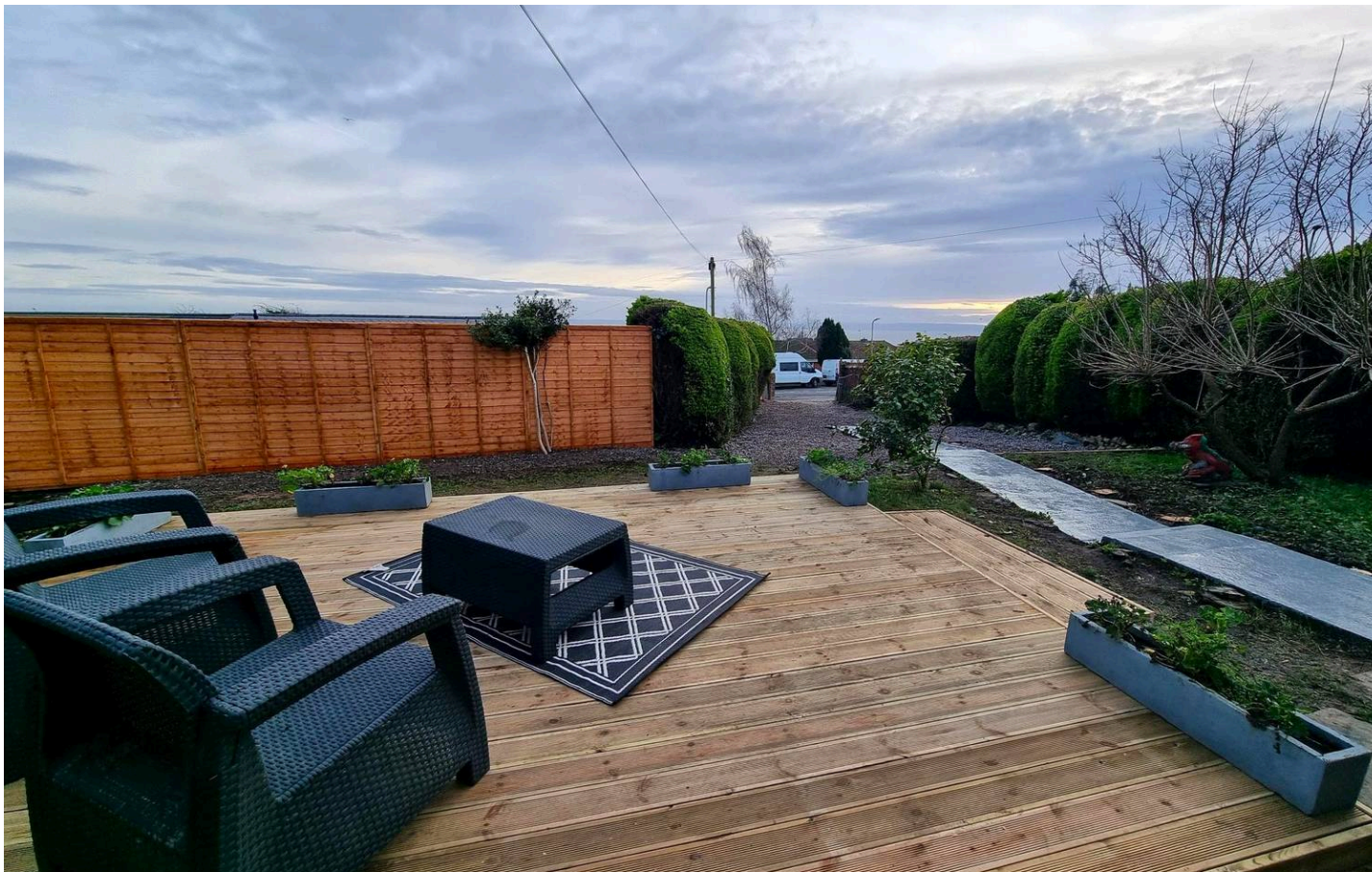
Tenure: Freehold

EPC Energy Efficiency Rating: D

EPC Environmental Impact Rating: C

- SEMI DETACHED BUNGALOW
- FULL INTERNAL REFURBISHMENT
- THREE BEDROOMS
- FULLY FITTED KITCHEN
- GOOD SIZED GARDENS
- DOUBLE GLAZED
- GAS CENTRAL HEATING
- CHANNEL VIEWS





Entrance Porch

3' 10" x 5' 6" (1.17m x 1.68m)

Enter into a UPvc double glazed porch. Wood effect flooring, glazed door into :-

Hallway

15' 9" x 5' 9" (4.80m x 1.75m)

A nice open hallway with wood effect laminate flooring. Neutral décor. Tall modern radiator. Cupboard housing electric consumer unit. Flat plastered ceiling with loft access. Newly replaced doors into :-

Lounge

18' 1" x 11' 10" (5.51m x 3.61m)

Flat plastered walls and ceiling. Wood effect laminate flooring. Sliding patio doors with views across the Bristol channel. Feature fireplace . Matt black sockets. Tall modern radiator. Two ceiling light fittings. Open planned into kitchen :-

Kitchen

13' 9" x 10' 1" (4.19m x 3.07m)

A modern newly fully fitted kitchen. Continuation of wood effect laminate flooring. A range of base and eye level units with push fronted door, complementing worksurfaces and breakfast bar, wall mounted glazed display cupboard with lighting. Inset one and a half bowl sink with mixer tap over. Built in oven and hob with extractor fan over. Integrated dish washer, fridge freezer and washer/dryer. Window to rear UPvc glazed door giving rear access. Mat black sockets one with USB port.

Bedroom One

12' 2" x 10' 2" (3.71m x 3.10m)

Newly fitted carpet, tall modern radiator. Built in storage cupboard. Flat plastered walls and ceiling. Window to front with views towards the Bristol channel. Mtt black sockets.

Bedroom Two

9' 8" x 11' 9" (2.95m x 3.58m)

Another double bedroom with newly fitted carpet, flat plastered walls and ceiling. Neutral décor. Built in



GARDEN

A really good sized frontage. with shingled and lawned areas with mature planting. A raised decked patio area with views across the channel. Pathway leading to entrance. Garden storage shed to remain. Brick built out building to the side. The rear garden is enclosed. mainly laid to lawn and has mature fruit trees.

DRIVEWAY

3 Parking Spaces

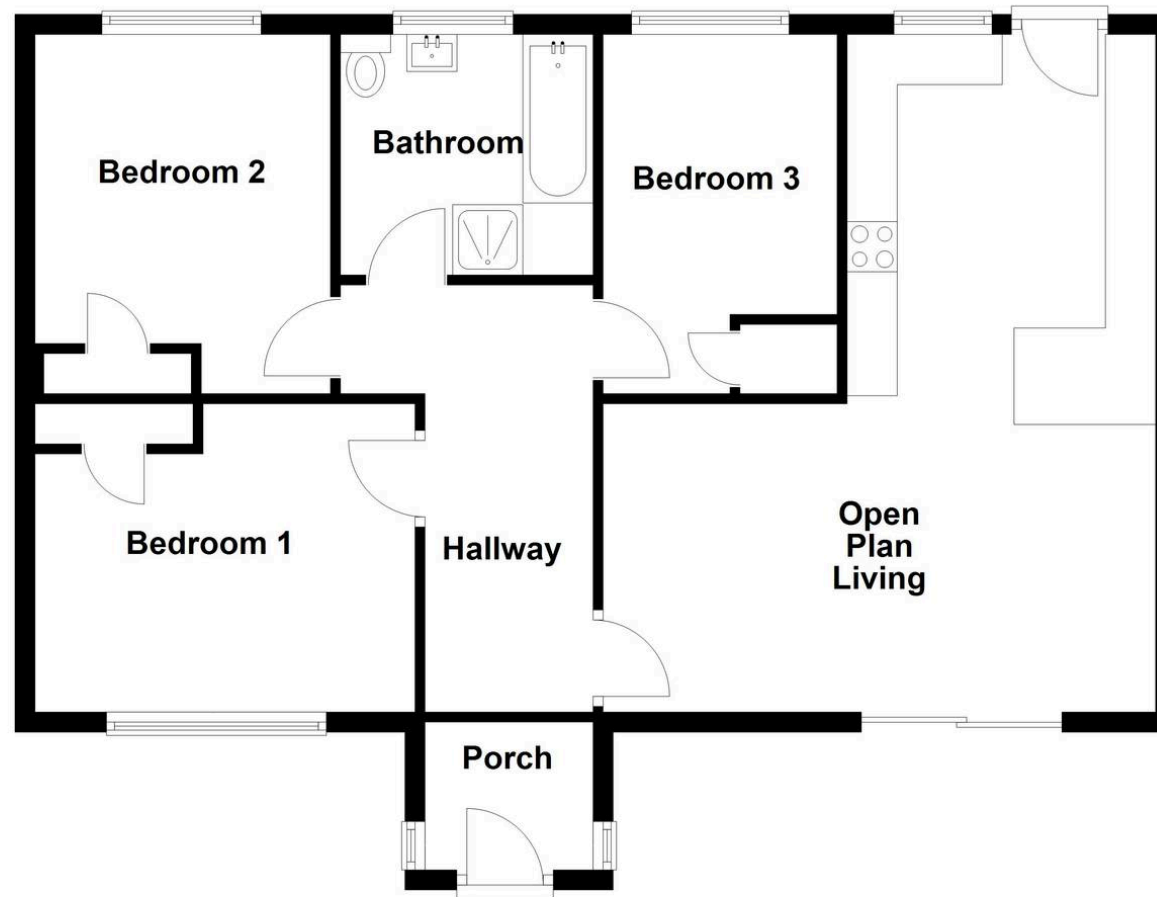
A shingled driveway for several cars, with wrought iron gates.





Ground Floor

Approx. 80.0 sq. metres (860.8 sq. feet)



Total area: approx. 80.0 sq. metres (860.8 sq. feet)

Daniel Matthew Estate Agents Barry

14 High Street Barry, Vale of Glamorgan - CF62 7EA

01446502806

barry@danielmatthew.co.uk

www.danielmatthew.co.uk/

DanielMatthew
ESTATE AGENTS