



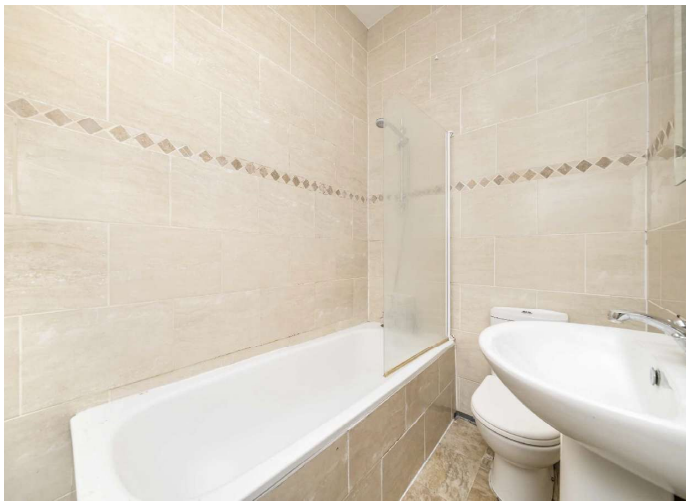
Ladbroke Grove, W10

£400,000



- Victorian Conversion
- Second Floor
- Separate Kitchen
- Spacious Reception
- Double Bedroom
- Prime Location





ABOUT THE PROPERTY

Set on the second floor of a Victorian building, this one bedroom apartment has a spacious reception, separate kitchen and generous windows, moments from Ladbroke Grove and Portobello Road.

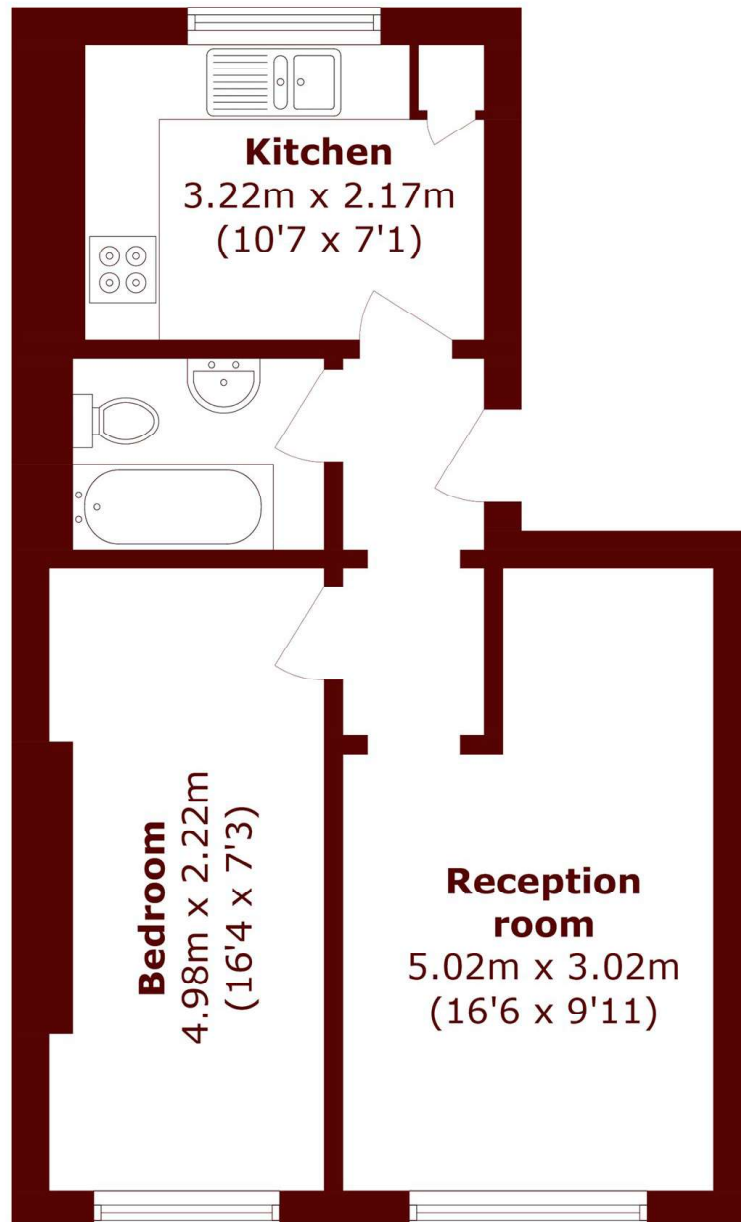
The flat has a well-proportioned reception room with space to dine and relax. High ceilings and generous windows help create a welcoming feel, while the separate kitchen has plenty of storage and worktop space for everyday cooking.

The double bedroom is a comfortable size with room for wardrobes and additional furniture. A modern bathroom and hallway storage complete the layout, making the apartment an appealing option for a first-time buyer or as a pied-à-terre.

Moments from Ladbroke Grove, Portobello Road and Golborne Road, residents are surrounded by cafes, markets and local shops. Excellent bus and underground links make it easy to reach central London, the West End and wider transport connections.

Ladbroke Grove offers independent cafes, restaurants and boutiques, with Portobello and Golborne Road close by. Ladbroke Grove and Westbourne Park stations provide excellent links into central London and beyond.





Total area (approx.): 41.7 sq. m (448.8 sq. ft)

Marsh & Parsons North Kensington

136 Lancaster Road, London,
W11 1QU
020 7313 8350