

Havelock Road, SW19

£699,950

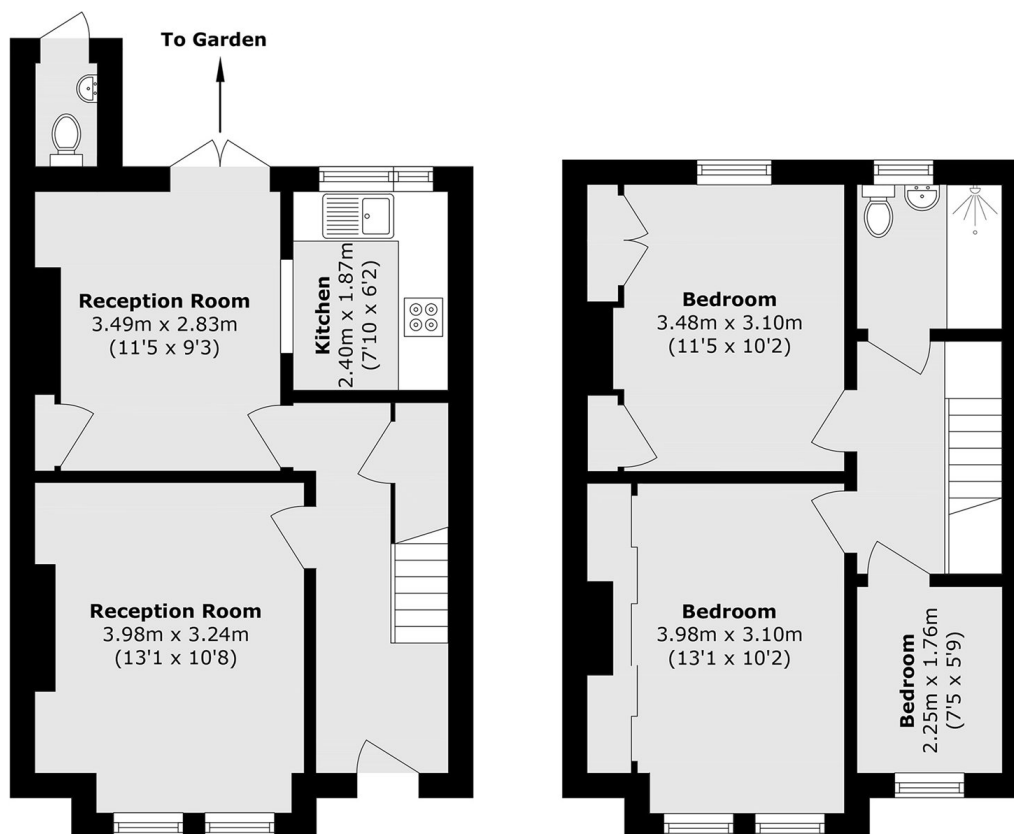
An opportunity to purchase this three bedroom end of terrace Victorian house, located on a quiet tree-lined street. Offering one of the largest gardens on the road, the property has potential to extend to the rear and into the loft, subject to the relevant planning,

Located on a wide, quiet and tree-lined street, just a short walk from a fantastic selection of high street shops, popular restaurants and excellent transport links from Haydons Road.

Features

- Victorian House
- Three Bedrooms
- End of Terrace
- Potential to Extend S.T.P.P
- Large South Facing Garden
- No Onward Chain

Havelock Road, London, SW19



Ground Floor

First Floor

Total area (approx.): 72.7 sq. m (782.5 sq. ft)

External W.C (approx.): 0.9 sq. m (9.6 sq. ft)