



**OVER 60?**

Secure this property  
for up to **59% less!**

**Guide Price**

**£290,000**

**Freehold**

2x  2x  1x 

**Mountbatten Drive,  
Newport, Isle of Wight,  
PO30**

**Pittis**   
Helping you move forwards





## Main features

- Well appointed semi-detached bungalow on a corner plot
- Located in a popular location near to schools
- Primary bedroom with en-suite
- Useful outbuilding and summerhouse
- Enclosed rear garden with patio

## Accommodation

### GROUND FLOOR

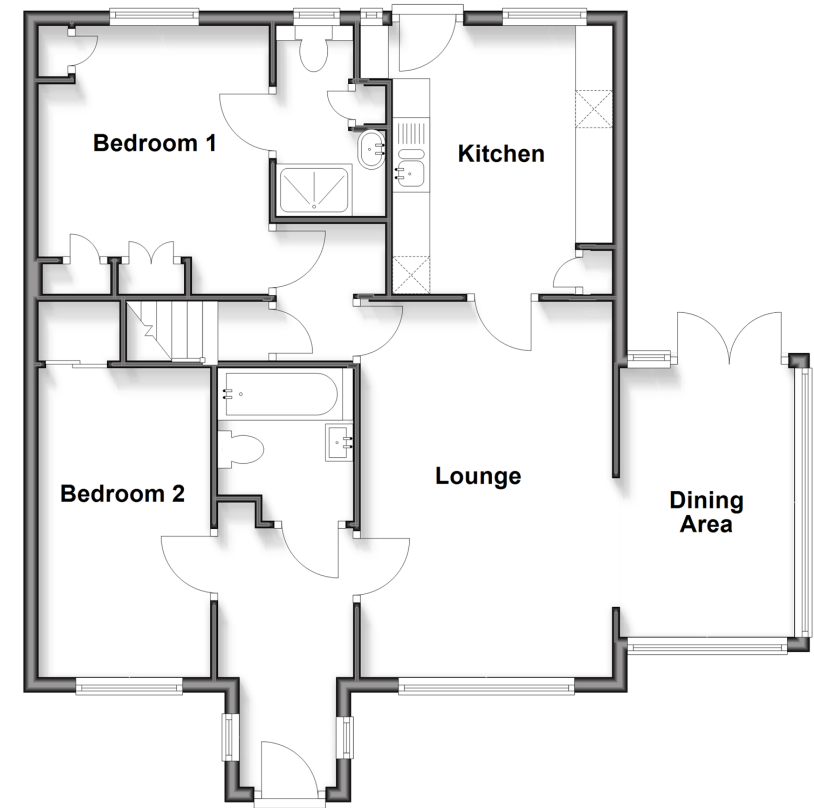
Entrance Porch  
Hallway  
Lounge: 16'6 x 11'1 (5.03m x 3.38m)  
Dining Area: 15'9 x 8'2 (4.80m x 2.49m)  
Kitchen: 11'10 x 10'11 (3.61m x 3.33m)  
Bedroom 1: 11'10 x 10'2 (3.61m x 3.10m)  
En-suite Shower Room  
Bedroom 2: 13'8 x 7'6 (4.17m x 2.29m)  
Bathroom

### OUTSIDE

Front Garden  
Rear Garden  
Car Port  
Workshop / Outbuilding  
Summerhouse

### Ground Floor

Approx. 78.4 sq. metres (844.1 sq. feet)



**Call Newport - 01983 528888 ■ [pittis.co.uk](http://pittis.co.uk)**

- Legal advice should be taken to verify fixtures/fittings, planning, alterations and/or lease details
- Appliances & services are untested, dimensions are approximate and floor plans are not to scale
- Through a Homewise Home For Life Plan people aged 60+ can secure this property for up to 59% less, by purchasing a Lifetime Lease



60324049/20251021/EP/NH