



Plumbers Row, E1

£2,600 Per calendar month

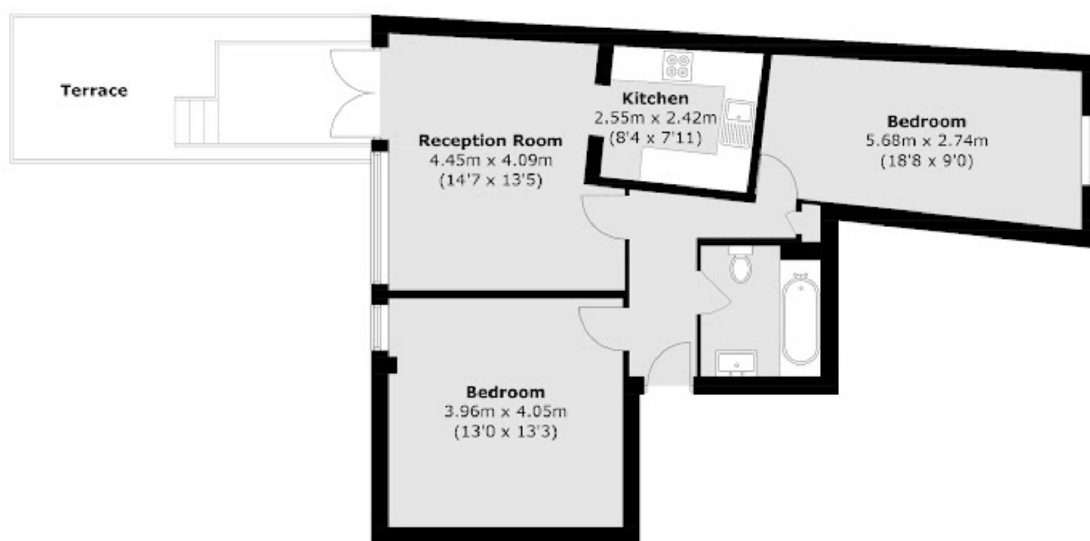
A spacious two bedroom apartment set within a private development. The well presented property has a large and bright reception, modern kitchen and two bedrooms and a charming private patio.

Albany Court is located just a short distance from Spitalfields Market & Liverpool Street Station where there are endless choices of local shops, restaurants and bars.

Features

- Two Double Bedrooms
- Wood Flooring
- Lift Access
- Secure Entry
- Patio Garden
- Aldgate

Plumbers Row, London, E1



Total area (approx.): 65.7 sq. m (707.2 sq. ft)
Terrace (approx.): 15.2 sq. m (163.6 sq. ft)