



Moy Lane, SE18

£285,000

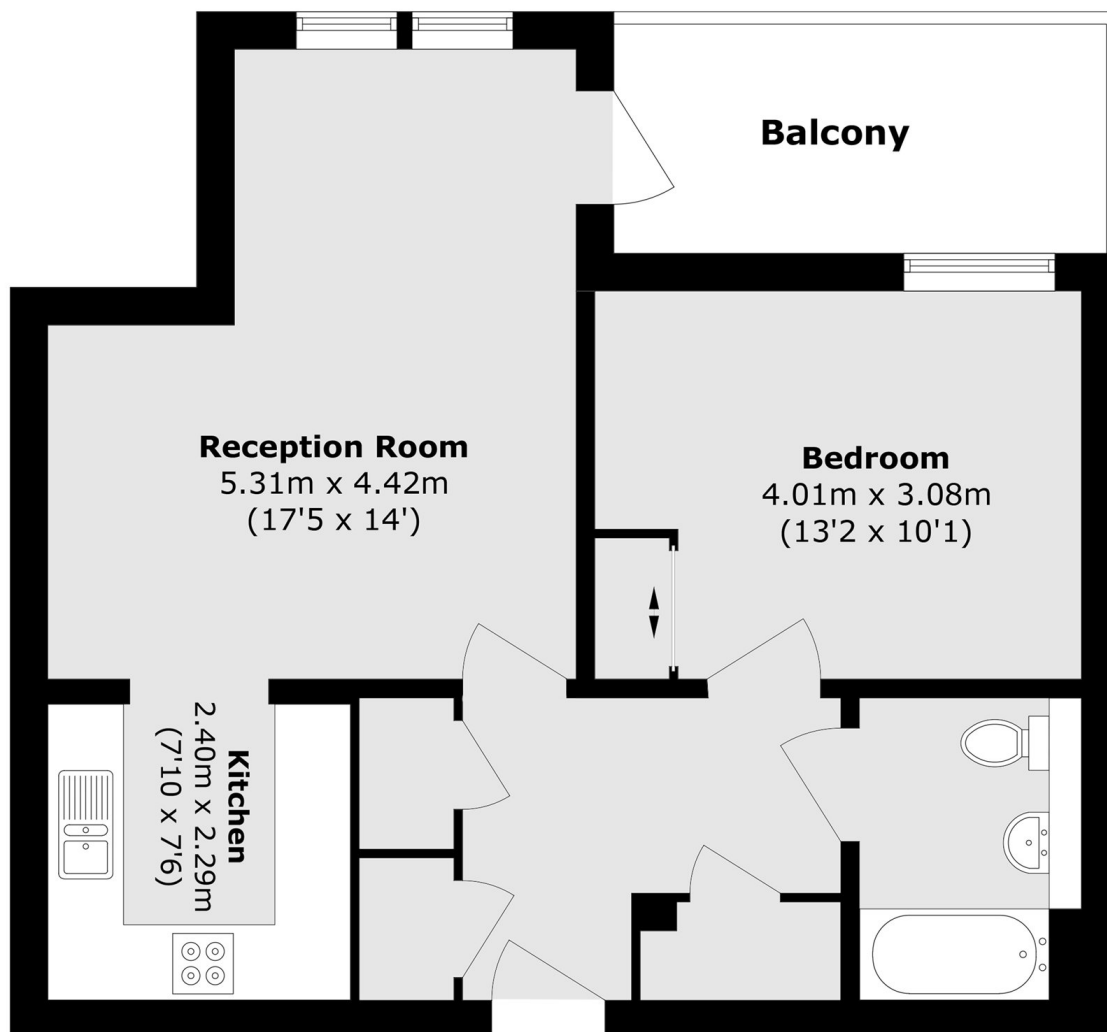
Located on the 5th floor, this well-presented one-bedroom apartment offers modern living with the benefit of a private balcony and excellent storage throughout. The property features a semi open-plan kitchen and reception room, providing a practical and sociable living space with direct access to the balcony. The kitchen is well laid out with ample cupboard and worktop space. The double bedroom benefits from a built-in wardrobe, while additional storage cupboards throughout the apartment to enhance everyday convenience. A well-appointed bathroom and welcoming hallway complete the accommodation.

Situated in a quiet residential development minutes to the centre of Woolwich for the DLR and overhead station plus all the benefits of the town centre. The Elizabeth line is within close proximity and the property is 15 minutes to Canary Wharf and 25 minutes to Liverpool street.

Features

- One Bedroom Apartment
- Private Balcony
- Integrated Appliances
- Close To Elizabeth Line & Shops
- Semi-Open Plan Reception
- Beautifully Decorated Throughout

Moy Lane, London, SE18



Total area (approx.): 50.9 sq. m (547.8 sq. ft)

Balcony area (approx.): 7.4 sq. m (76.4 sq. ft)