



## 5 Calleva Close, Basingstoke - RG22 4TD

£325,000 Freehold

TWO BEDROOMS • EXCELLENT CONDITION • IDEAL FIRST TIME PURCHASE • TWO ALLOCATED PARKING SPACES •  
ENCLOSED REAR GARDEN • CLOSE TO LOCAL AMENITIES

01256 321777

[www.thepropertyexplorer.co.uk](http://www.thepropertyexplorer.co.uk)

the property  
**explorer**



Immaculate 2-Bedroom Terraced House – Ideal for First-Time Buyers. A beautifully presented 2-bedroom terraced house, perfect for first-time buyers. The property is finished to a high standard throughout and has been meticulously maintained. Inside, the home offers a spacious and light living environment, with nicely sized bedrooms, well appointed kitchen, and family bathroom. Outside, there is an enclosed rear garden and allocated parking for convenience.

Council Tax band: C

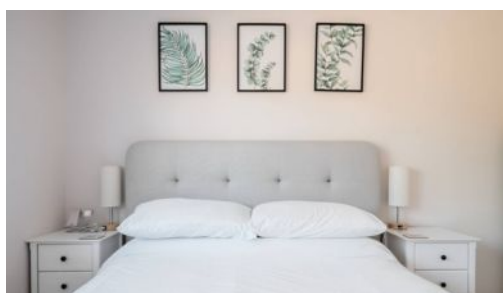
Tenure: Freehold

EPC Energy Efficiency Rating: C

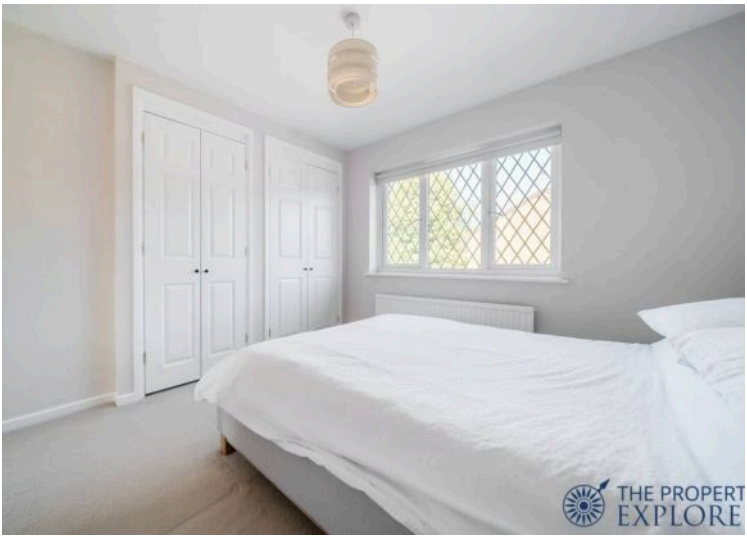
EPC Environmental Impact Rating: C



- TWO BEDROOMS
- EXCELLENT CONDITION
- IDEAL FIRST TIME PURCHASE
- TWO ALLOCATED PARKING SPACES
- ENCLOSED REAR GARDEN
- CLOSE TO LOCAL AMENITIES



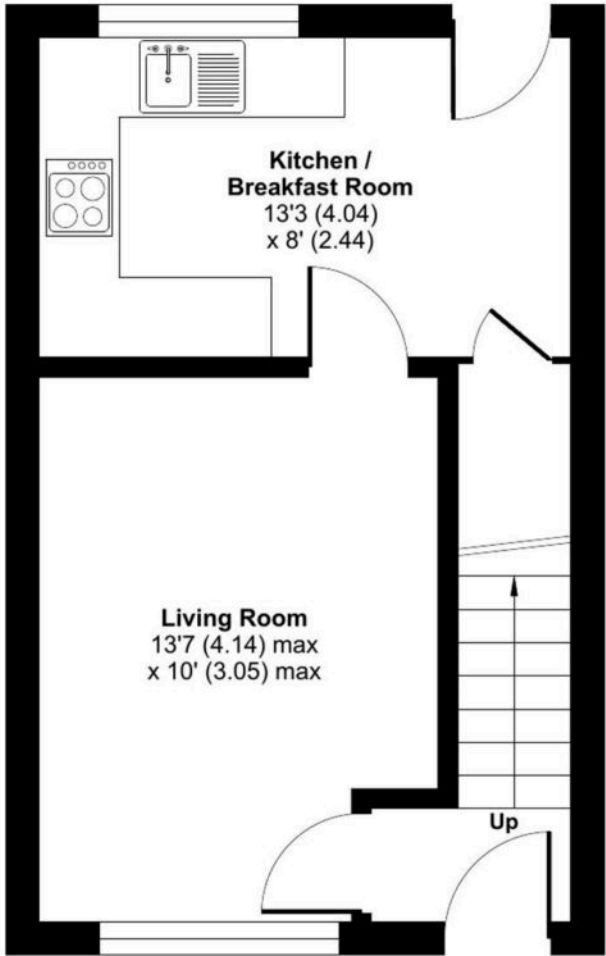




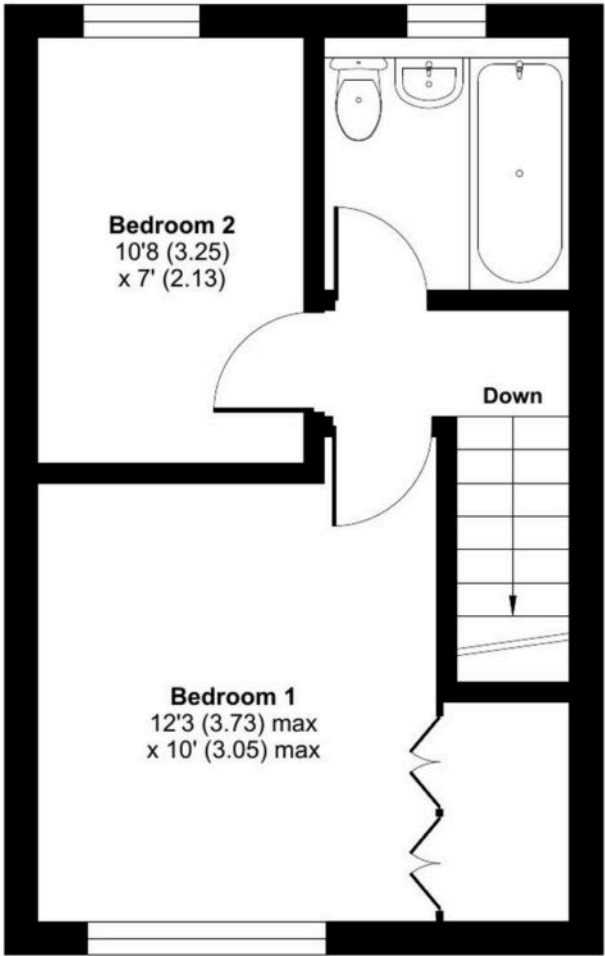
# Calleva Close, Basingstoke, RG22

Approximate Area = 590 sq ft / 54.8 sq m

For identification only - Not to scale



GROUND FLOOR



FIRST FLOOR



Floor plan produced in accordance with RICS Property Measurement Standards incorporating International Property Measurement Standards (IPMS2 Residential). © nchecon 2024. Produced for Property Explorer. REF: 1169683