

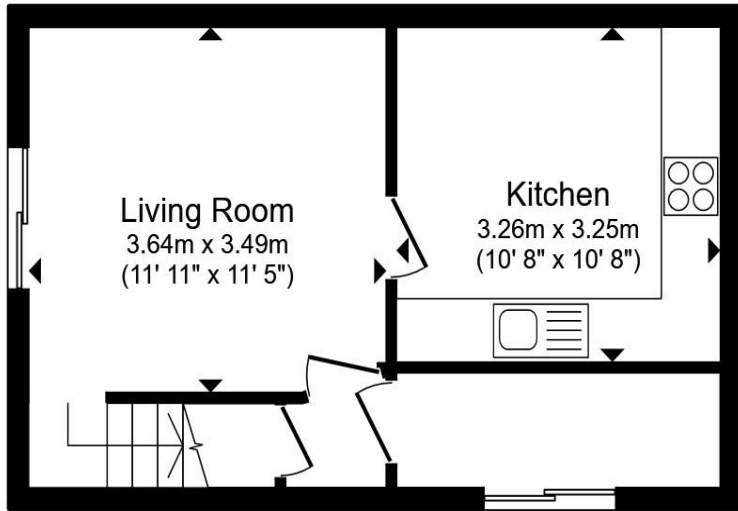


St. Georges Way, Impington, Cambridge, CB24 9AF

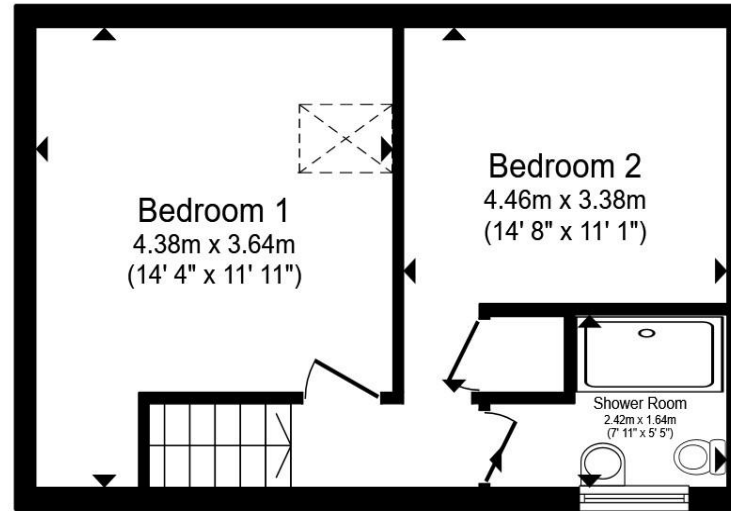
welcome to St. Georges Way, Impington

A well presented one bedroom starter home in a prime residential area with an enclosed garden and single garage with excellent access to the Cambridge Science Park and Cambridge North Station.





Ground Floor



First Floor

Accommodation -

Entrance Porch

Entrance Hall

Living Room

Kitchen

First Floor

Mezzanine Bedroom

Shower Room

Outside

Total floor area 61.3 m² (660 sq.ft.) approx

This floor plan is for illustrative purposes only. It is not drawn to scale. Any measurements, floor areas (including any total floor area), openings and orientation are approximate. No details are guaranteed, they cannot be relied upon for any purpose and they do not form part of any agreement. No liability is taken for any error, omission or misstatement. A party must rely upon its own inspection(s). Powered by www.focalagent.com



welcome to St. Georges Way, Impington

- "Q" Type Terrace House
- Double Bedroom
- New Kitchen
- New Bathroom
- Gas Central Heating

Tenure: Freehold EPC Rating: C
Council Tax Band: B

£280,000



Please note the marker reflects the
postcode not the actual property

view this property online [sequencehome.co.uk/Property/HIS100212](https://www.sequencehome.co.uk/Property/HIS100212)



Property Ref:
HIS100212 - 0003

1. MONEY LAUNDERING REGULATIONS Intending purchasers will be asked to produce identification documentation at a later stage and we would ask for your co-operation in order that there is no delay in agreeing the sale. 2. These particulars do not constitute part or all of an offer or contract. 3. The measurements indicated are supplied for guidance only and as such must be considered incorrect. Potential buyers are advised to recheck measurements before committing to any expense. 4. We have not tested any apparatus, equipment, fixtures or services and it is in the buyers interest to check the working condition of any appliances. 5. Where an EPC, or a Home Report (Scotland only) is held for this property, it is available for inspection at the branch by appointment. If you require a printed version of a Home Report, you will need to pay a reasonable production charge reflecting printing and other costs. 6. We are not able to offer an opinion either written or verbal on the content of these reports and this must be obtained from your legal representative. 7. Whilst we take care in preparing these reports, a buyer should ensure that his/her legal representative confirms as soon as possible all matters relating to title including the extent and boundaries of the property and other important matters before exchange of contracts.



01223 214400



histon@tylers.net



19 High Street, CAMBRIDGE, Cambridgeshire,
CB24 9JD



[sequencehome.co.uk](https://www.sequencehome.co.uk)