

84 Weald Bridge Road

North Weald, Epping

Welcome to Weald Bridge Road. Awash with light, space, function and versatility, this three double bedroom home is perfect for a growing family to love. Sat in much-loved North Weald, here find breath-taking countryside views with the towns of Epping, Harlow and Ongar just a short drive away. Council Tax band: F

Tenure: Freehold

- Spacious family home
- Open plan kitchen / family room
- Ensuite shower room
- Utility room
- Driveway
- Spacious private garden



Entrance Hallway

Living Room

14' 6" x 14' 6" (4.43m x 4.43m)

Study

7' 3" x 8' 4" (2.20m x 2.53m)

Open Plan Kitchen

21' 5" x 10' 6" (6.54m x 3.21m)

Living Area

13' 0" x 23' 0" (3.97m x 7.01m)

Utility Room

10' 0" x 8' 4" (3.05m x 2.54m)

Sun Room

13' 5" x 16' 0" (4.08m x 4.87m)

Garage

6' 0" x 8' 4" (1.83m x 2.54m)

WC

7' 3" x 4' 8" (2.20m x 1.41m)

Bedroom

16' 9" x 14' 2" (5.11m x 4.33m)

Ensuite Shower Room

11' 3" x 7' 5" (3.43m x 2.27m)

Bedroom

14' 3" x 10' 8" (4.34m x 3.25m)

Bedroom

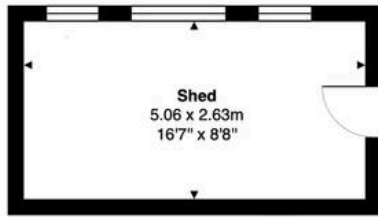
9' 2" x 12' 8" (2.79m x 3.86m)

Bathroom

13' 9" x 8' 9" (4.20m x 2.66m)

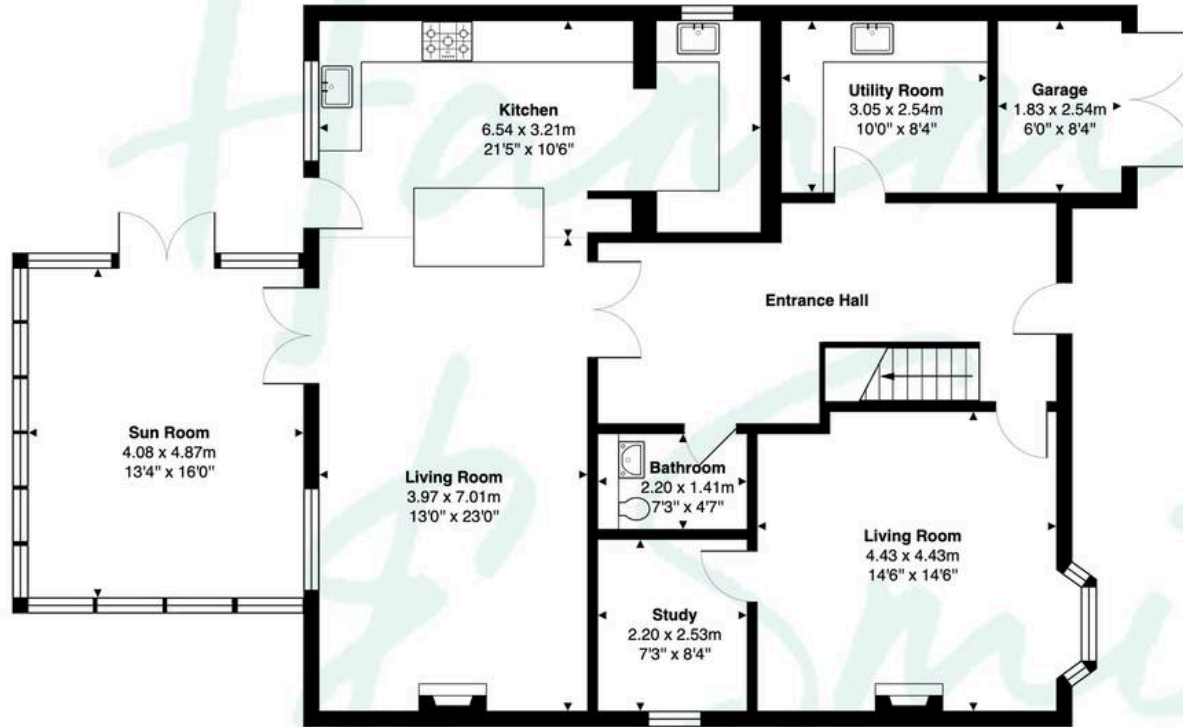




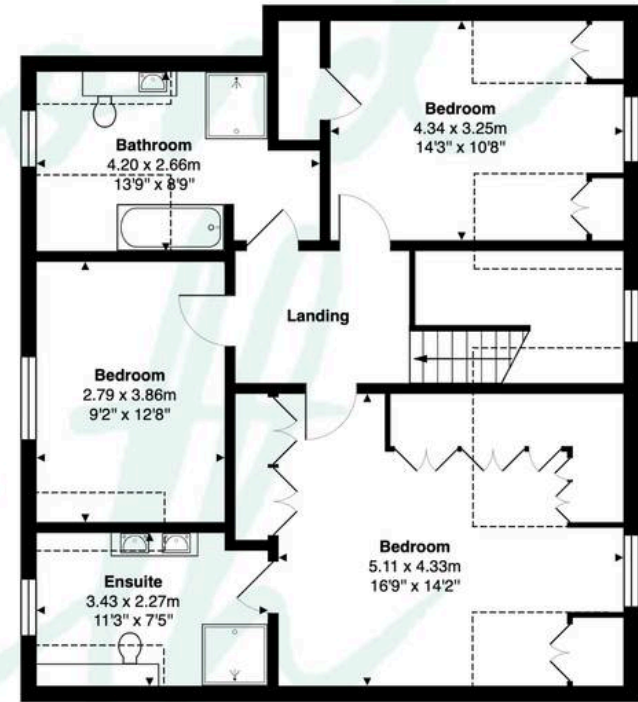


84 Weald Bridge Road, North Weald, Epping, CM16 6ES

(Not shown in actual location)



Ground Floor



First Floor

Total Area: Approx. 216.0 sq m (2,324.8 sq ft)

This floor plan is for illustrative purposes only and is not to scale.
Measurements are approximate and intended as a guide. All details should be verified independently.