



HEARTWOOD  
HOMES

# Apex House, Camp Road St Albans AL1 5FU

£350,000

🛏️ 1 🚿 1 🚿 1



Step into a world of contemporary luxury with this exceptionally spacious one-bedroom duplex apartment, located in the prestigious Apex House on the highly sought-after Camp Road in St. Albans. Designed to offer a seamless blend of style, comfort, and functionality, this unique property spans two floors, delivering an unparalleled living experience.

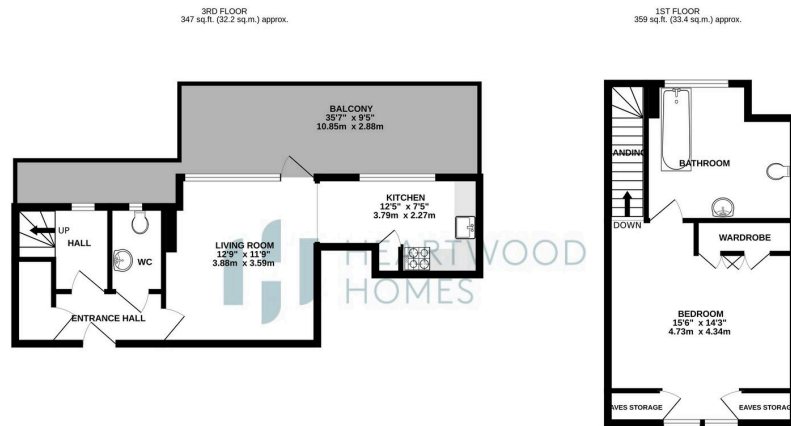
The moment you enter, you'll be greeted by an expansive open-plan living space that exudes sophistication. With its over sized windows, this area is bathed in natural light, creating a bright and airy atmosphere. High ceilings and sleek, premium finishes further elevate the space, making it ideal for both relaxing and entertaining. Adjacent to the living area, the modern designer kitchen boasts top-of-the-line integrated appliances, elegant cabinetry, and generous counter space. Whether you're preparing a casual breakfast or hosting a dinner party, this kitchen is as functional as it is beautiful.

Upstairs, the oversized bedroom offers a private retreat with ample room for additional furnishings and fitted wardrobes that provide practical storage solutions. This tranquil space is perfect for rest and relaxation after a long day. The chic bathroom continues the theme of luxury, featuring high-end fixtures and stylish tiling that gives it a spa-like feel.

The property also benefits from its prime location in St. Albans. Situated on the peaceful Camp Road, it's just a short stroll to the vibrant city centre, where you'll find a mix of independent boutiques, popular restaurants, and cultural landmarks. For those who commute, St. Albans City Station is within easy reach, offering fast train links to London St. Pancras in approximately 20 minutes. Nature lovers will appreciate the close proximity to Verulamium Park and other green spaces, ideal for leisurely walks or outdoor activities.

This duplex apartment, with its generous layout and high-end features, is perfect for professionals, couples, or anyone looking for a luxurious yet low-maintenance home. Apex House also offers secure





TOTAL FLOOR AREA - 706 sq ft (65.6 sq.m.) approx.  
 Whilst every attempt has been made to ensure the accuracy of the floorplans contained here, measurements of floors, windows, doors and any other items are approximate and no responsibility is taken for any error, omission or mis-statement. This plan is for illustrative purposes only and should be used as such by any prospective purchaser. The services, systems and appliances shown have not been tested and no guarantee as to their operability or efficiency can be given.  
 Made with Neopage ©2020



- This unique one-bedroom apartment spans two floors, offering a generous and well-proportioned space.
- Fully equipped with top-of-the-line integrated appliances
- The expansive living and dining area features oversized windows, flooding the space with natural light
- The upstairs bedroom provides a private retreat
- The modern bathroom is finished to a high standard, featuring premium fixtures
- St. Albans City Station is within close proximity, providing fast train services
- The apartment features a secure entry system and allocated parking,
- Situated on Camp Road, the property is just a short walk from St. Albans city centre
- Enjoy nearby parks such as Verulamium Park, perfect for outdoor activities
- With its combination of size, style, and location, this apartment is ideal for professionals



Energy Efficiency Rating		
	Current	Potential
Very energy efficient - lower running costs		
(92 plus) <b>A</b>		
(81-91) <b>B</b>	83	83
(69-80) <b>C</b>		
(55-68) <b>D</b>		
(39-54) <b>E</b>		
(21-38) <b>F</b>		
(1-20) <b>G</b>		
Not energy efficient - higher running costs		
<b>England &amp; Wales</b>	EU Directive 2002/91/EC	