



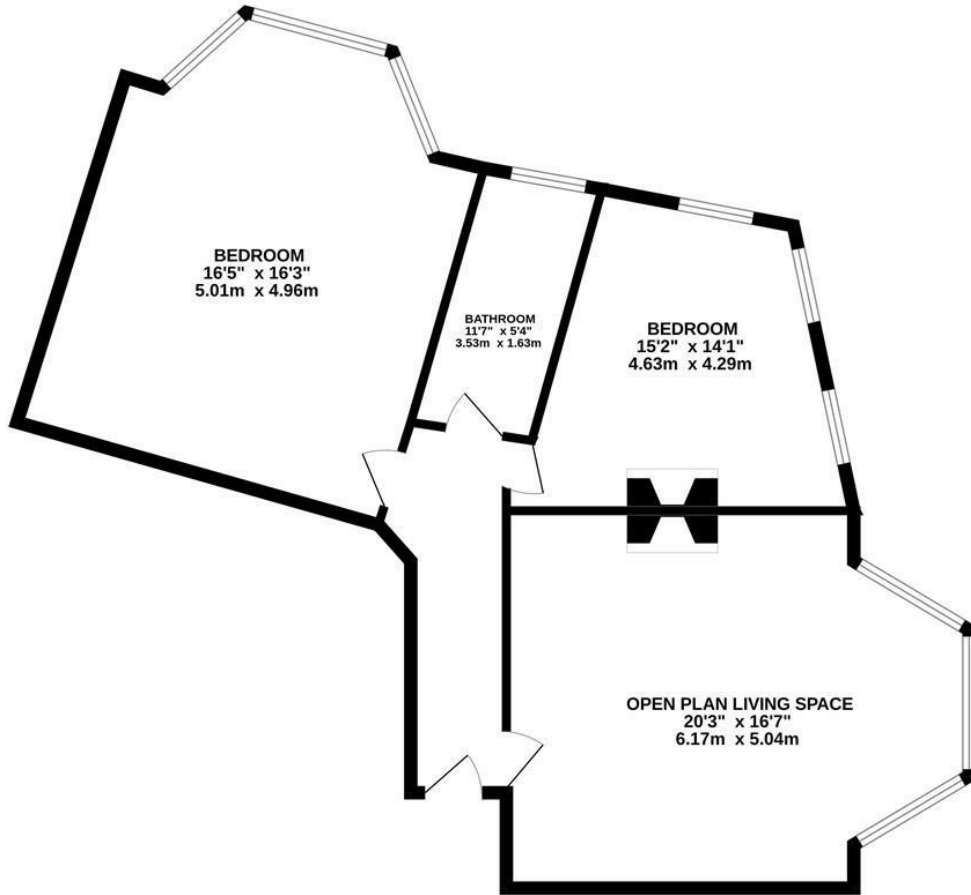
Holmesdale Gardens, Hastings TN34 1LY

Offers in excess of £250,000



A stylish TWO BEDROOM APARTMENT positioned on the FIRST FLOOR of this attractive period residence. It is located in a favoured and central location, just a short stroll from Hastings seafront, the beach and town centre where there are a range of shopping facilities, eateries and a mainline railway station. The accommodation here is deceptively spacious and has a wealth of original features including original bay windows, high ceilings and all rooms benefit from SEA VIEWS. There is an IMPRESSIVE OPEN PLAN LIVING SPACE which enjoys a bay window with SUNNY ASPECT and a MODERN FITTED KITCHEN which offers ample room for a full dining area. The TWO DOUBLE BEDROOMS are positioned at the side of the property together with a family bathroom where there is a bath with shower over. Set in a FAVOURED LOCATION, this fantastic property would make the PERFECT FIRST HOME and is not to be missed.

GROUND FLOOR
875 sq.ft. (81.3 sq.m.) approx.



TOTAL FLOOR AREA: 875 sq.ft. (81.3 sq.m.) approx.

Whilst every attempt has been made to ensure the accuracy of the floorplan contained here, measurements of doors, windows, rooms and any other items are approximate and no responsibility is taken for any error, omission or mis-statement. This plan is for illustrative purposes only and should be used as such by any prospective purchaser. The services, systems and appliances shown have not been tested and no guarantee as to their operability or efficiency can be given.
Made with Metropix ©2025

