

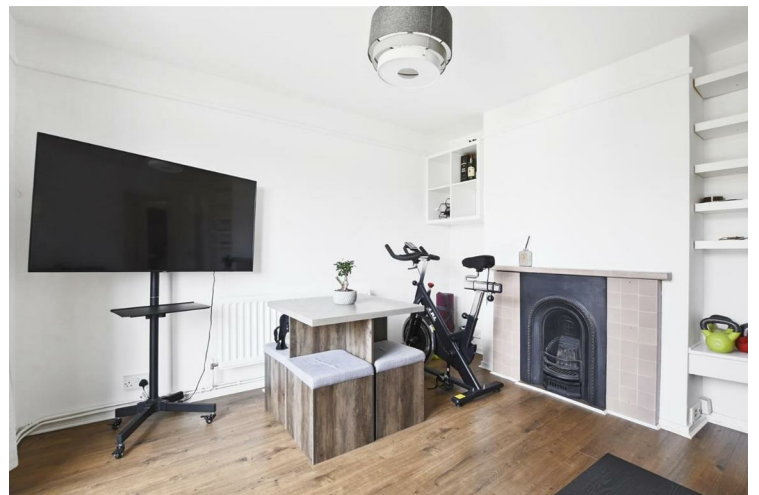


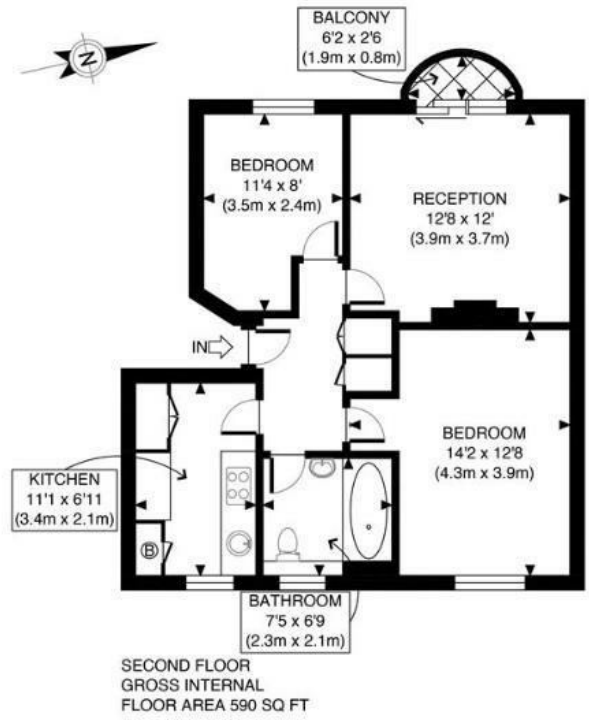
## DOBSON CLOSE LONDON

£2,695 Per Month

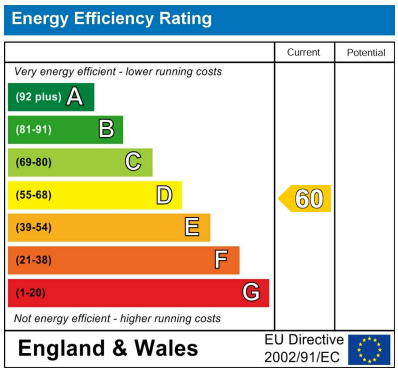
Dobson Close, London - a charming property in the heart of Swiss Cottage. This flat boasts a cosy reception room, perfect for relaxing or entertaining guests. Two bedrooms, there's ample space for a small family, guests, or even a home office and a well-maintained bathroom.

Offering easy access to all the amenities with nearby areas being Swiss Cottage, Belsize Park, St Johns Wood and Hampstead. Built in 1955, this property exudes character while providing modern comfort.





APPROX. GROSS INTERNAL FLOOR AREA 590 SQ FT / 55 SQM	Dobson Close
Disclaimer: Floor plan measurements are approximate and are for illustrative purposes only. While we do not doubt the floor plan accuracy and completeness, you or your advisors should conduct a careful, independent investigation of the property in respect of monetary valuation	date 12/06/24
	photoplan



Agents Note: Whilst every care has been taken to prepare these particulars, they are for guidance purposes only. All measurements are approximate and are for general guidance purposes only and whilst every care has been taken to ensure their accuracy, they should not be relied upon and potential buyers/tenants are advised to recheck the measurements

**London**  
PMP International  
94 Belsize Lane  
Belsize Park  
London  
NW3 5BE

020 7701 2878  
info@pmpi.co.uk  
www.pmpi.co.uk

