



the
ANDERSON
Group exp

Hollett Road, Treboeth, Swansea, SA5 9EY

Offers In Region Of £140,000

 3  1  1



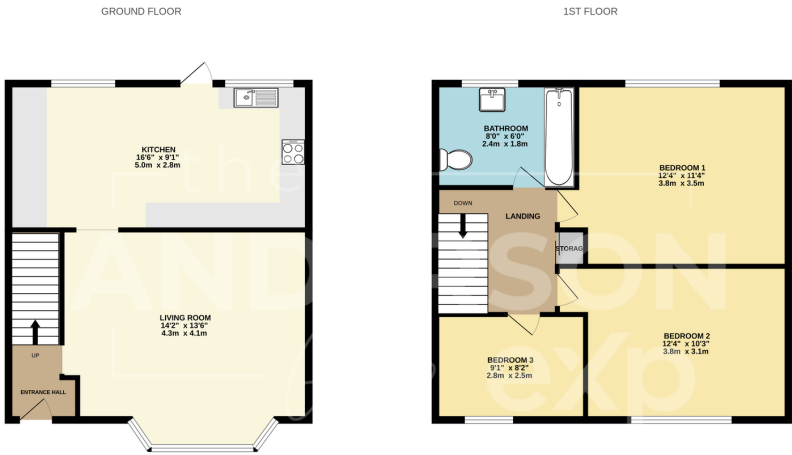
- Elevated Position With Partial Sea Views
- Three Well-Proportioned Bedrooms
- Bright Bay-Fronted Living Room With Feature Chimney Breast
- Modern Kitchen With Contemporary Fitted Units
- First Floor Family Bathroom With Electric Shower Over Bath
- Two Front Bedrooms With Sea Views
- Private, Enclosed And Lightly Tiered Rear Garden
- Rear Lane Access Offering Additional Practicality
- Convenient Access To Swansea City Centre And M4 Corridor
- Ideal Purchase For First-Time Buyers, Families Or Investors



Elevated to provide partial sea views to the front, this attractive three-bedroom home offers bright, well-balanced accommodation in a convenient Swansea location. The bay-fronted living room creates a light and welcoming main reception space, complemented by a modern fitted kitchen designed with everyday practicality in mind.

Upstairs, the property benefits from three spacious bedrooms and a well-appointed family bathroom, providing comfortable accommodation for growing families or first-time buyers alike. To the rear, a private, lightly tiered enclosed garden with rear lane access offers both security and accessibility.

Perfectly positioned for local schools, nearby shops and regular transport links into Swansea City Centre, the property also offers straightforward access to the M4 corridor for



TOTAL FLOOR AREA: 850sq.ft. (79.0 sq.m.) approx.
Whilst every attempt has been made to ensure the accuracy of the floorplan contained here, measurements of doors, windows, rooms and any other items are approximate and no responsibility is taken for any error, omission or mis-statement. This plan is for illustrative purposes only and should be used as such by any prospective purchaser. The services, systems and appliances shown have not been tested and no guarantee as to their operation or efficiency can be given.
Made with Metropix (2024)

