



Herbert Avenue
Poole BH12 4HU
£280,000







Details

**** NO FORWARD CHAIN **** Delightful two bedroom detached bungalow with an additional loft room and cellar offering driveway parking up to 5 cars, tiered south facing rear garden and a single garage.

Property Comprises

Upon entering through the porch, you are welcomed into a spacious hallway leading to all rooms. The well-appointed extended kitchen diner, features patio doors that lead directly to the tiered garden, creating a seamless connection between indoor and outdoor living. A separate lounge that provides access to a cellar which is ideal for additional storage.

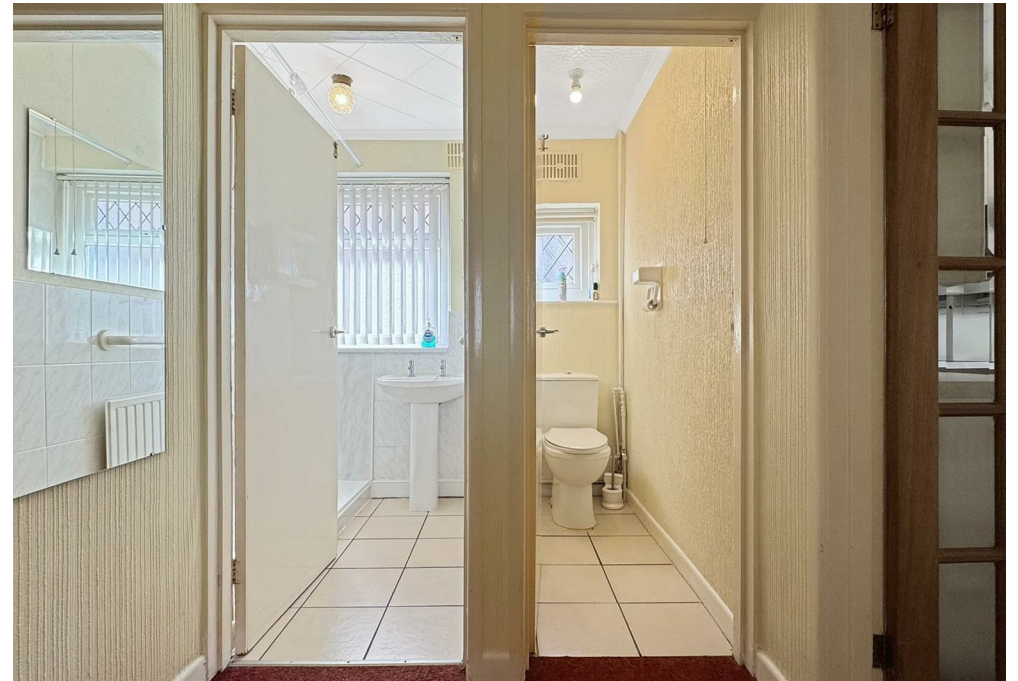
The bungalow boasts a generously sized master bedroom, alongside a single second bedroom, a separate shower room and WC add to the practicality of the layout.

There is a handy storage cupboard with access to the loft room, offering further potential for use as a hobby space or extra storage. Outside, the property is complemented by a driveway that accommodates parking for at least two vehicles, along with a single garage for added convenience.

The tiered south facing garden, complete with a charming pergola, presents an inviting outdoor space.









More Information

- South Facing Garden
 - Two Bedrooms
 - Loft Room
- No Forward Chain
- Extended Kitchen
 - Garage
 - Cellar
- Driveway For Multiple Vehicles

Tenure

Tenure: Freehold

EPC Rating: D

Council Tax: BCP Council, Band C

Davidson Estates

To see our properties before they go on the market please like us on Facebook (Davidson Estates Sales & Lettings), Instagram (davidsonsestates) & YouTube (davidsonsestates)

Copyright

All photos, video, and drone footage are copyrighted by Davidson Estates Sales & Lettings LTD. All rights reserved.

Any redistribution or reproduction of part or all of the contents in any form is prohibited other than the following:

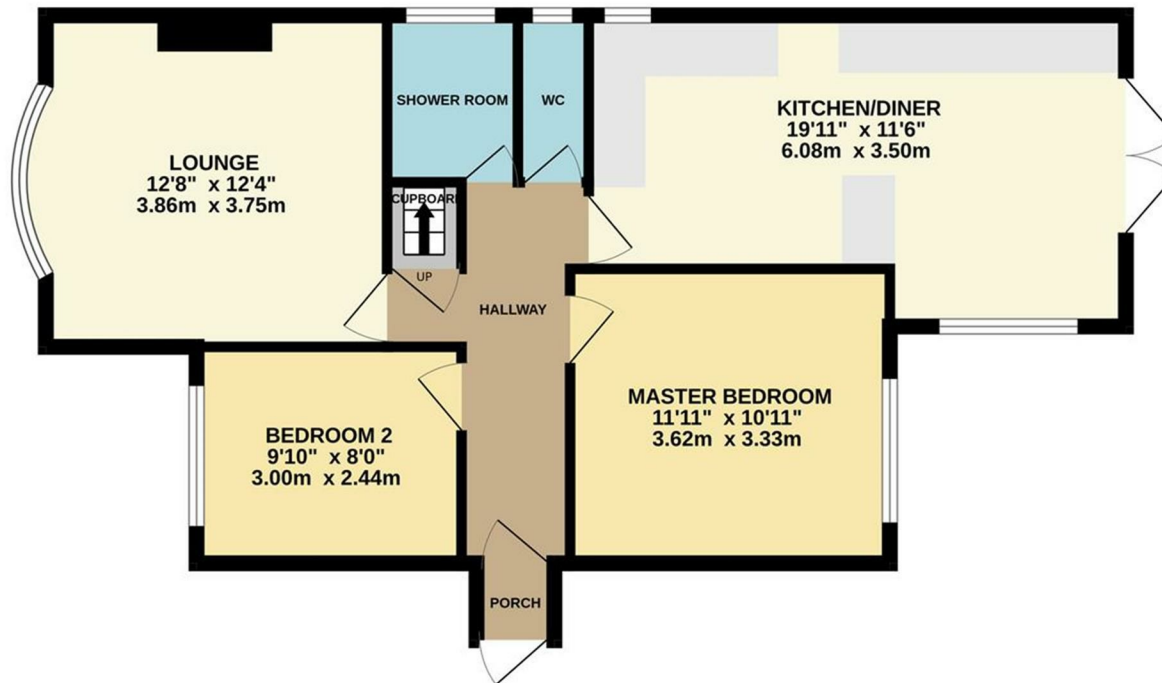
1. You may print or download to local hard disk extracts for your personal and non-commercial use only
2. You may copy the content to individual third parties for their personal use, but only if you acknowledge Davidson Estates as the source of the material

You may not, except with our express written permission, distribute or commercially exploit the content. Nor may you transmit it or store it on any other website or another form of the electronic retrieval system.

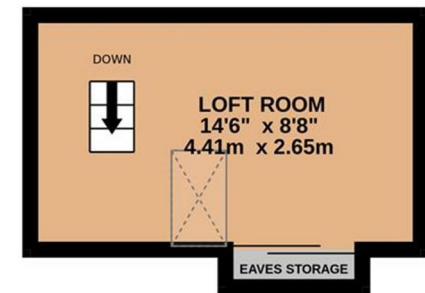


hello@davidsonsestates.com | davidsonsestates.com

GROUND FLOOR
702 sq.ft. (65.2 sq.m.) approx.



1ST FLOOR
133 sq.ft. (12.3 sq.m.) approx.



TOTAL FLOOR AREA : 835 sq.ft. (77.5 sq.m.) approx.

Whilst every attempt has been made to ensure the accuracy of the floorplan contained here, measurements of doors, windows, rooms and any other items are approximate and no responsibility is taken for any error, omission or mis-statement. This plan is for illustrative purposes only and should be used as such by any prospective purchaser. The services, systems and appliances shown have not been tested and no guarantee as to their operability or efficiency can be given.
Made with Metropix ©2025



CONTACT US

Whichever way suits you...

07557 025044 | 07713 870543

hello@davidsonsestates.com

01202 287606

www.davidsonsestates.com

