

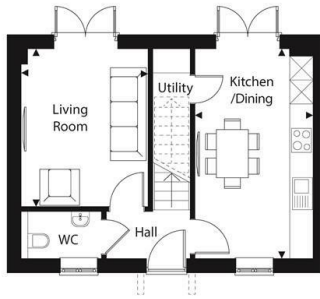


## Plot 77, The Bridport Frenches Green, Upton, Poole, Dorset, BH16

£350,000

- The Bridport
- En-Suite
- Reserve Off Plan!
- Anticipated Completion - December 2026
- Two Bedrooms
- Close To Upton Country Park
- Thoughtfully Designed Layouts
- High Specification Interiors
- A Collection of 2,3 & 4 Bedroom Homes
- New Build Incentives Available!

## The Bridport



Ground Floor

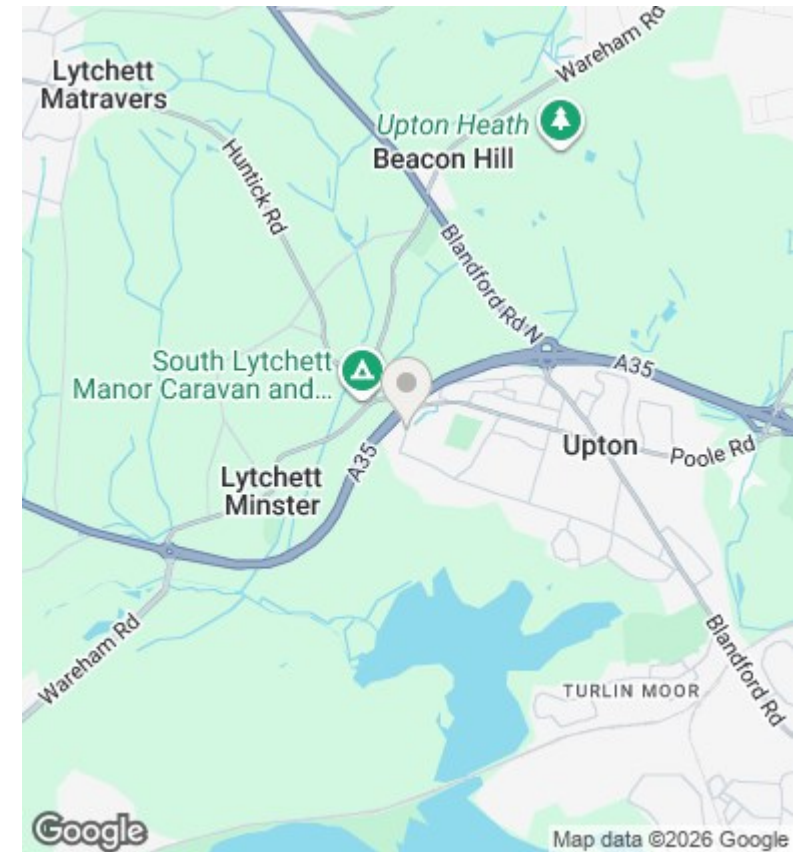
Dining / Kitchen	3.00m x 5.25m	9' 10" x 17' 3"
Living Room	3.16m x 3.93m	10' 4" x 12' 11"

TOTAL FLOOR AREA 77m<sup>2</sup> 830ft<sup>2</sup>



First Floor

Main Bedroom (incl. Wardrobe)	4.20m x 3.32m	13'9" x 10' 10"
Bedroom 2	3.02m x 2.87m	9'11" x 9' 5"



## Directions

## Viewings

Viewings by arrangement only. Call 01202 622101 to make an appointment.

## Council Tax Band

## EPC Rating:

Energy Efficiency Rating		
	Current	Potential
<i>Very energy efficient - lower running costs</i>		
(92 plus) <b>A</b>		
(81-91) <b>B</b>		
(69-80) <b>C</b>		
(55-68) <b>D</b>		
(39-54) <b>E</b>		
(21-38) <b>F</b>		
(1-20) <b>G</b>		
<i>Not energy efficient - higher running costs</i>		
<b>England &amp; Wales</b>	EU Directive 2002/91/EC	