

## Sugden Road, SW11

£650,000

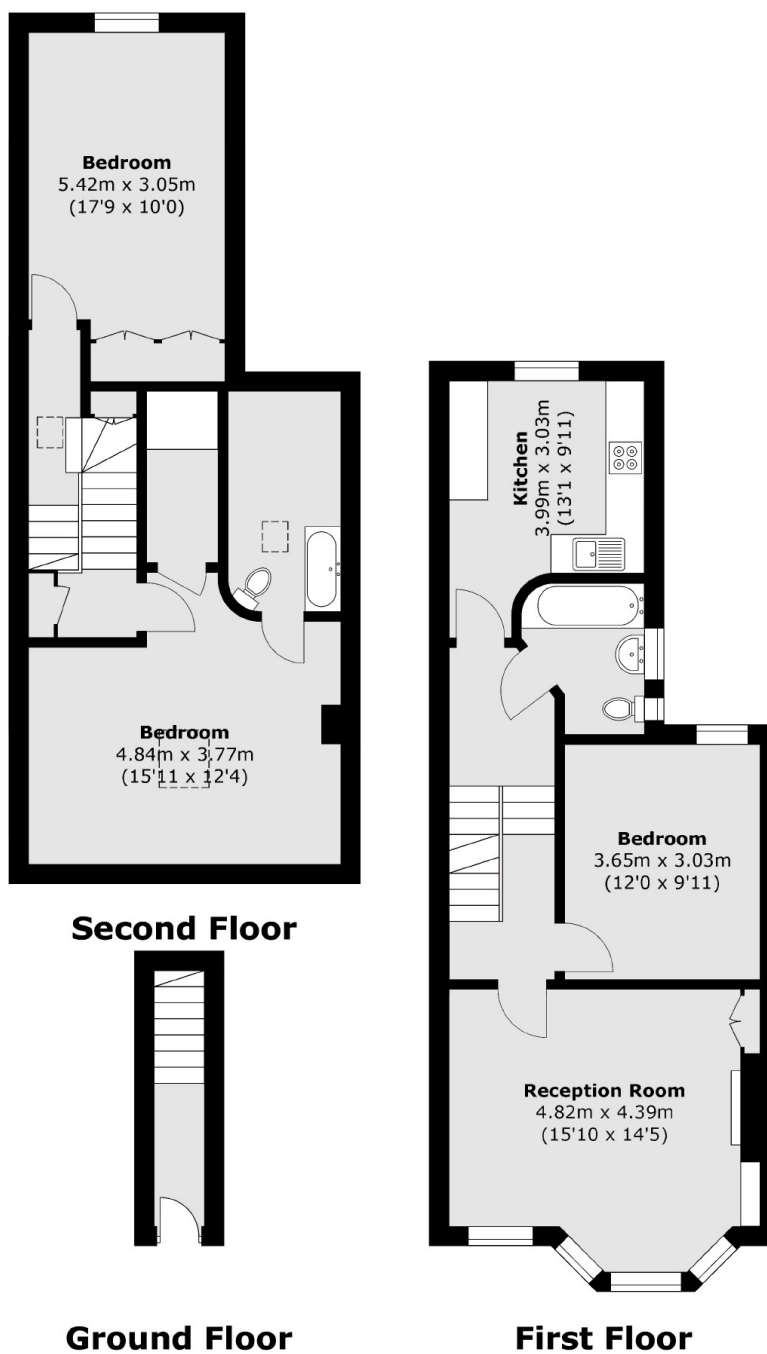
An exceptional three double bedroom Victorian conversion measuring over 1,186 Sq Ft. Comprising a large reception room, separate kitchen, three double bedrooms & two bathrooms (inc en-suite). The property benefits further from owning the entire freehold for the building and is being sold chain free.

Sugden Road is a sought-after residential street off Clapham Common North Side located near some of the area's best schools including Eaton House, Parkgate House and Belleville Wix Academy. Clapham Junction station, Clapham Common Underground & Clapham Common itself are a short stroll away.

### Features

- Victorian Conversion
- Three Double Bedrooms
- Two Bathrooms
- Owns Full Freehold
- Measuring Over 1,186 Sq Ft
- Chain Free

# Sugden Road, London, SW11



Total area (approx.): 110.2 sq. m (1,186.1 sq. ft)