

CARDIFF'S HOME FOR  
STYLISH SALES  
& LETTINGS

JeffreyRoss



R/ O 14-16 RECTORY ROAD  
CANTON



# R/O 14-16 RECTORY ROAD

CANTON, CF5 1QL - £625 PCM

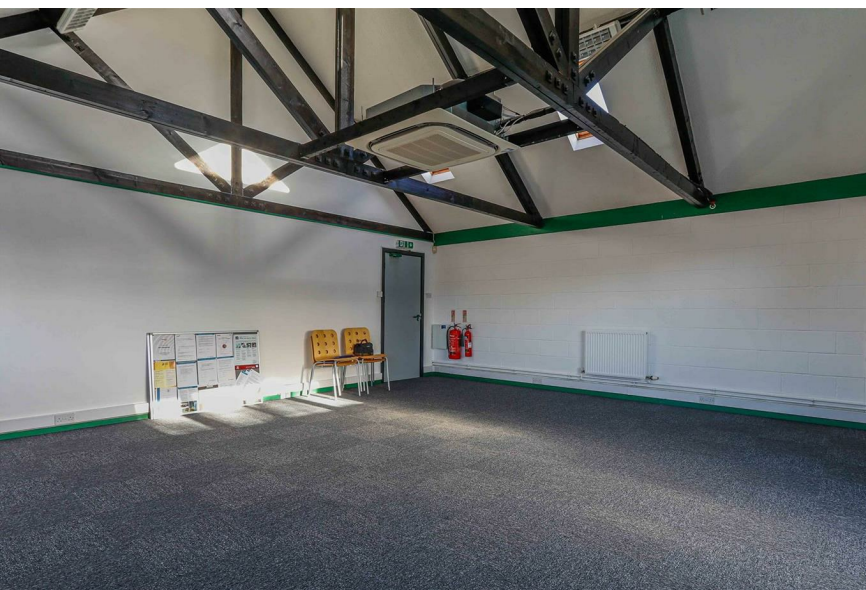
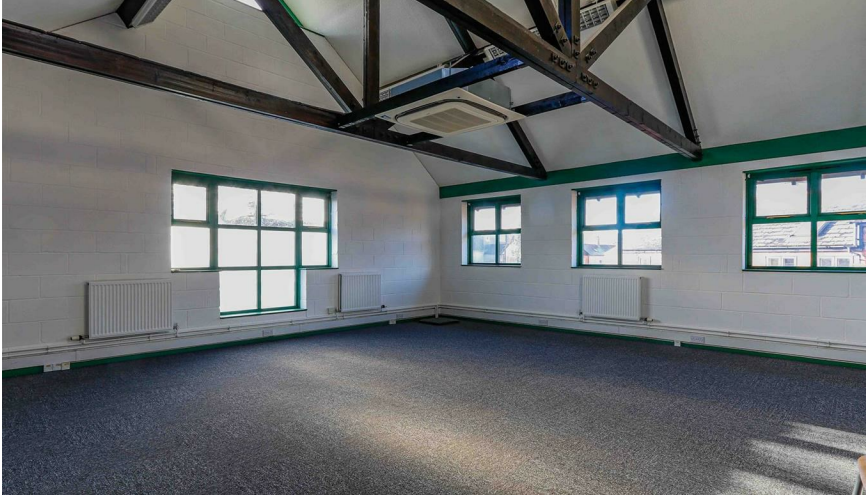
0 bedroom(s) 1 bathroom(s) 492.00 sq ft

In the heart of Canton on Rectory Road and tucked away in a gated development of commercial spaces is this immaculately presented, first-floor office space. The property is a great space (circa 492 square feet) and would be a great option for a range of business types. The property further offers communal kitchen area, WC and off-road parking.

For more information or to arrange a viewing, please call the Pontcanna office on 02920499680.

EPC RATING of C

Administration fees and charges are excluded and this will equate to £295+VAT subject to application..



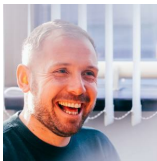
Energy Efficiency Rating		
	Current	Potential
Very energy efficient - lower running costs		
(92 plus) <b>A</b>		
(81-91) <b>B</b>		
(69-80) <b>C</b>		
(55-68) <b>D</b>		
(39-54) <b>E</b>		
(21-38) <b>F</b>		
(1-20) <b>G</b>		
Not energy efficient - higher running costs		
<b>England &amp; Wales</b>	EU Directive 2002/91/EC	

PROPERTY SPECIALIST

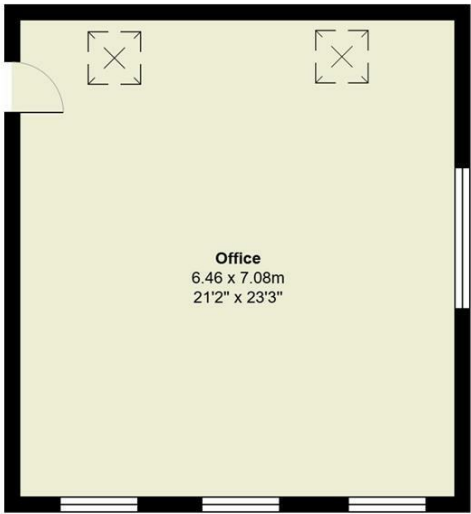
Jon Hooper-Nash

jon@jeffreygross.co.uk

Director



Ty Cefn Offices, Radnor Road, Canton



Total Area: 45.7 m² ... 492 ft²

All measurements are approximate and for display purposes only