



Hawthorn Close, £235,000

- TWO BEDROOMS
- END OF TERRACE
- PRIVATE ENCLOSED GARDEN
- IDEAL FIRST TIME BUY
- PARKING
- OPEN PLAN LIVING AREA
- CONSERVATORY
- EPC Rating: C
- Council Tax: C



 2  1  1



About the property

Immaculate Two-Bedroom End-Terrace Home in Sought-After Bulwark Location.

We are delighted to present this fantastic two-bedroom end-terrace property, offering an excellent opportunity for first-time buyers or a superb addition to any investment portfolio. Tucked away in a quiet cul-de-sac within the ever-popular Hawthorn Close in Bulwark, the home also benefits from superb access to the M4 and major motorway links—ideal for commuters.

Beautifully maintained and ready to move straight into, the accommodation briefly comprises a welcoming entrance hallway leading into a bright and spacious open-plan kitchen and living area, perfectly designed for modern living. The property further benefits from a charming conservatory, providing additional versatile living space and direct access to the rear garden.

To the first floor are two well-proportioned bedrooms along with a contemporary family shower room complete with WC. Externally, the property features an enclosed rear garden with gated access—perfect for outdoor relaxation—along with the added benefit of allocated parking.

This is a wonderful home in a highly convenient location and must be viewed to be fully appreciated.





Accommodation

Entrance Hallway

Kitchen

12' 2" x 9' 2" (3.71m x 2.79m)

Lounge

14' 1" x 12' 2" (4.29m x 3.71m)

Conservatory

12' 2" x 10' 2" (3.71m x 3.10m)

Bedroom 1

12' 2" x 10' 2" (3.71m x 3.10m)

Bedroom 2

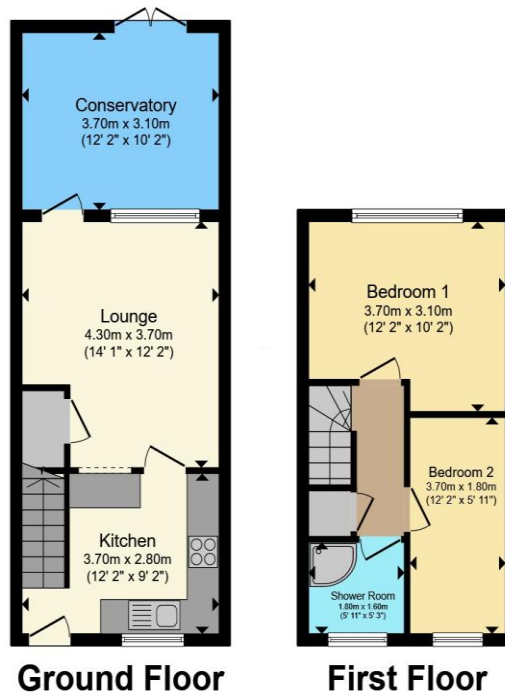
12' 2" x 5' 11" (3.71m x 1.80m)

Shower Room

01291 630876

chepstow@peteralan.co.uk

Floorplan



Total floor area 65.5 m² (705 sq.ft.) approx

This floor plan is for illustrative purposes only. It is not drawn to scale. Any measurements, floor areas (including any total floor area), openings and orientation are approximate. No details are guaranteed, they cannot be relied upon for any purpose and they do not form part of any agreement. No liability is taken for any error, omission or misstatement. A party must rely upon its own inspection(s). Powered by www.propertybox.io

Important Information

Note while we endeavour to make our sales details accurate and reliable, if there is any point which is of particular interest to you, please contact the office and we will be pleased to confirm the position for you. We have not personally tested any apparatus, equipment, fixtures, fittings or services and cannot verify they are in working order or fit for their purposes. Nothing in these particulars is intended to indicate that carpets or curtains, furnishings or fittings, electrical goods (whether wired or not). Gas fires or light fittings or any other fixtures not expressly included form part of the property offered for sale. This computer generated Floorplan, if applicable, is intended as a general guide to the layout and design of the property. It is not to scale and should not be relied upon for dimensions. Tenure: We cannot confirm the tenure of the property as we have not had access to the legal documents. The buyer is advised to obtain verification from their solicitor or surveyor.

Peter Alan Limited is registered in England and Wales under company number 2073153, Registered Office is Cumbria House, 16-20 Hockliffe Street, Leighton Buzzard, Bedfordshire, LU7 1GN. VAT Registration Number is 500 2481 05. For activities relating to regulated mortgages and non-investment insurance contracts, Peter Alan Limited is an appointed representative of Connells Limited which is authorised and regulated by the Financial Conduct Authority. Connells Limited's Financial Services Register number is 302221. Most buy-to-let