



## Carlow Street, NW1

£930,000

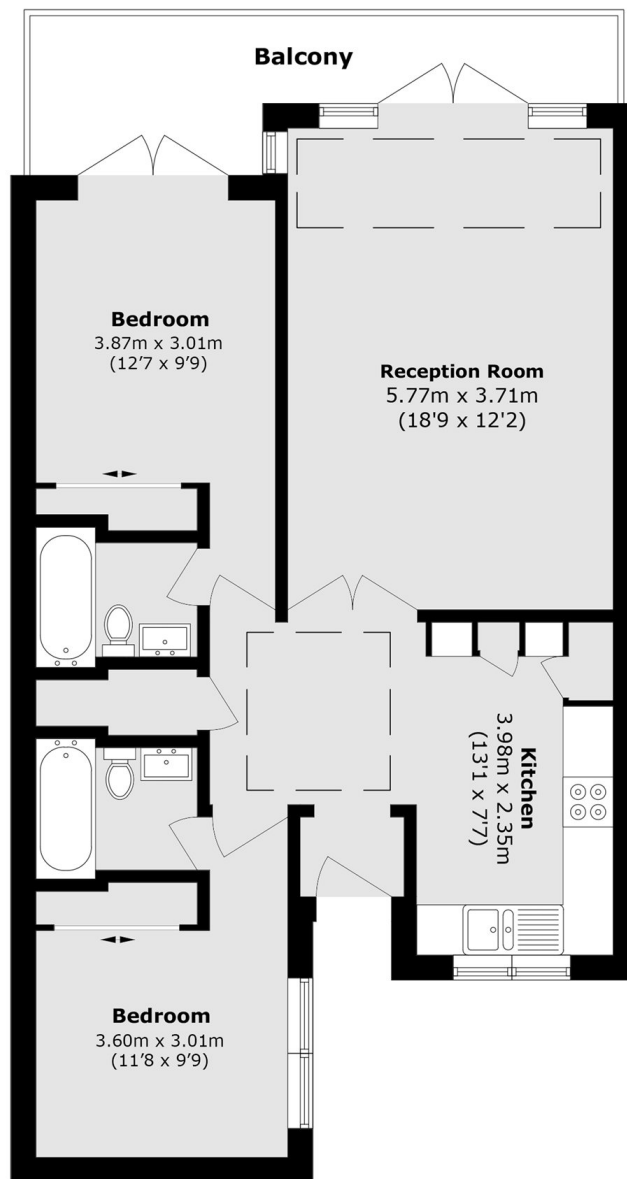
A stunning two double bedroom, two bathroom penthouse in the heart of Camden. The apartment has a lovely living room with doors leading out to a terrace with great views, a separate kitchen and private gated parking.

Located in the heart of Camden Town and within close proximity to Kings Cross and St Pancras, offering numerous transport links on London's underground lines and both National and International rail lines.

### Features

- Two Double Bedrooms
- Two Bathrooms
- Two Terraces
- Concierge Service
- Private Store Room
- Private Gated Parking

# Carlow Street, London, NW1



Total area (approx.): 71.9 sq. m (773.9 sq. ft)

Balcony area (approx.): 9.8 sq. m (105.5 sq. ft)