



## Kingsland Road, E8

### £775,000

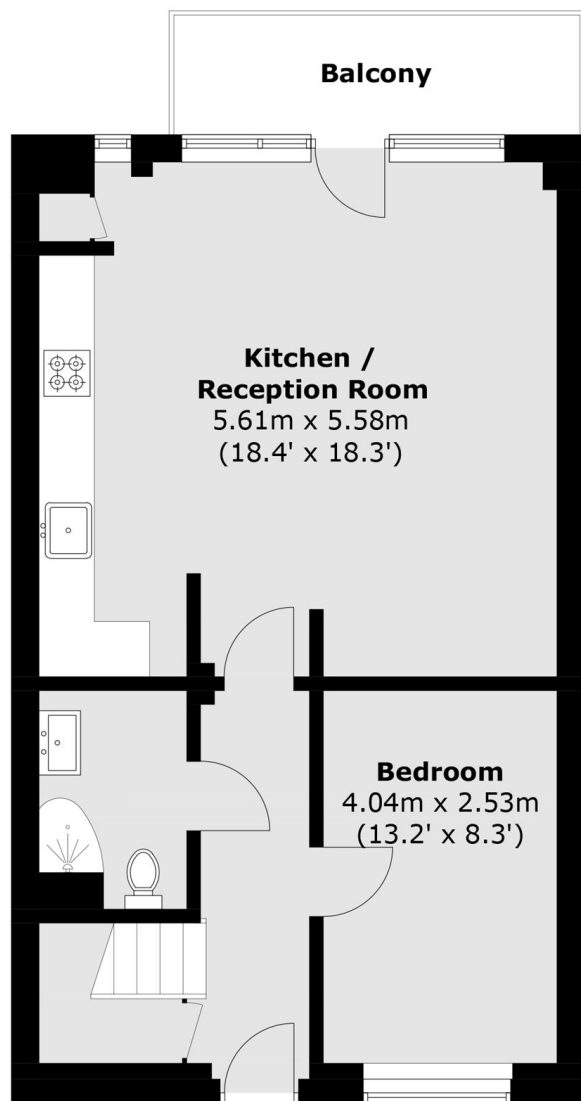
A spacious and contemporary split-level two bed situated in one of East London's most thriving areas. This striking warehouse style home has a private balcony overlooking the water, double height ceilings and floor to ceiling windows.

Kings wharf is a quiet and peaceful gated residence set well back from Kingsland Road and is conveniently located for Haggerston Overground (0.1 miles) and the many bus routes serving Liverpool Street and the City found on Kingsland Road. The extensive selection of shops, bars & restaurants found in Shoreditch (1.1 miles), Dalston (0.5 miles) and Haggerston are also within easy reach.

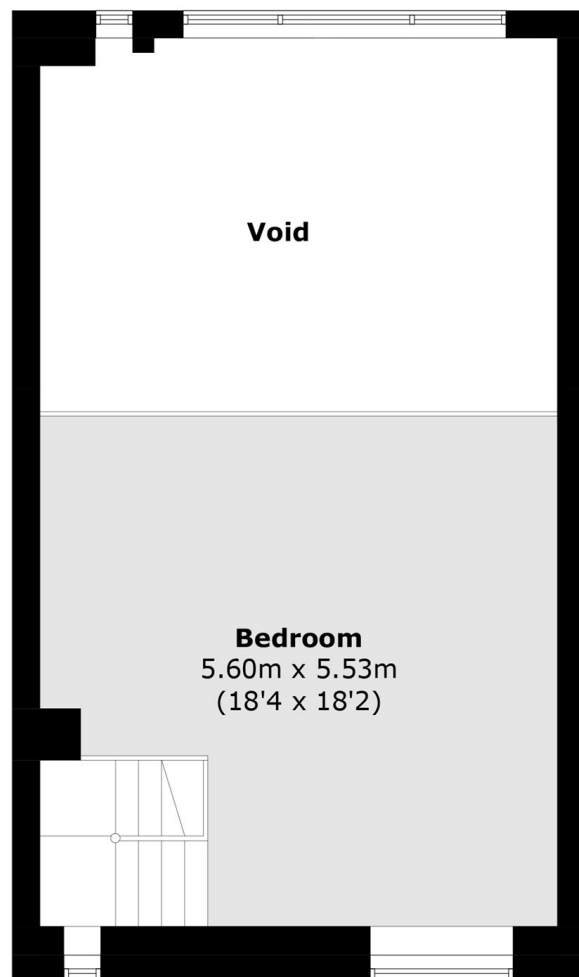
### Features

- Double height ceiling
- Water Facing Aspect
- Gated Development
- Lift Access
- Private Balcony

# Kingsland Road, London, E8



## Second Floor



## Mezzanine

Total area (approx.): 88.7 sq. m (955.0 sq. ft)  
Balcony Area: 5.7 sq. m (61.3 sq. ft)  
(Excluding Void)