
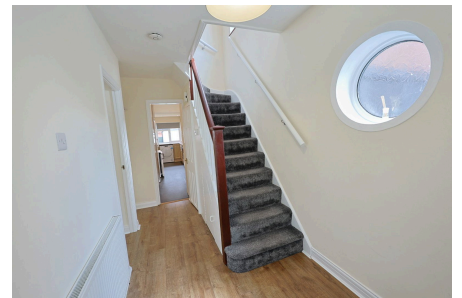


Methuen Road, Edgware, HA8 6EX

Coming Soon £625,000

 3  1  1



A *Chain Free* Extended Three Bedroom Semi Detached Family Home, in this desirable Edgware location close to local schooling and amenities.

Accommodation comprises a large through lounge, a large open plan kitchen-diner, Three Bedrooms, and a family bathroom.

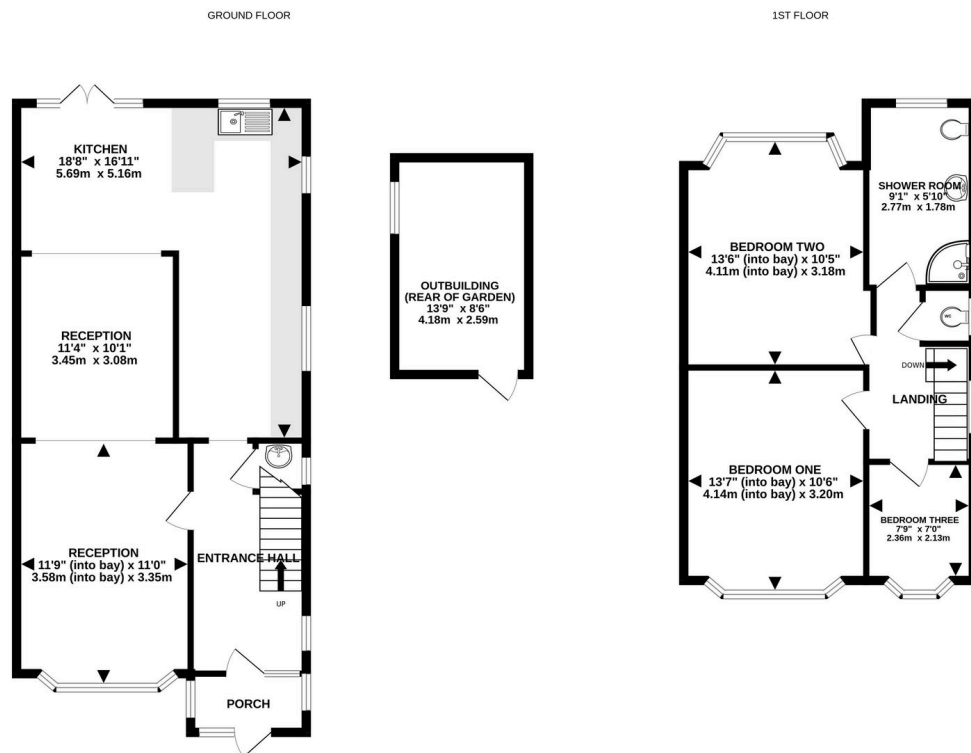
Features include ample off-street parking, a private garden, and a useful outhouse.

With the potential to extend further S.T.P.P.

An early viewing is highly recommended via the vendor's agent Benjamin Stevens. Call now to view!

Key Features

- *Chain Free*
- Semi Detached
- Large Kitchen
- Sole Agent
- Private Garden
- Three Bedroom
- Extended
- Ample off street parking
- Large outbuilding at rear of garden.
- Close to local schooling and amenities.



Whilst every attempt has been made to ensure the accuracy of the floorplan contained here, measurements of doors, windows, rooms and any other items are approximate and no responsibility is taken for any error, omission or mis-statement. This plan is for illustrative purposes only and should be used as such by any prospective purchaser. The services, systems and appliances shown have not been tested and no guarantee as to their operability or efficiency can be given.
Made with Metropix ©2025