

## Humphry House, SW15

Approx. gross internal area 793 Sq Ft. / 73.7 Sq M

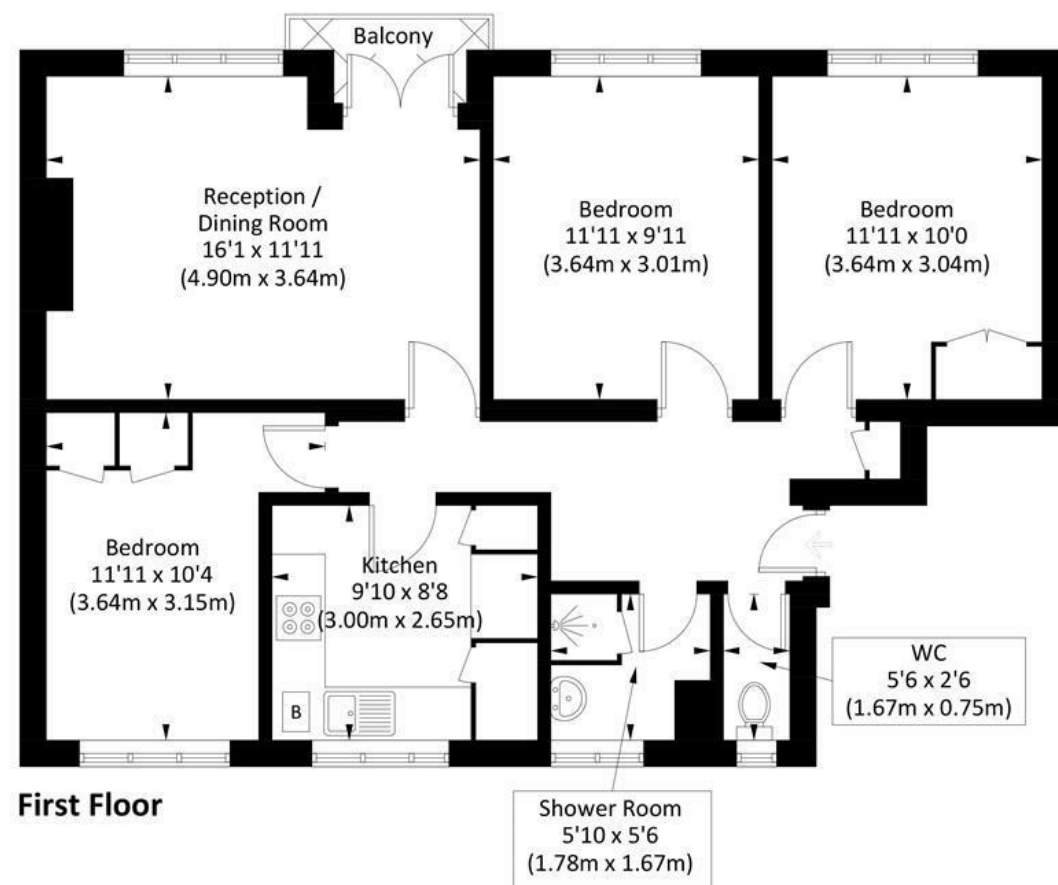


Illustration for identification purposes only, measurements are approximate, not to scale. Fourlabs.co © 2026 (ID1265910)

**DISCLAIMER**•These particulars are intended to give a fair and substantially correct overall description for the guidance of intending purchasers and do not constitute an offer or part of a contract. Prospective purchasers and/or lessees ought to seek their own professional advice.

•All descriptions, dimensions, areas, references to condition and necessary permissions for use and occupation and other details are given in good faith and are believed to be correct, but any intending purchasers should not rely on them as statements or representations of fact, but must satisfy themselves by inspection or otherwise as to the correctness of each of them.  
•All measurements are approximate.



## Whitnell Way, London, SW15

A superb three double bedroom flat on the first floor of this popular development in Upper West Putney. Offered on a furnished or unfurnished basis and benefiting from a private balcony overlooking the well maintained communal gardens, the accommodation comprises an entrance hallway, bright reception room with access to the balcony, brand new kitchen, three double bedrooms, a shower room and separate WC. Whitnell Way is ideally located within walking distance of Putney High Street and East Putney underground. Available now.



- THREE DOUBLE BEDROOM FLAT
- BRAND NEW KITCHEN
- SHOWER ROOM
- PRIVATE BALCONY
- EPC C
- RECEPTION ROOM
- THREE DOUBLE BEDROOMS
- SEPARATE WC
- GREAT LOCATION
- COUNCIL TAX BAND C

Per Month  
**£2,250 Per Month**



