



Seymour Road  
Chatham | ME5 7AE



Spacious five Bedroom Property Available for Company Let

CR Real Estate are delighted to offer this spacious and versatile property on Seymour Road, Chatham, available immediately and ideally suited to company lets.

Offering generous accommodation arranged over three floors, the property comprises four well-proportioned bedrooms, a separate office/study room and a converted loft space providing an additional room which can be utilised to suit your company's requirements. The property also benefits from a modern fitted kitchen, spacious living accommodation, and a low-maintenance rear garden.

This property would make an excellent base for businesses requiring staff accommodation, relocation housing, contractor accommodation or supported living providers, subject to suitability and agreement.

Conveniently located within easy reach of Chatham town centre, Medway Maritime Hospital, local amenities, transport links and motorway connections, the property offers excellent access throughout the Medway Towns and surrounding areas.

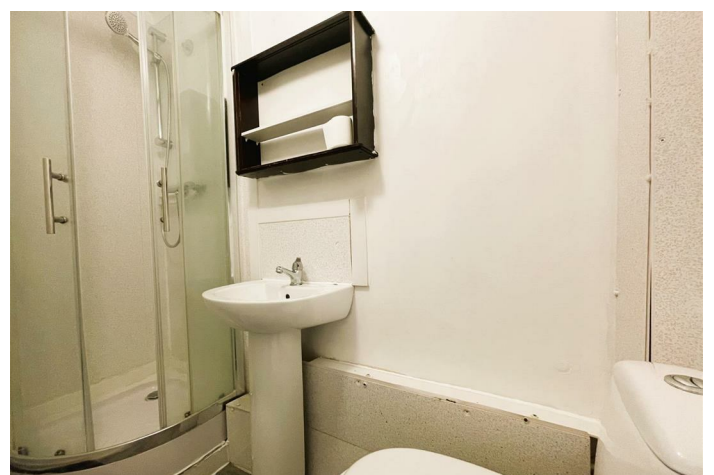
Available Now.

Please contact CR Real Estate to discuss your company's requirements and arrange a viewing.

**£2,750 Per Calendar Month**



- SUITABLE FOR COMPANY LETS
- AVAILABLE IMMEDIATELY
- FIVE BEDROOMS
- CONVERTED LOFT ROOM
- MODERN THROUGHOUT
- EXCELLENT ACCESS TO CHATHAM TOWN
- REAR COURTYARD
- COUNCIL TAX BAND B
- EPC RATING D
- COMPANY SETUP FEE £360







18 - 20 High Street  
 Gillingham  
 Kent  
 ME7 1BB

01634 570057

www.crealestate.co.uk  
 twitter.com/CRRealEstateUK  
 facebook.com/CRRealEstateUK



Energy Efficiency Rating		Current	Potential
(92 plus)	A		
(81-91)	B		
(69-80)	C		
(55-68)	D		
(39-54)	E		
(21-38)	F		
(1-20)	G		
Not energy efficient - higher running costs			
England & Wales		EU Directive 2002/91/EC	

Environmental Impact (CO <sub>2</sub> ) Rating		Current	Potential
(92 plus)	A		
(81-91)	B		
(69-80)	C		
(55-68)	D		
(39-54)	E		
(21-38)	F		
(1-20)	G		
Not environmentally friendly - higher CO <sub>2</sub> emissions			
England & Wales		EU Directive 2002/91/EC	

CR Real Estate endeavour to maintain accurate depictions of properties in Virtual Tours, Floor Plans and descriptions, however, these are intended only as a guide and purchasers must satisfy themselves by personal inspection.

