



## 47 Telekebir Road, Pontypridd, CF37 2RL

**£175,000**

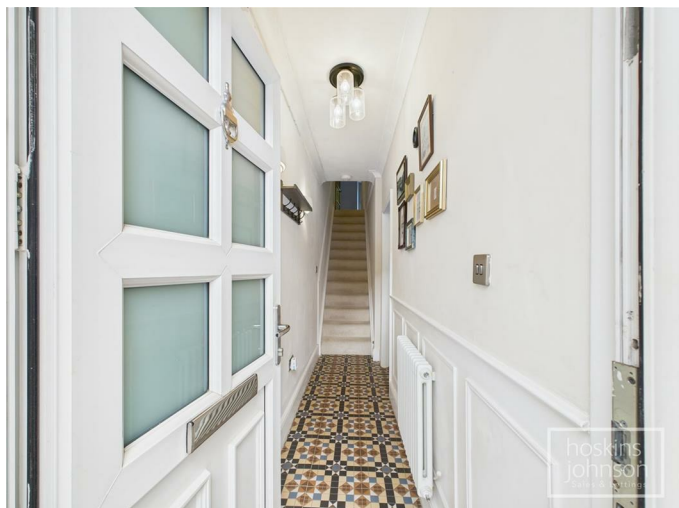
Located on Telekebir Road in Hopkinstown, Pontypridd, this well-presented mid-terrace house offers a delightful blend of comfort and modern living. With four spacious bedrooms, this property is perfect for families or those seeking extra space.

Upon entering, you are welcomed by three inviting reception rooms, including a cosy lounge featuring a charming log burner, ideal for those chilly evenings. The dining room provides a perfect setting for family meals or entertaining guests. The contemporary kitchen is equipped with a modern oven & hob, making it a joy to prepare meals and gather with loved ones.

The property boasts a stylish bathroom, complete with a free-standing bath and a large walk-in shower, offering a luxurious retreat for relaxation.

Conveniently located, this home is just a stone's throw away from local shops, schools, and the town centre, ensuring that all your daily needs are easily met. This property is not just a house; it is a wonderful place to call home, combining modern amenities with a prime location. Don't miss the opportunity to make this lovely property your own.

## Entrance



Half glazed entrance door.

## Hallway



Radiator, coved ceiling, tiled floor, staircase to first floor.

## Lounge



Double glazed window to front, radiator, coved ceiling, laminated wood flooring, brick fireplace with log burner, open plan to dining room.

## Dining Room



Radiator, coved ceiling, laminated wood flooring, understairs storage cupboard.

## Breakfast Room



Double glazed french doors leading out to garden, radiator, ceiling spotlights, laminated wood flooring, breakfast bar.

## Kitchen



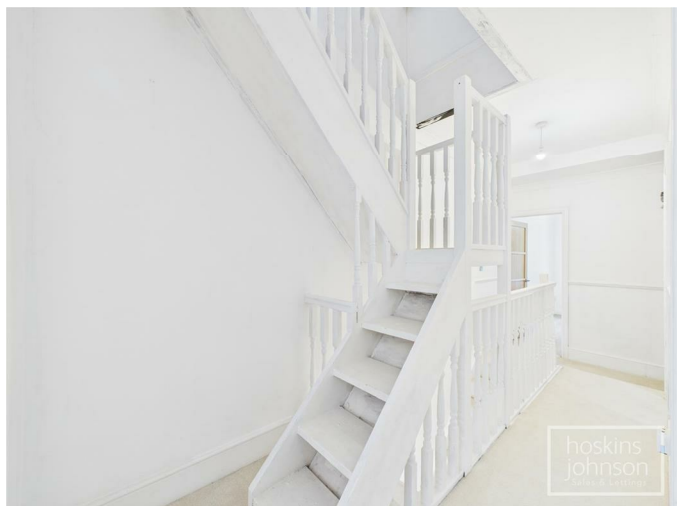
Modern kitchen with white gloss base and wall cupboards, stainless steel sink unit, ceramic hob with extractor hood above, electric double oven, space for washing machine and fridge/freezer, tiled floor, radiator, ceiling spotlights, half glazed door to side.

## Bathroom



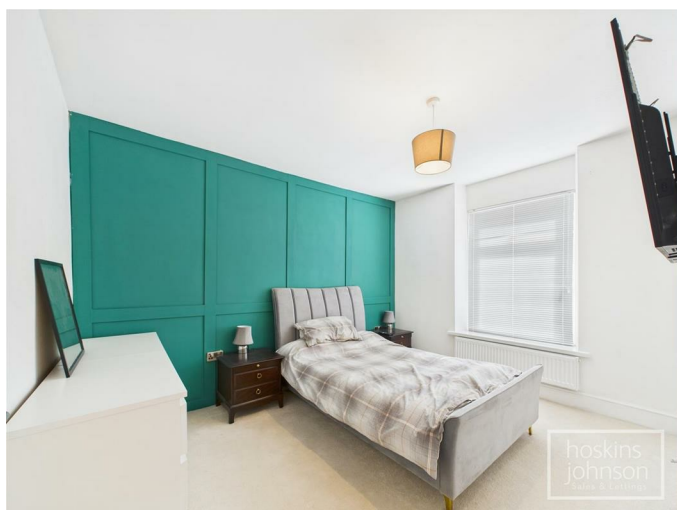
Modern bathroom suite in white and comprising free standing bath, wc, wash hand basin, large walk in tiled shower with overhead, rainfall shower and hand held attachment, part tiled walls, tiled floor, vertical radiator, ceiling spotlights, double glazed window to rear.

First Floor Landing



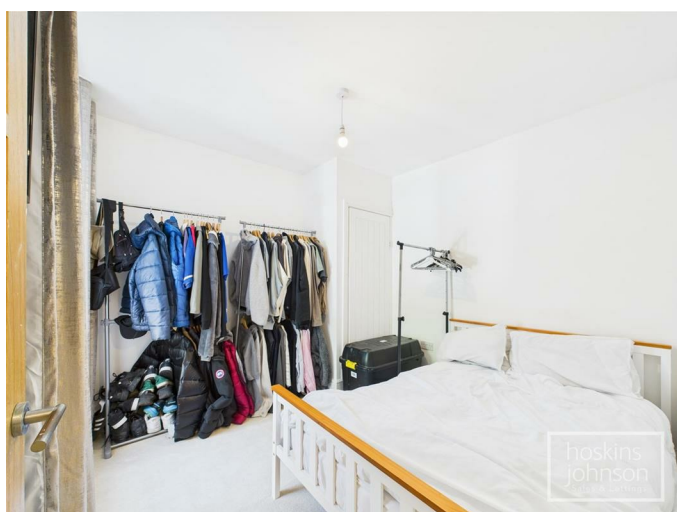
Storage cupboard, Staircase to attic room.

Bedroom 1



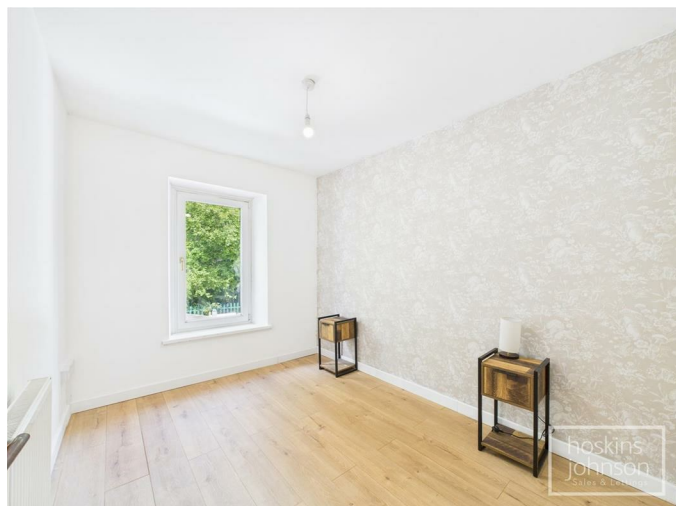
Double glazed window to front, radiator, feature panelled wall.

Bedroom 2



Double glazed window to rear, radiator, storage cupboard with wall mounted gas combination boiler.

Bedroom 3



Double glazed window to rear, radiator, laminated wood flooring.

Bedroom 4



Double glazed window to front, radiator.

Attic Room



A useful space with boarded floor and skylight.

Outside

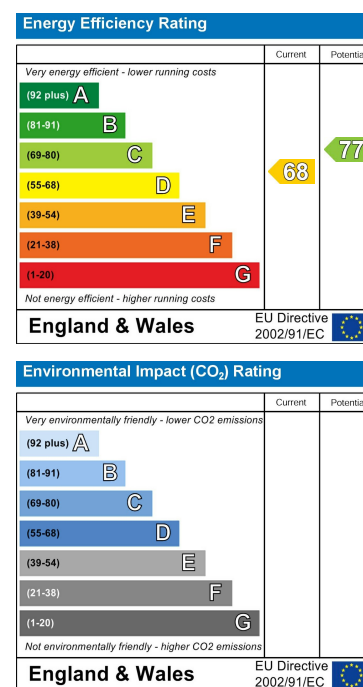
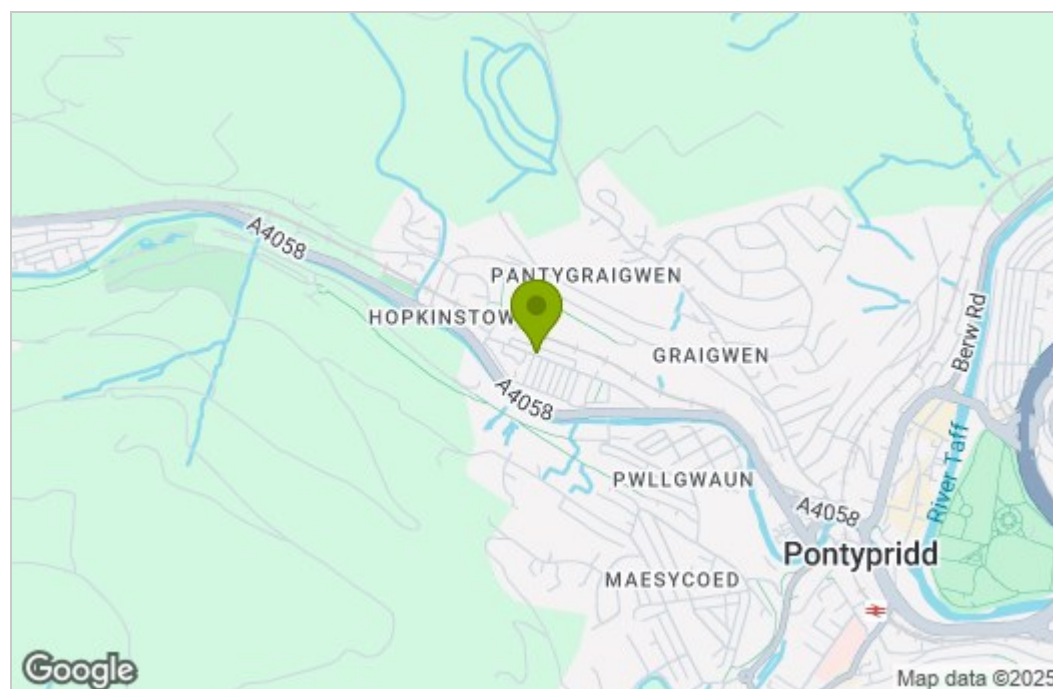


Gravelled and decked seating areas with artificial grass and lane access.

## Floor Plan



## Area Map



These particulars, whilst believed to be accurate are set out as a general outline only for guidance and do not constitute any part of an offer or contract. Intending purchasers should not rely on them as statements of representation of fact, but must satisfy themselves by inspection or otherwise as to their accuracy. No person in this firm's employment has the authority to make or give any representation or warranty in respect of the property.

22 Market Street, Pontypridd, CF37 2ST

Tel: 01443 404093 Email: [pontypridd@hoskinsjohnson.co.uk](mailto:pontypridd@hoskinsjohnson.co.uk) [www.hoskinsjohnson.co.uk](http://www.hoskinsjohnson.co.uk)