



RESIDENCE AT MONTPELIER 20 NORFOLK TERRACE BRIGHTON, BN1 3LZ

SHARE OF FREEHOLD

Guide Price £550,000 - £565,000. Welcome to Montpelier Place: a stunning two bedroom apartment set in the Clifton Hill and Montpelier Conservation Area.

Built in 2019 this two bedroom high spec apartment is located on the second floor of the eastern wing of Montpelier Place. The apartment benefits from a great layout, well proportioned rooms and high ceilings all combining to make a fantastic flat.

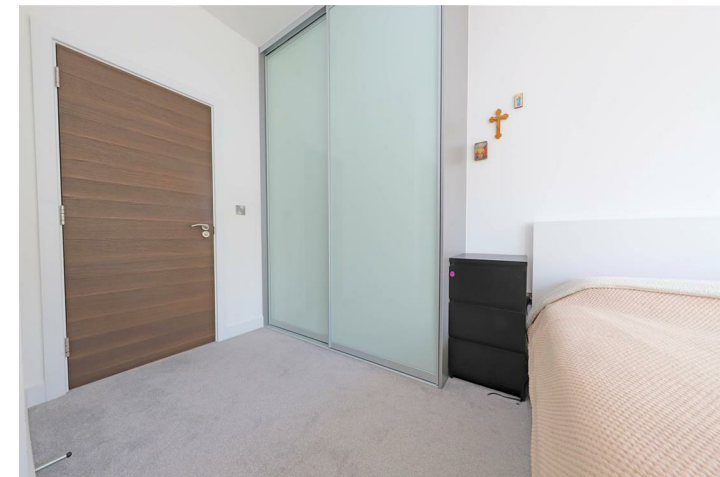
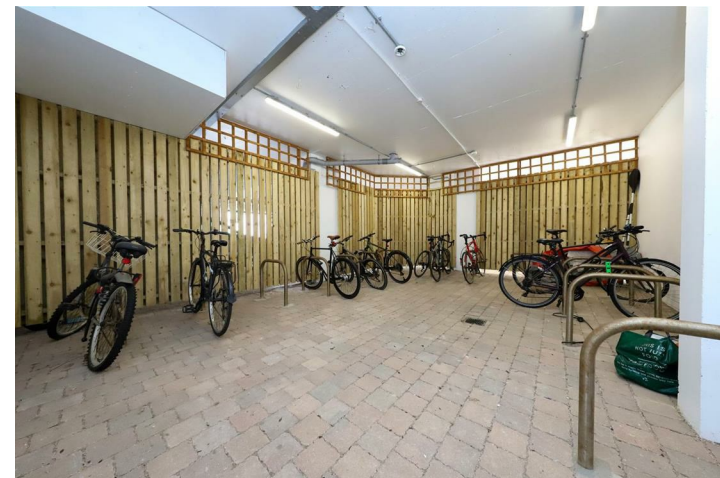
The property comprises; open plan kitchen, living space with engineered oak flooring and subtle contemporary wall colours, the integrated appliances are Bosch and during the summer you can dine outside on the porcelain tiled balcony which is accessible via full-height glazed doors. There are two double bedrooms both with built-in wardrobes, with the main bedroom also benefitting from en-suite access. There is a modern family bathroom and plenty of built in storage space in the hallway. The apartment further benefits from;

Advanced Ventilation System (MVHR): The property features an ultra-quiet, energy-efficient, low-depth central extract system. This ensures continuous fresh filtered air, prevents any mould issues, operates ultra-quietly, and leads to lower heating bills.

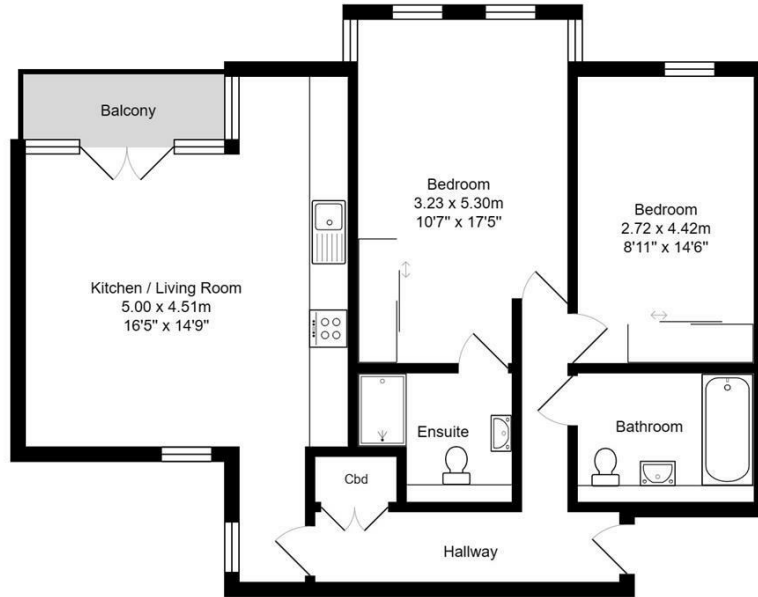
Smart Home Heating: The heating system is fully integrated and can be controlled via a mobile app from anywhere, offering great convenience and energy management.

Nicholas
James

SALES LETTINGS AUCTIONS







Apartment 7, Residence At Montpelier, 20, Norfolk Terrace, Brighton, BN1 3LZ

Total Area: 80.1 m² ... 862 ft²

All measurements are approximate and for display purposes only.



Energy Efficiency Rating		
	Current	Potential
Very energy efficient - lower running costs		
(92 plus) A		
(81-91) B	88	88
(69-80) C		
(55-68) D		
(39-54) E		
(21-38) F		
(1-20) G		
Not energy efficient - higher running costs		
England & Wales	EU Directive 2002/91/EC	

Agents Note: Whilst every care has been taken to prepare these particulars, they are for guidance purposes only. All measurements are approximate and are for general guidance purposes only and whilst every care has been taken to ensure their accuracy, they should not be relied upon and potential buyers/tenants are advised to recheck the measurements

Hove Lettings
Ground Floor 8 The Drive
Hove
East Sussex
BN3 3JA

01273 917915
hello@nicholasjamesproperty.co.uk
www.nicholasjamesproperty.co.uk

**Nicholas
James**

SALES LETTINGS AUCTIONS