



**Great Ormond Street, WC1N**

**£1,000,000**

**Dexters**



## Great Ormond Street, WC1N

A beautifully proportioned, two double bedroom home within a Grade II listed Georgian conversion. The property maintains original features as well as high ceilings and has direct access to a bright, communal garden at the rear.

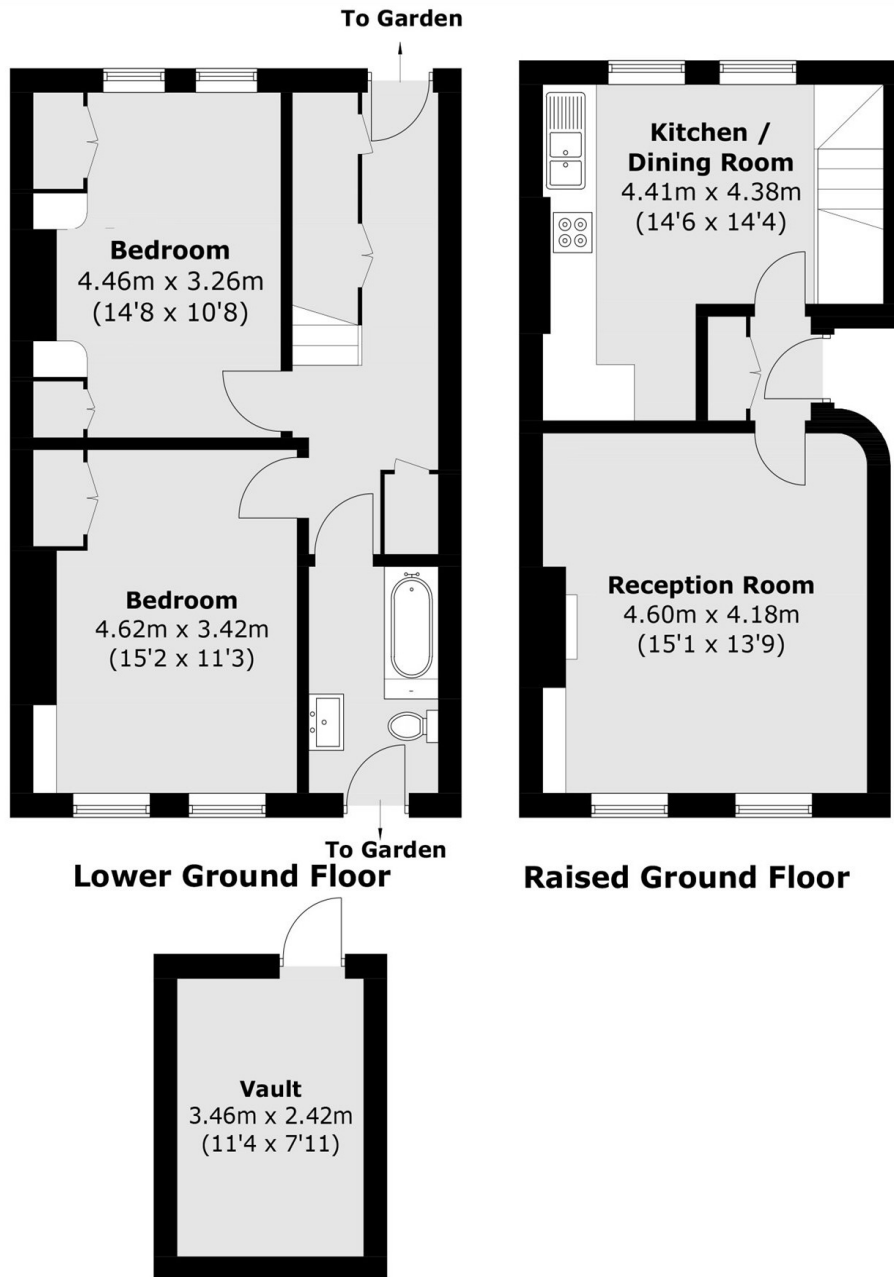
Situated on a tree lined street in one of Bloomsbury's best locations, just off Lamb's Conduit Street and close to an array of independent shops and restaurants.

### Features

- Two Double Bedrooms
- Sought After Location
- Grade II Listed
- High Ceilings
- Split Level
- Garden Access



# Great Ormond Street, London, WC1N



**(Not Shown In Actual  
Location / Orientation)**

Total area (approx.): 86.6 sq. m (932.2 sq. ft)

Vault : 8.5 sq. m (91 sq. ft)