



Hans Place, London SW1X

Asking Price £1,900,000, Leasehold

NAPIER WATT

T: 0207 935 0011
E: enquiries@napierwatt.co.uk
W: napierwatt.co.uk

35 Berkeley Square, Mayfair, London, W1J 5BF







Description

Set within the prestigious surroundings of Hans Place in the heart of Belgravia, this elegant two-bedroom maisonette offers an exceptional opportunity to acquire a beautifully proportioned home in one of London's most sought-after garden squares.

Arranged over two floors, the apartment combines generous living accommodation with a practical layout. The bright and spacious reception room provides an ideal setting for both relaxing and entertaining, while the well-appointed kitchen offers ample storage and workspace. Two well-proportioned double bedrooms are complemented by contemporary bathroom facilities, creating a comfortable and stylish home.

A private balcony extends the living space outdoors, providing a pleasant spot to enjoy morning coffee or unwind overlooking the surrounding neighbourhood.

Hans Place is renowned for its elegant period architecture, exclusive atmosphere, and prime Belgravia location. Residents benefit from

Key Features

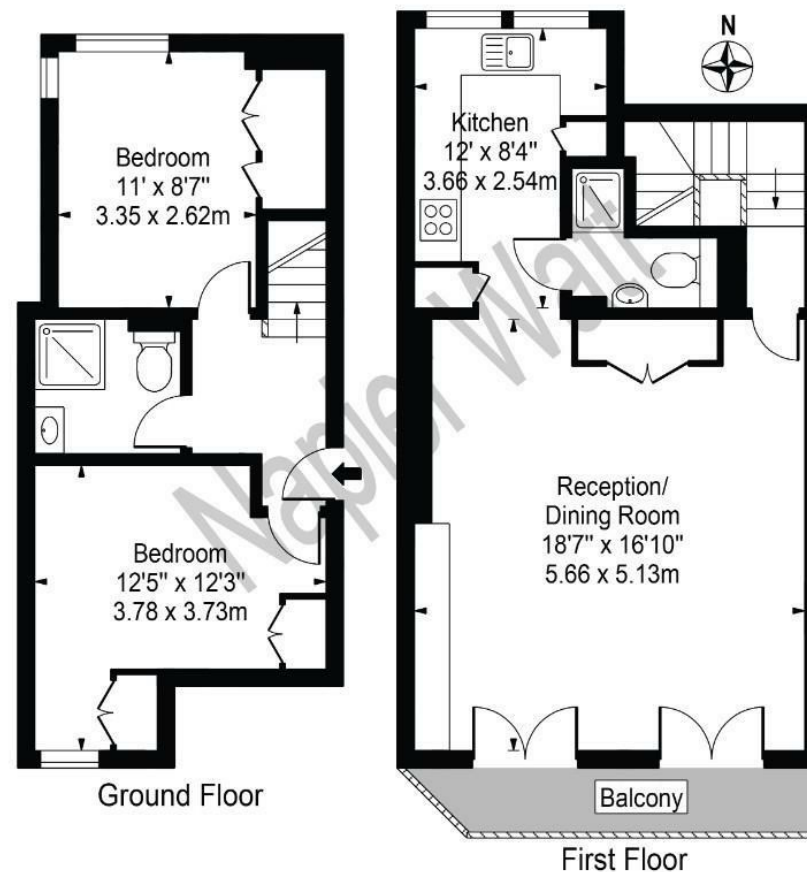
- EXCELLENT CEILING HEIGHT
- BALCONY
- PRIME LOCATION

Terms

Leasehold: 108 Years Remaining.

Hans Place

Approx. Gross Internal Area 810 Sq Ft - 75.25 Sq M



For Illustration Purposes Only - Not To Scale

This floor plan should be used as a general outline for guidance only and does not constitute in whole or in part an offer or contract. Any intending purchaser or lessee should satisfy themselves by inspection, searches, enquiries and full survey as to the correctness of each statement. Any areas, measurements or distances quoted are approximate and should not be used to value a property or be the basis of any sale or let.

IMPORTANT: We would inform prospective purchasers that these sales particulars have been prepared as a general guide only. A detailed survey has not been carried out, nor the services, appliances and fittings tested. Room sizes should not be relied upon for furnishing purposes and are approximate. If floor plans are included, they are for guidance only and illustration purposes only and may not be to scale. If there are any important matters likely to affect your decision to buy, please contact us before viewing the property.