



Wickham Road, SE4

£350,000

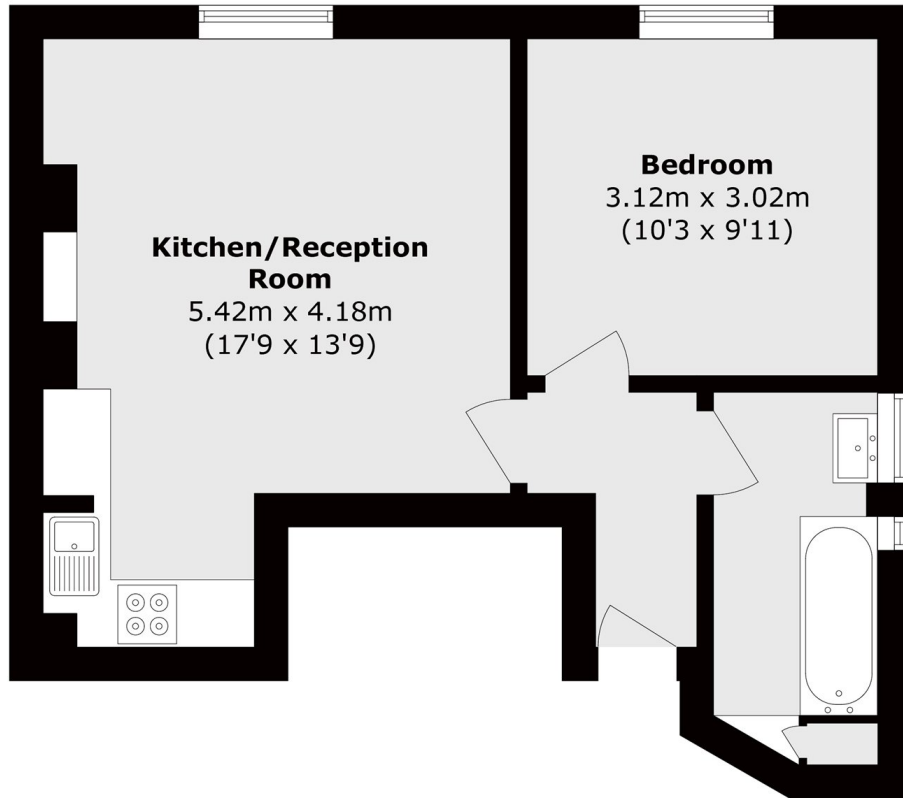
A beautifully presented share-of-freehold apartment occupying the ground floor of an elegant Victorian townhouse, ideally situated within the highly sought-after Brockley Conservation Area. This charming home combines period character with tasteful modern finishes, offering well-proportioned living space and a warm, inviting atmosphere throughout.

Perfectly positioned for easy access to a choice of stations, as well as the ever-popular, award-winning Brockley Farmers' Market, renowned for its vibrant atmosphere and excellent selection of local produce.

Features

- One Bedroom
- Share Of Freehold
- Period Features
- Communal Garden
- Close To Transport Links

Wickham Road, London, SE4



Total area (approx.): 37.4 sq. m (402.5 sq. ft)