



Stryd Y Maswr, offers over £180,000

- Sought After Location
- Close to M4
- Scenic Walks Near
- Semi Detached
- Three Bedrooms
- Space For Two Cars
- EPC Rating: B



 3  2  1



About the property

Nestled in the sought-after area of Llanelli SA15, this modern 3-bedroom semi-detached house offers the perfect blend of comfort and convenience. Ready to move straight into, this property boasts a fresh, contemporary feel, ideal for first-time buyers eager to step onto the property ladder.

The home features a well-designed layout with a spacious living area, perfect for relaxing and entertaining. Upstairs, you'll find three comfortable bedrooms, providing ample space for a growing family or those needing a home office. The property also benefits from a low-maintenance garden, offering a private outdoor space to enjoy.

Located in a desirable neighbourhood, you'll have easy access to local amenities, schools, and transport links. This delightful home is an excellent opportunity for first-time buyers seeking a stylish and convenient living space in a prime location.



Accommodation

Ground Floor

Entrance Hall

Lounge

15' 2" Max x 14' 3" Max (4.62m Max x 4.34m Max)

Kitchen

10' 5" x 9' (3.17m x 2.74m)

W/C

First Floor

Landing

Bedroom One

9' 7" x 9' 10" (2.92m x 3.00m)

Ensuite

Bedroom Two

10' 8" x 8' 6" (3.25m x 2.59m)

Bedroom Three

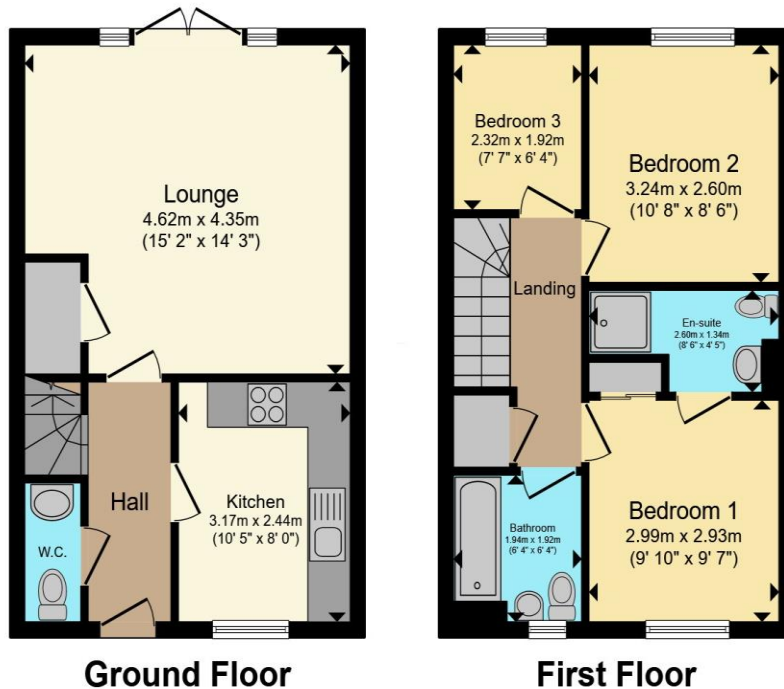
6' 4" x 7' 7" (1.93m x 2.31m)

Bathroom

01792 894422

gorseinon@peteralan.co.uk

Floorplan



Total floor area 70.4 m² (758 sq.ft.) approx

This floor plan is for illustrative purposes only. It is not drawn to scale. Any measurements, floor areas (including any total floor area), openings and orientation are approximate. No details are guaranteed, they cannot be relied upon for any purpose and they do not form part of any agreement. No liability is taken for any error, omission or misstatement. A party must rely upon its own inspection(s). Powered by www.propertybox.io

pa peter
alan

Important Information

Note while we endeavour to make our sales details accurate and reliable, if there is any point which is of particular interest to you, please contact the office and we will be pleased to confirm the position for you. We have not personally tested any apparatus, equipment, fixtures, fittings or services and cannot verify they are in working order or fit for their purposes. Nothing in these particulars is intended to indicate that carpets or curtains, furnishings or fittings, electrical goods (whether wired or not). Gas fires or light fittings or any other fixtures not expressly included form part of the property offered for sale. This computer generated Floorplan, if applicable, is intended as a general guide to the layout and design of the property. It is not to scale and should not be relied upon for dimensions. Tenure: We cannot confirm the tenure of the property as we have not had access to the legal documents. The buyer is advised to obtain verification from their solicitor or surveyor.

Peter Alan Limited is registered in England and Wales under company number 2073153, Registered Office is Cumbria House, 16-20 Hockliffe Street, Leighton Buzzard, Bedfordshire, LU7 1GN. VAT Registration Number is 500 2481 05. For activities relating to regulated mortgages and non-investment insurance contracts, Peter Alan Limited is an appointed representative of Connells Limited which is authorised and regulated by the Financial Conduct Authority. Connells Limited's Financial Services Register number is 302221. Most buy-to-let

pa peter
alan