



Flat 2

Millers Mews, Fryerning Lane, Ingatestone.
CM4 0DA

Nestled in the heart of the highly sought-after village of Ingatestone, this immaculately presented two-bedroom apartment at Millers Mews offers an exceptional blend of style, comfort...

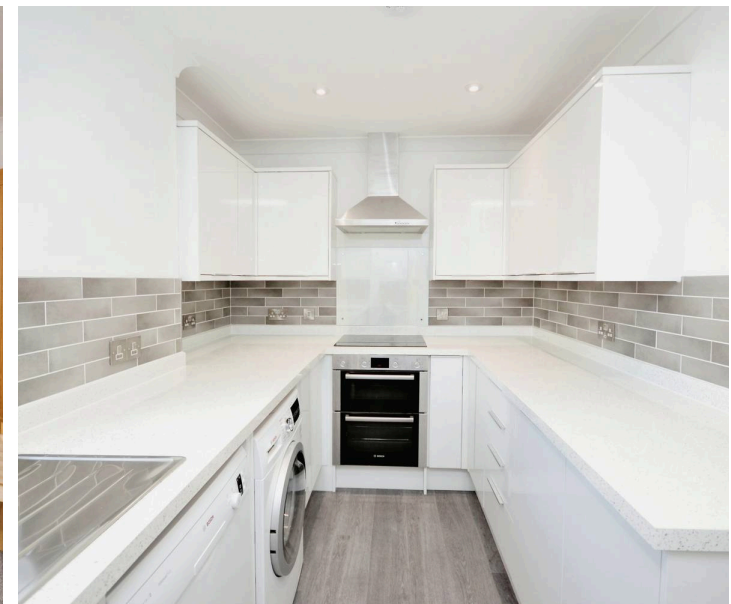
Council Tax band: TBD

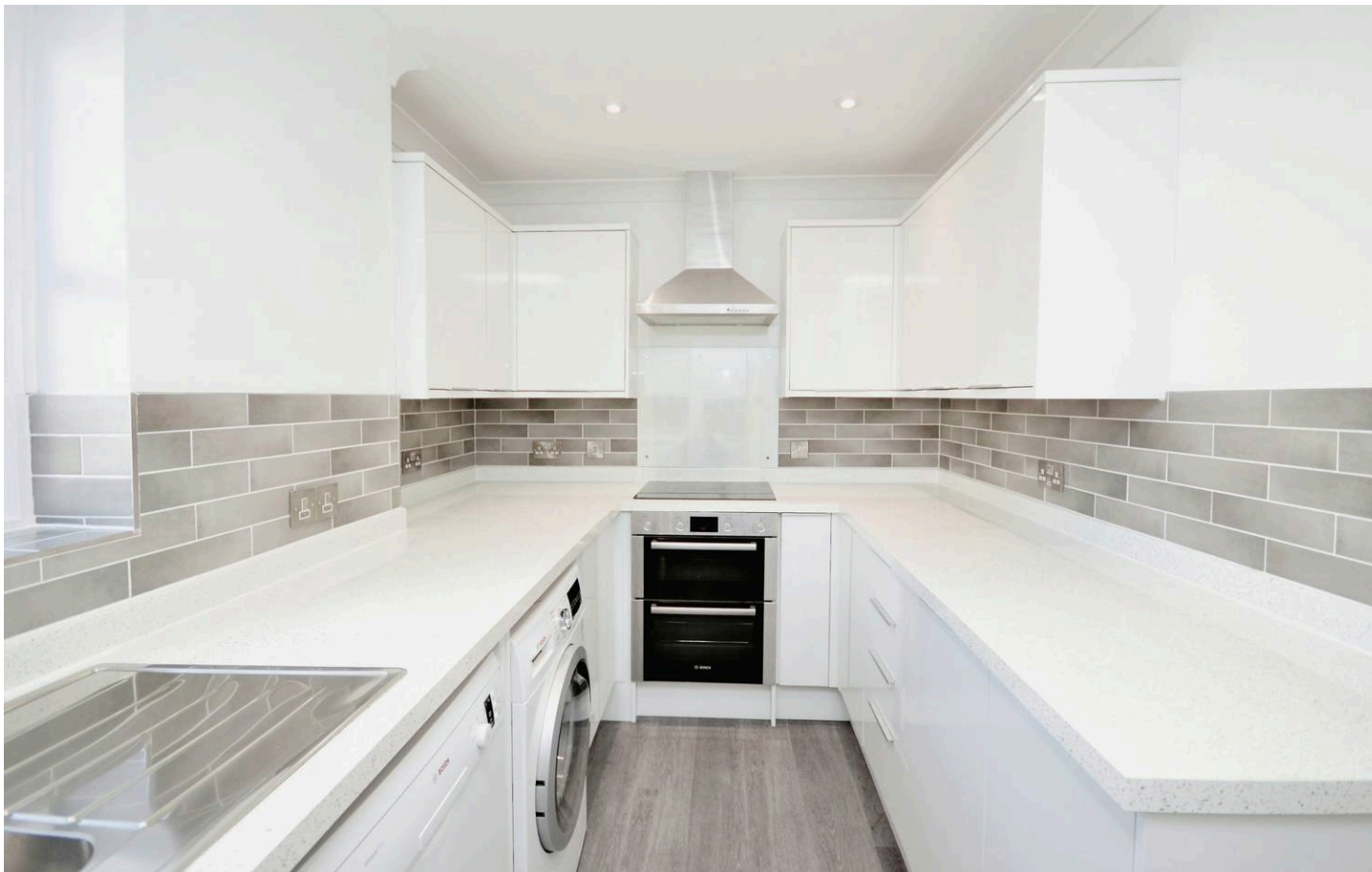
Tenure: Share of Freehold

EPC Energy Efficiency Rating: E

EPC Environmental Impact Rating: D

- Exceptionally Well Maintained
- Two Bedrooms
- Ground Floor Apartment
- No Onward Chain
- Share of Freehold
- Own Garage
- Central Village Location
- Bosch Appliances & House Alarm





Flat 2

Millers Mews Fryerning Lane, Ingatestone

Nestled in the heart of the highly sought-after village of Ingatestone, this immaculately presented two-bedroom apartment at Millers Mews offers an exceptional blend of style, comfort, and convenience.

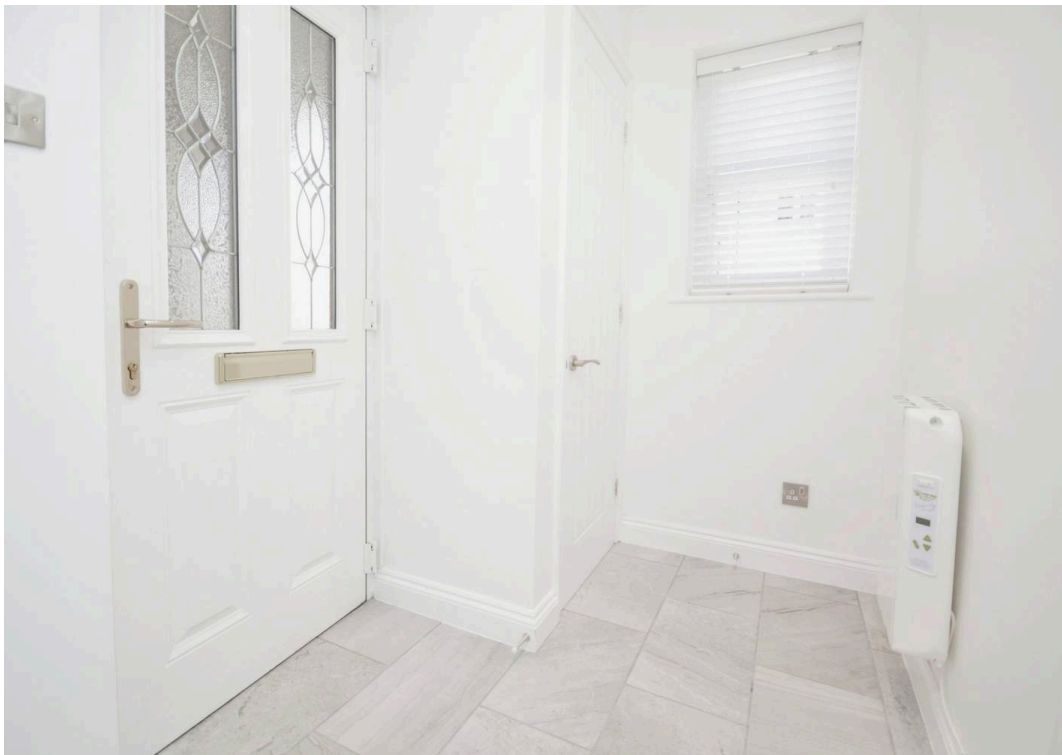
Offered with **no onward chain**, the property is ideal for buyers seeking a smooth and stress-free purchase. From the moment you step inside, the attention to detail is evident, with high-quality fittings and finishes throughout creating a contemporary yet welcoming living space.

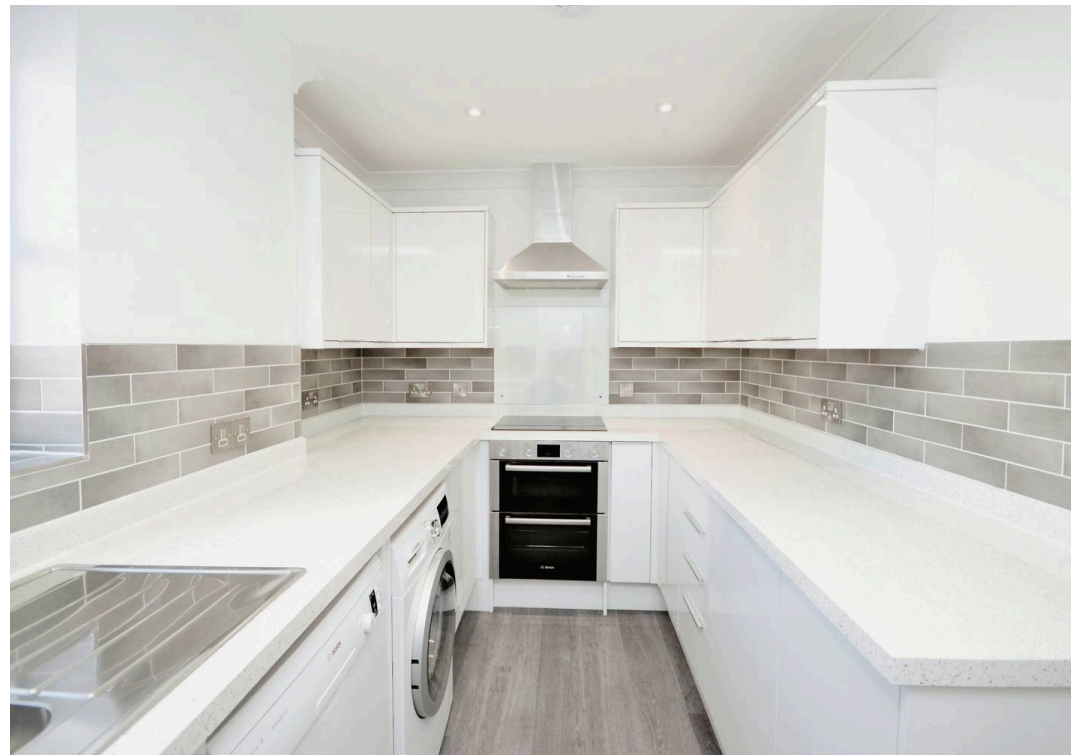
The apartment boasts a well-proportioned layout, featuring a bright and spacious living room - perfect for both relaxing and entertaining. The modern kitchen is thoughtfully designed, benefits from Bosch appliances and offers ample storage and workspace, while maintaining a sleek, stylish aesthetic. Two generously sized bedrooms provide comfortable accommodation, complemented by a well-appointed bathroom finished to a high standard.

Additional benefits include a **share of freehold**, offering greater control and long-term security, as well as the rare advantage of an **individually owned garage**, providing valuable storage or parking in this central location. The apartment also has an alarm system fitted.

Positioned within easy reach of Ingatestone's charming High Street, residents can enjoy a variety of boutique shops, cafés, and local amenities, along with excellent transport links, including direct rail services into London -









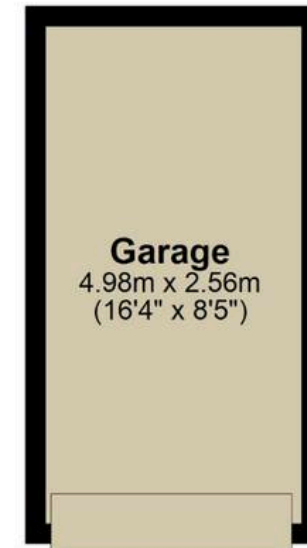
Ground Floor

Approx. 70.5 sq. metres (758.9 sq. feet)



Outbuilding

Approx. 12.7 sq. metres (137.2 sq. feet)



Psst... Have you heard of

Walkers discreet marketing?

Many people lose out on their dream home to someone in a better position.

Often, it is because they have delayed putting their house on the market, preferring to find somewhere first and then sell,

That is why we have innovated a totally unique and highly confidential moving home solution to put you in a competitive position.

Let us find you a buyer *without any advertising or pressure* and without the neighbours knowing.

Your secret is safe with us....

Get in touch for a complimentary valuation.

Looking To Sell Or Let Your Home?

Book your free valuation to see how much your home is worth.

Contact Us
01277 355005



Our Website

www.walkersstates.co.uk



Our Address

90 High Street
Ingatstone
CM4 9DW



www.walkersstates.co.uk

About Us

Walkers | People & Property is built on a lifelong family passion for homes. Martin, Gillian and Adam Walker lead a respected, professional team who live and breathe all aspects of property. With over 30 years of experience, we understand the moving process on a personal level and are committed to delivering exceptional results. Most of all, helping people move is our hobby, and handing over the keys to excited buyers remains our favourite moment.

Get In Touch



Browse Properties

