



Putney Heath Lane, SW15

£995,000

Dexters



Putney Heath Lane, SW15

Occupying the ground floor of an attractive period building, this large two bedroom garden flat extends to approximately 1,374 sq ft and offers a generous living and entertaining space. The standout feature is the stunning 40ft kitchen/dining room, beautifully designed with extensive cabinetry, worktop space and multiple sets of French doors that give this flat a bright homely feel.

The property further benefits from a spacious reception room, ideal for both relaxing and entertaining, together with two well-proportioned double bedrooms. The principal bedroom enjoys excellent proportions, while a separate utility room provides valuable additional storage and practicality. High ceilings, large windows and well-balanced accommodation enhance the sense of space throughout. To the rear, a beautifully landscaped private garden and terrace offer a peaceful retreat, with mature planting and a sunny seating area perfect for outdoor dining and entertaining.

Beechwood House enjoys a prime Putney location moments from the open green spaces of Putney Heath and within easy reach of Putney High Street. East Putney Underground Station, Putney Mainline Station and Southfields Underground Station are all within approximately 0.7 miles

Features

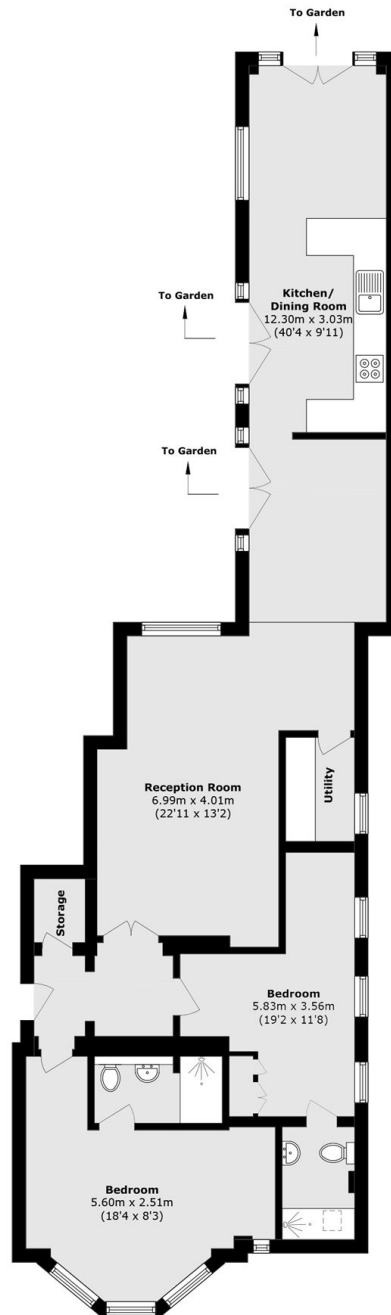
- Share Of Freehold
- Two Bedrooms
- Two Ensuite Bathrooms
- Large Private Garden
- Off Street Parking
- No Onward Chain







Putney Heath Lane, London, SW15



Total area (approx.): 127.6 sq. m (1373.4 sq. ft)