



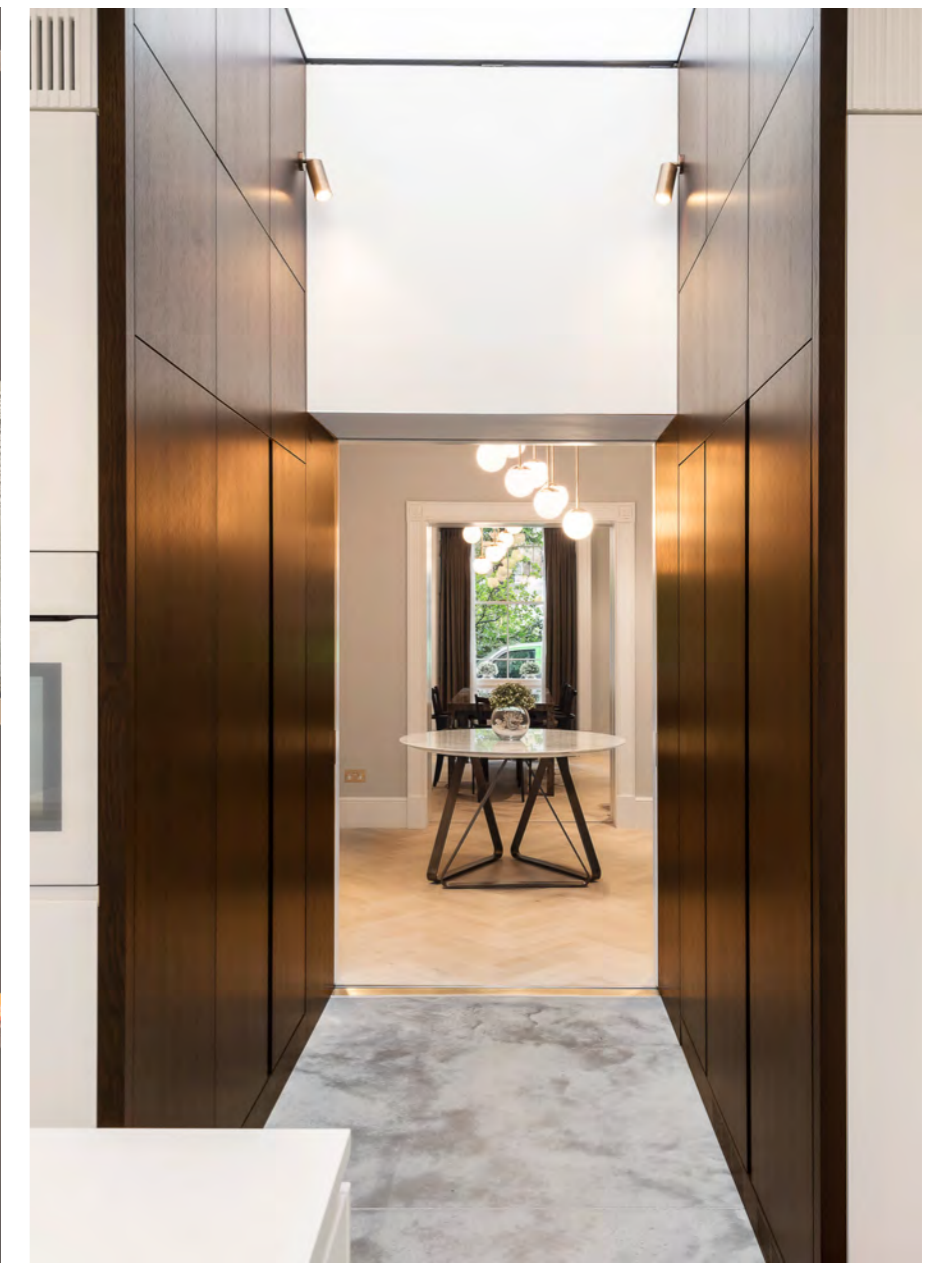
BROMPTON
SQUARE
SW3



A well appointed interior designed townhouse with access to communal gardens.

5 bedrooms, 4 bathrooms, first floor reception room, kitchen, family room, media room and gym, with the benefit of a lift and internal garage.

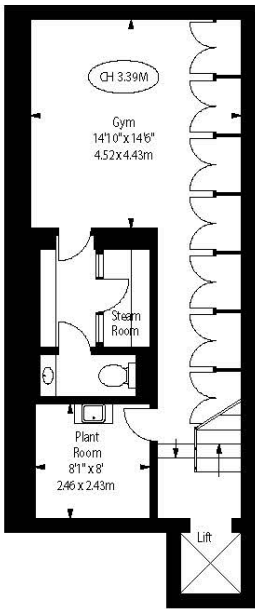




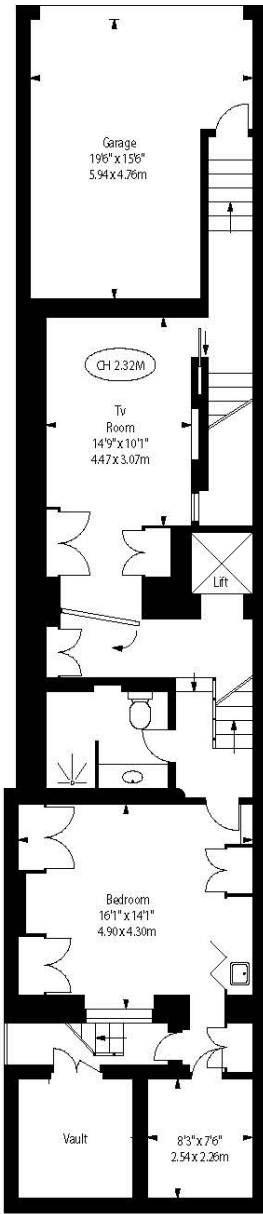
- Entrance Hallway
- Dining room
- Lounge
- Kitchen
- 1st Floor Reception Room
- Lift
- Guest WC
- Private Garage
- Master Bedroom Suite
- 4 Guest Bedrooms
- 3 Guest Bathrooms
- Study
- Gym
- Air Conditioning
- Balcony
- Communal Gardens



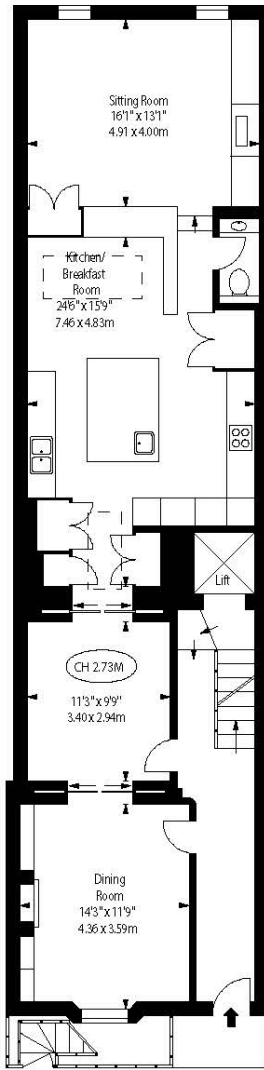




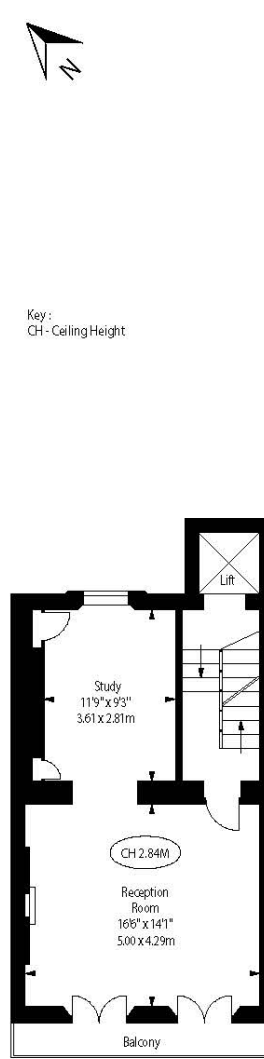
BASEMENT



LOWER GROUND FLOOR



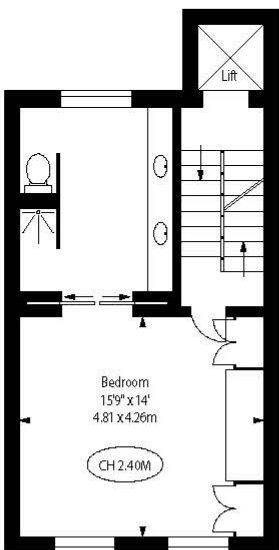
GROUND FLOOR



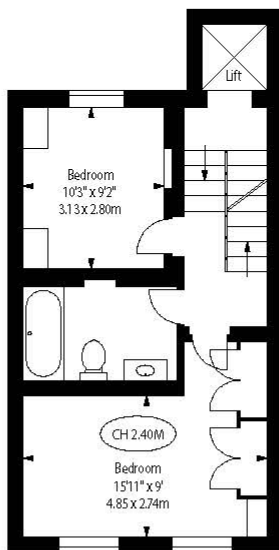
FIRST FLOOR



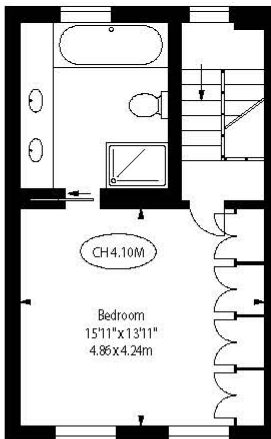
Key:
CH - Ceiling Height



SECOND FLOOR



THIRD FLOOR



FOURTH FLOOR

Gross Internal Area (Approx.)
4,596 sqft / 427 sqm



ALEXANDER
MILLETT