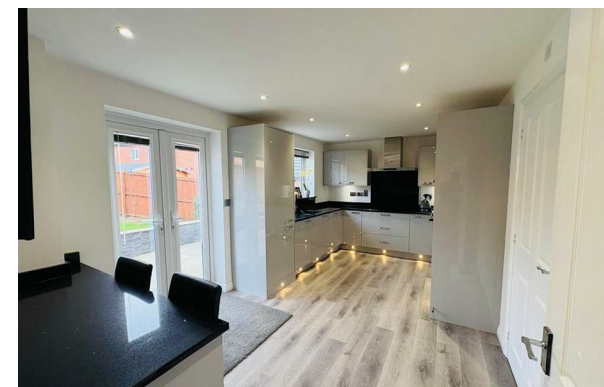




RESIDENTIAL



19 Oak Drive, Whinmoor, Leeds, LS14 2FB

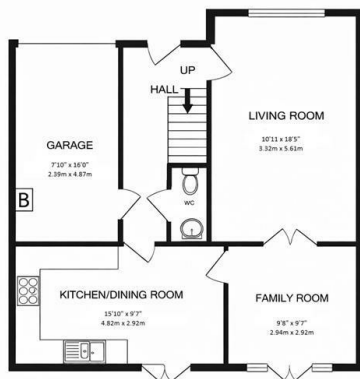
£445,000

- Spacious living room, dining room & contemporary kitchen diner
- Private rear garden with patio – ideal for entertaining
- Four generous bedrooms, including two en-suite
- Driveway parking & garage
- Modern family bathroom + downstairs WC
- Freehold | White Laith Primary School catchment

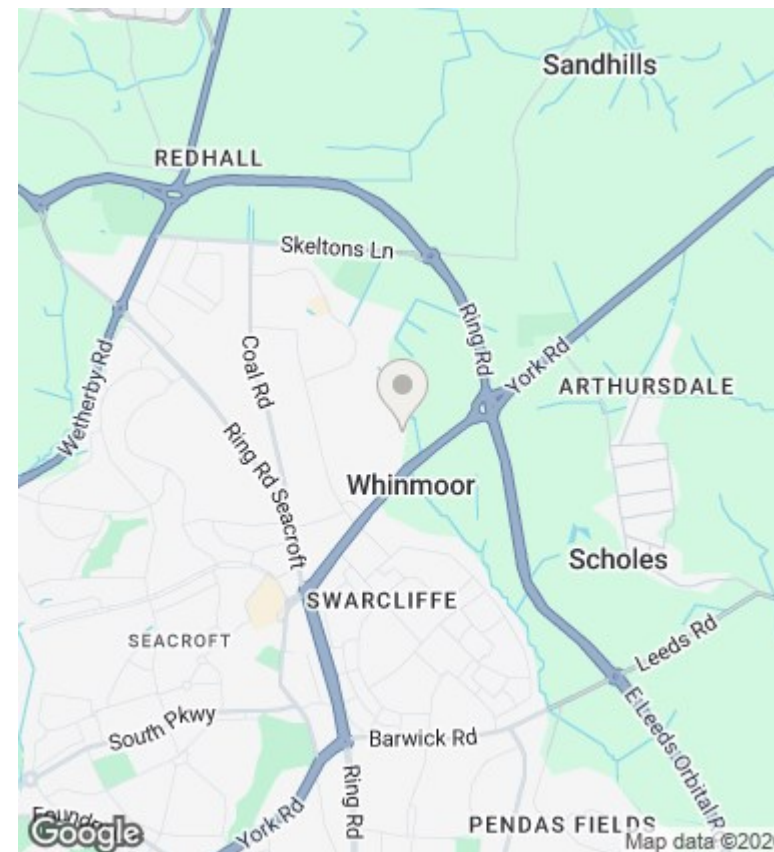
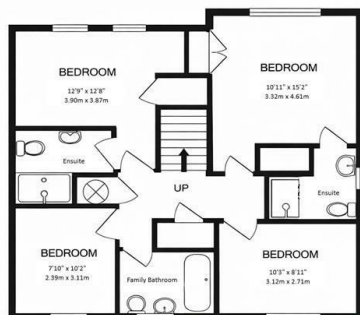
Unit 1 Feast Field, Horsforth, Leeds, LS18 4TJ
0113 3224 345

info@tkiresidential.co.uk
www.tkiresidential.co.uk

GROUND FLOOR
677 sq.ft. (62.9 sq.m.) approx.



FIRST FLOOR
677 sq.ft. (62.9 sq.m.) approx.



Directions

Viewings

Viewings by arrangement only. Call 0113 3224 345 to make an appointment.

Council Tax Band

EPC Rating:

B

Energy Efficiency Rating		Current	Potential
Very energy efficient - lower running costs			
(92 plus) A			92
(81-91) B		83	
(69-80) C			
(55-68) D			
(39-54) E			
(21-38) F			
(1-20) G			
Not energy efficient - higher running costs			
England & Wales		EU Directive 2002/91/EC	