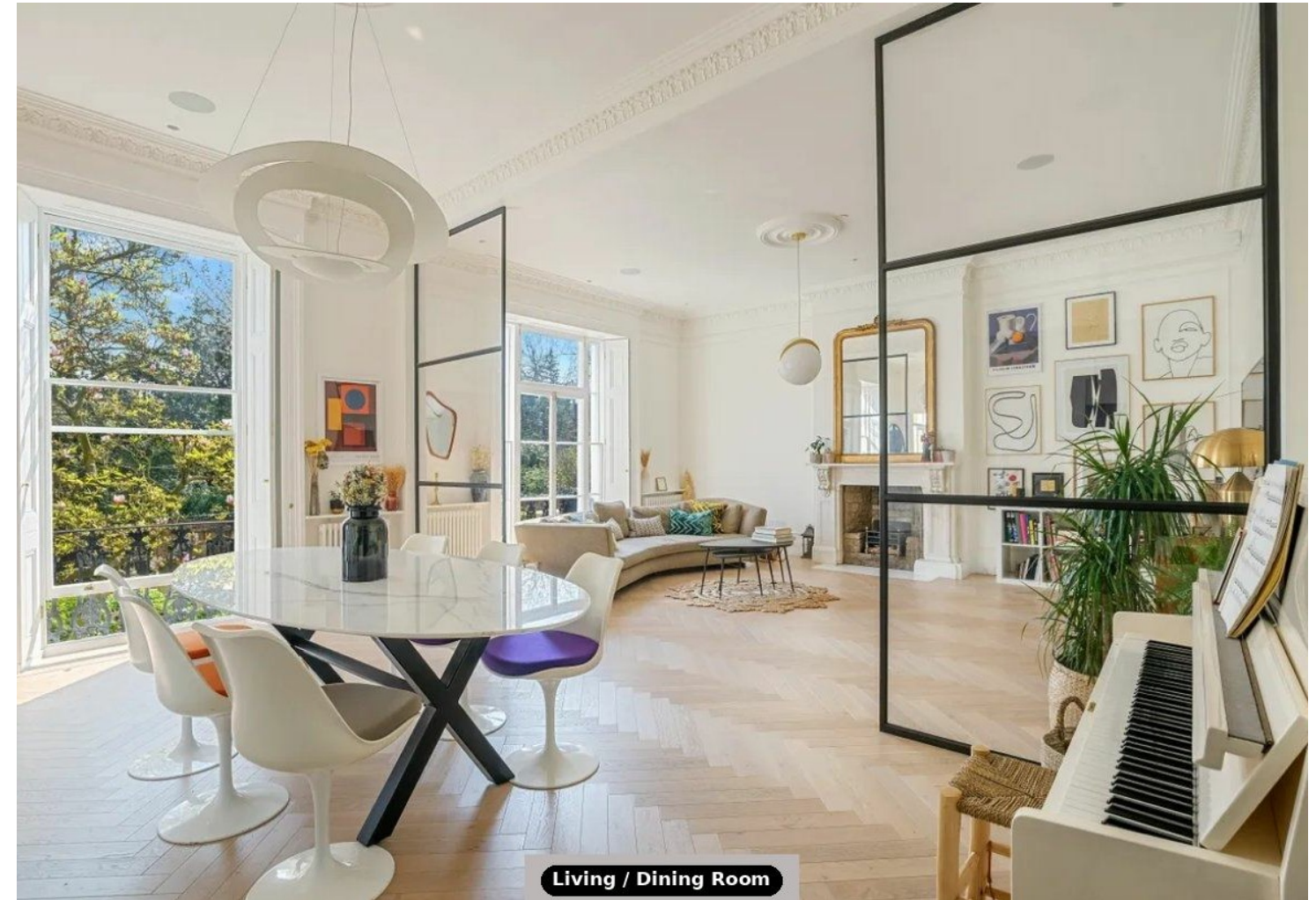


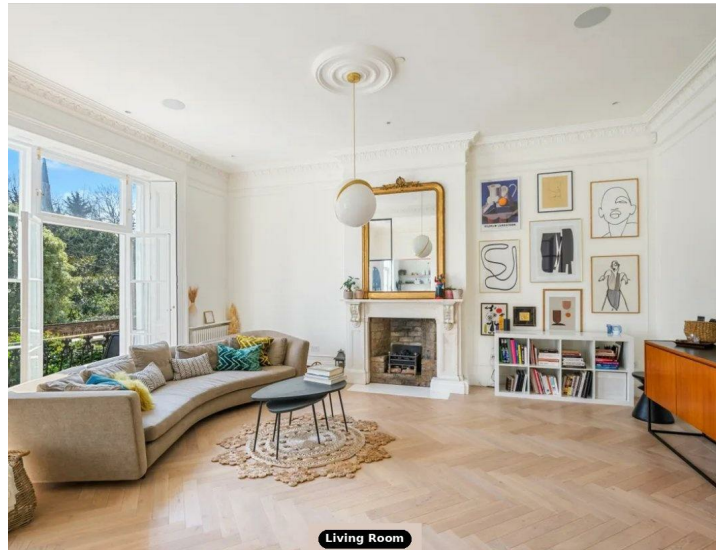
ILLUSTRATION FOR IDENTIFICATION PURPOSES ONLY  
ALL MEASUREMENTS ARE MAXIMUM, AND INCLUDE WINDOW BAYS AND WARDROBES WHERE APPLICABLE  
THIS PLAN MUST NOT BE REPRODUCED BY ANY OTHER PERSON WITHOUT PERMISSION



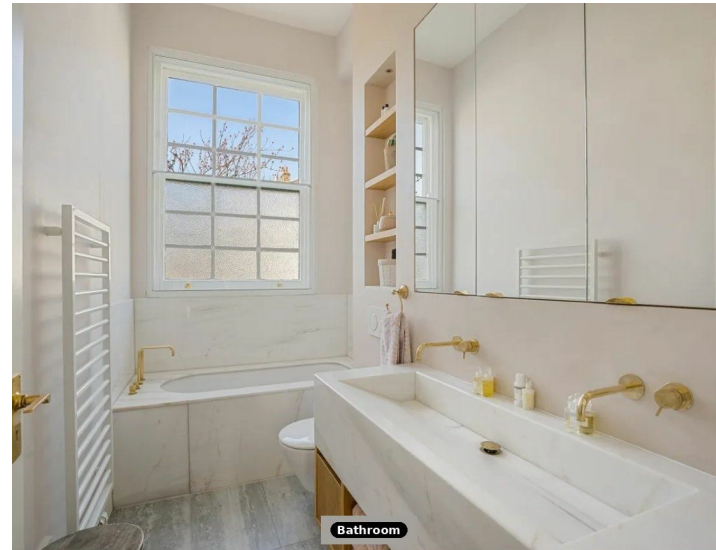
## Marlborough Place, NW8

A beautifully designed principal bedroom suite, quietly set above the main house and conceived almost as a private loft retreat. Though modest in size, it is exceptionally well arranged and entirely comfortable for everyday living, with excellent storage and a strong sense of separation from the rest of the apartment. Elegant Crittall doors open the room visually onto the kitchen and garden below, bringing in light and creating a striking sense of volume and airiness.

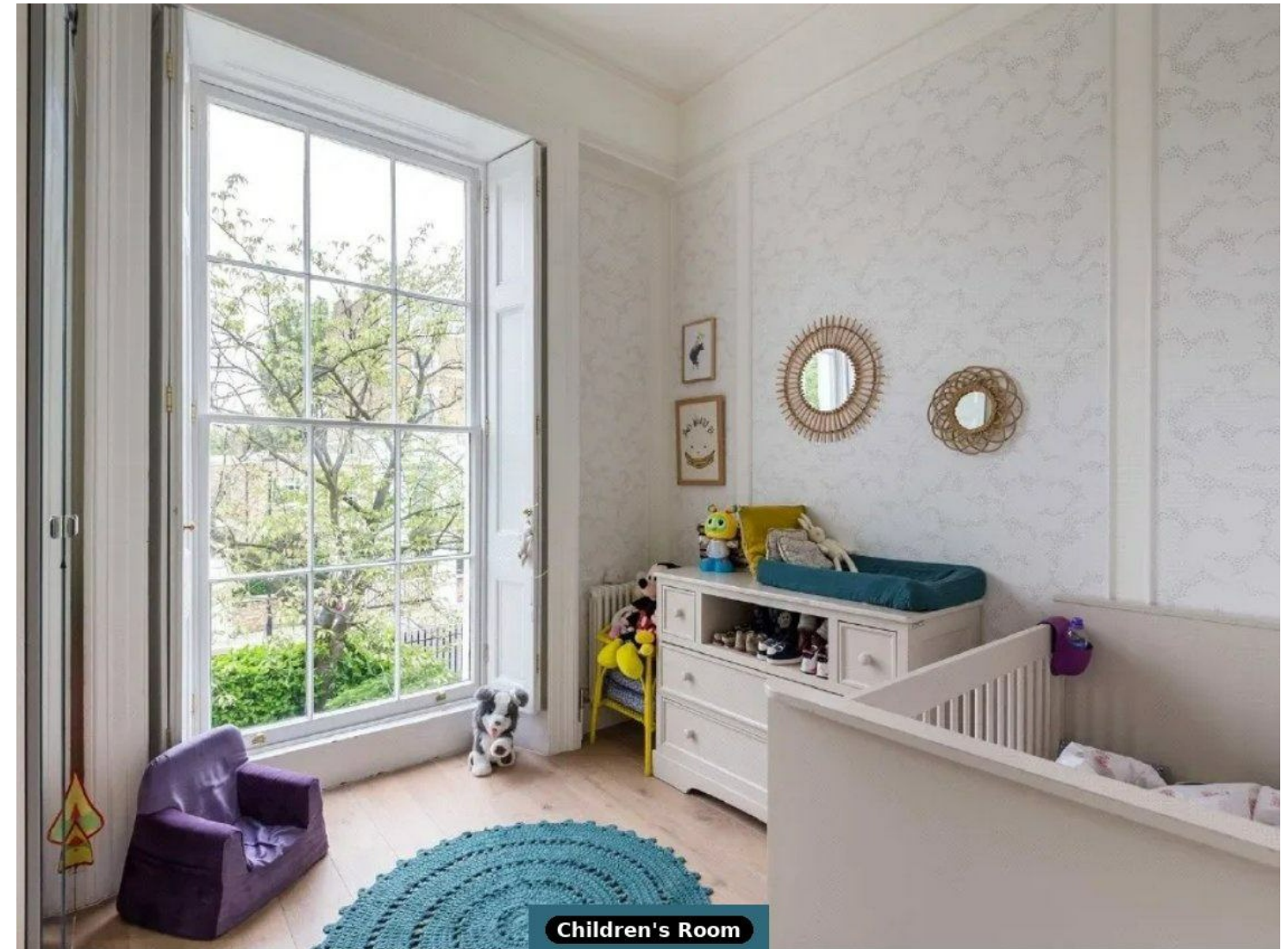
**£2,076.92 pw**



Living Room



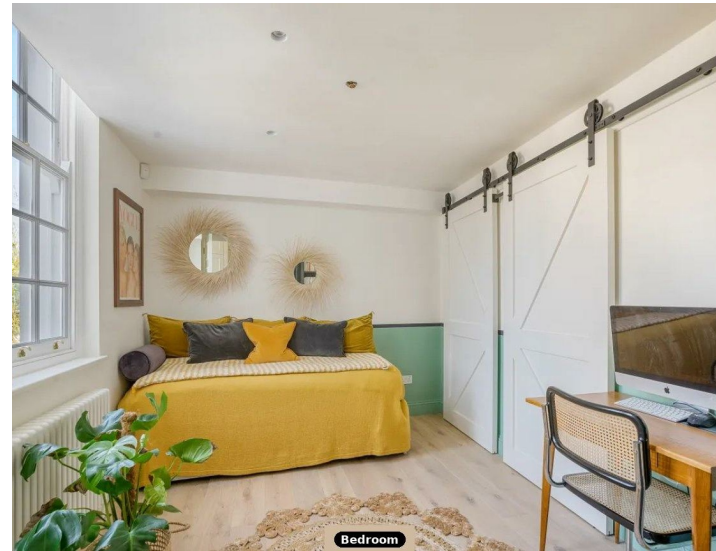
Bathroom



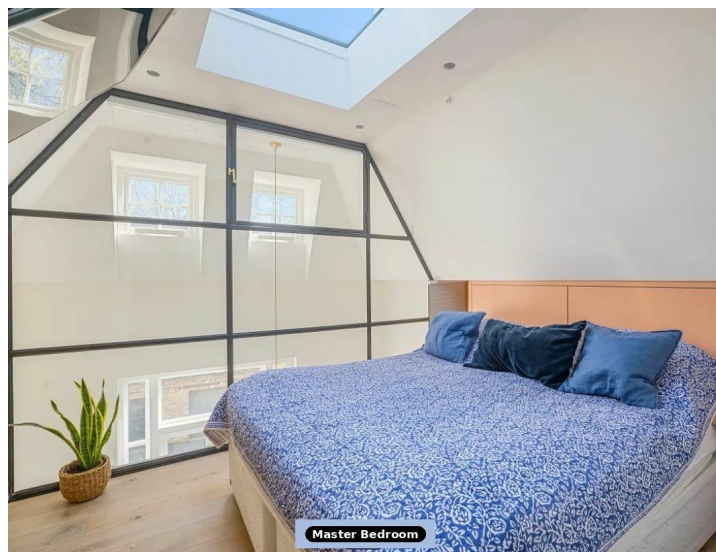
Children's Room



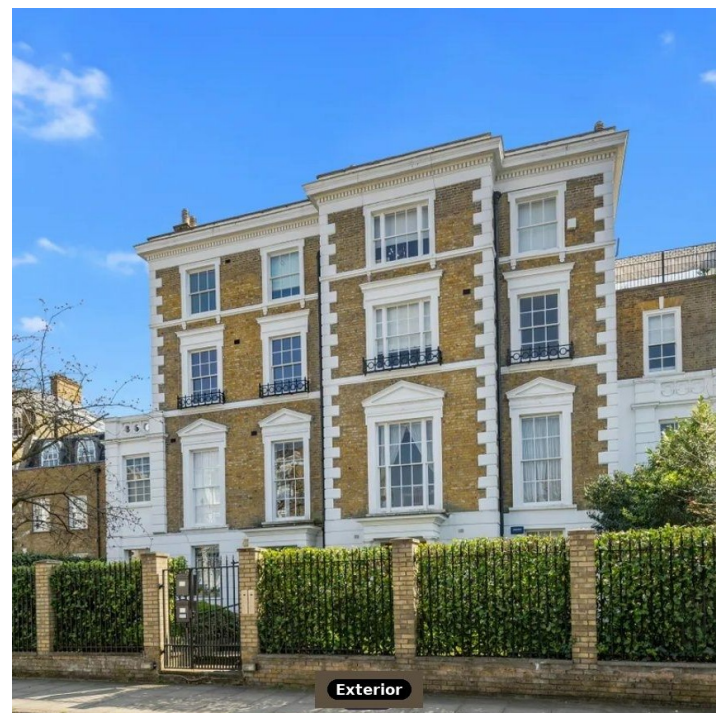
Kitchen



Bedroom



Master Bedroom



Exterior

## Features

- 4 bedrooms
- modern decor
- terrace
- premium and modern kitchen appliances
- private parking