



Gloucester Road, TW12

£1,695,000

Dexters



Gloucester Road, TW12

This handsome four bedroom home is an excellent example of the timeless Arts & Crafts style, with an elegant symmetrical facade, deep rooflines, prominent chimneys, multi-pane windows and rich brick detailing, all combining to create exceptional kerb appeal and lasting character.

A welcoming entrance hall leads to two beautifully appointed reception rooms, each enjoying excellent ceiling heights, abundant natural light and attractive feature fireplaces, ideal for both formal entertaining and relaxed day-to-day living. To the rear, the stunning kitchen/dining/family room forms the heart of the house, opening directly onto the garden. The first floor provides four well-proportioned bedrooms.

Outside, the mature rear garden offers a wonderful sense of privacy and seclusion, with lawned areas, terraces for outdoor dining and a range of substantial outbuildings ideal for a studio, gym, workshop or home office. To the front, landscaped planting and the garage complete the approach, with ample parking for three/four cars.

Gloucester Road is a prime tree lined road in central Hampton, with easy access to the station, Waitrose, outstanding state and private schools and the open spaces of Carlisle and Bushy Park.

Features

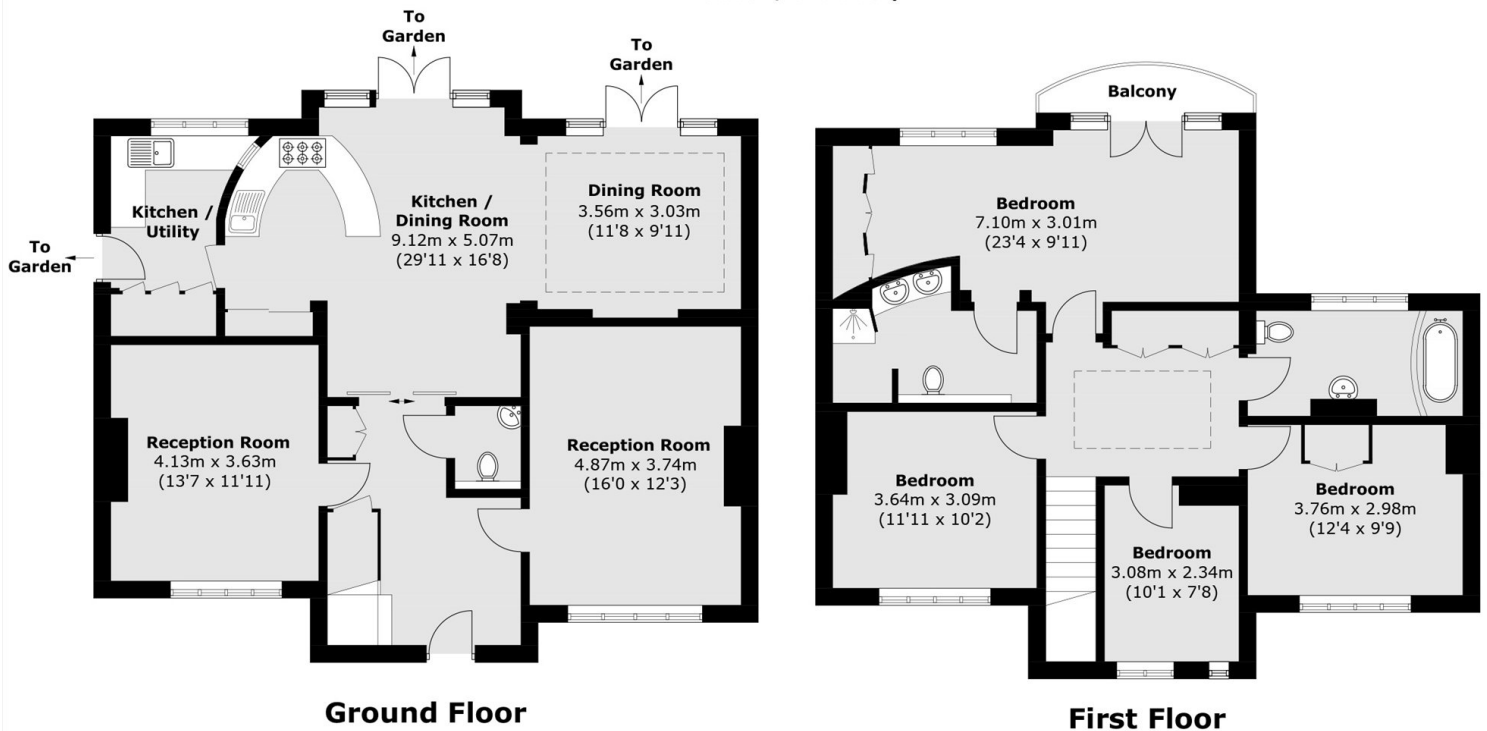
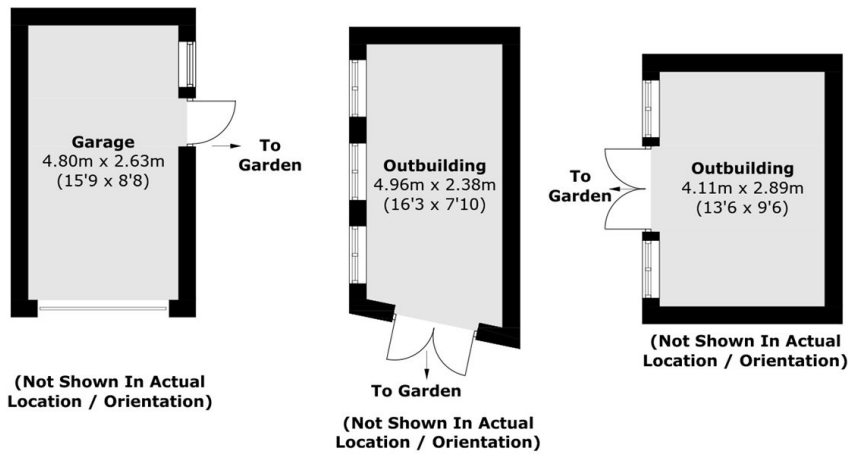
- Detached
- Four Bedrooms
- Arts & Crafts
- Carriage Driveway
- Private Garden
- Garage







Gloucester Road, Hampton, TW12



Total area (approx.): 173.1 sq. m (1,863.1 sq. ft)

Outbuildings : 36.3 sq. m (390.7 sq. ft)

Balcony : 2.5 sq. m (26.9 sq. ft)