

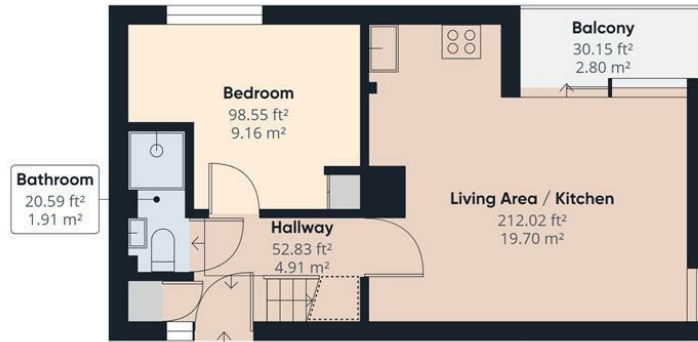


4 Bed
Maisonette
located in

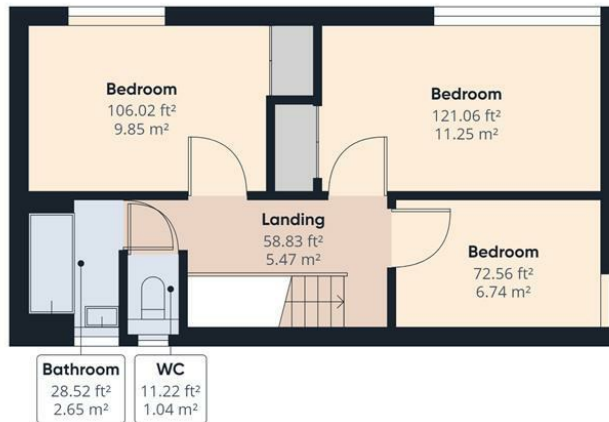
£4,100 Per Month



ROCKET



Floor 1



Floor 2

Approximate total area⁽¹⁾

806.68 ft²
74.94 m²

Reduced headroom

11.68 ft²
1.09 m²

(1) Excluding balconies and terraces

Reduced headroom
(below 1.5m/4.92ft)

While every attempt has been made to ensure accuracy, all measurements are approximate, not to scale. This floor plan is for illustrative purposes only.

GIRAFFE360

DIRECTIONS

CONTACT

265-269 Wimbledon Park Road
Southfields
London
SW19 6NW

E: info@rocketpm.co.uk
T: 02079594128
<https://www.rocketpm.co.uk/>

