

Churchills

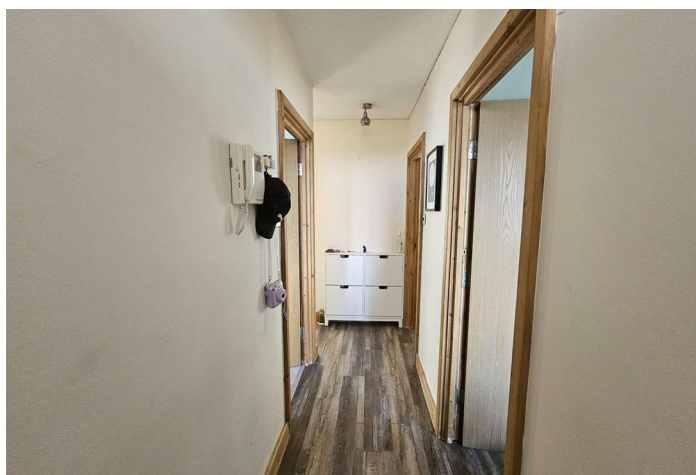


Eccles New Road

, Salford M5 4UR

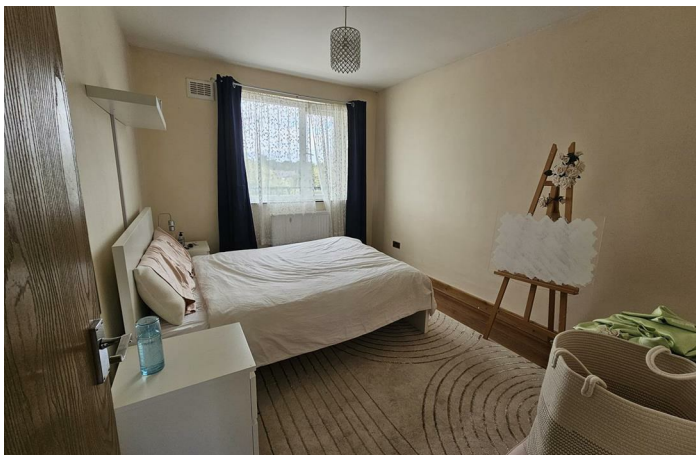
- THIRD FLOOR APARTMENT
- ALLOCATED PARKING / SECURE ACCESS
 - ONSITE COMMUNAL GYM
- MODERN KITCHEN & BATHROOM
 - EPC RATING D
- THREE BEDROOMS
- GREAT LOCATION
- SPACIOUS LIVING
- GAS CENTRAL HEATING

£1,150 Per Calendar Month





Location





Local Authority Manchester
Council Tax Band B
EPC Rating D



Churchills Lettings Office

16 High Street, Mexborough, South
Yorkshire, S64 9AS

Contact

01709 582880
Info@churchillsestateagents.com
www.churchillsestateagents.com

Agents Note: Whilst every care has been taken to prepare these particulars, they are for guidance purposes only. All measurements are approximate and for general guidance purposes only and whilst every care has been taken to ensure accuracy, they should not be relied upon and potential buyers/tenants are advised to recheck the measurements.