

### Directions

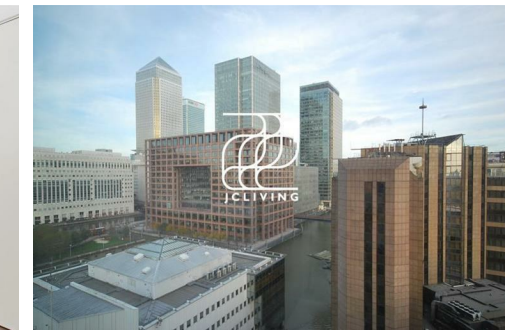
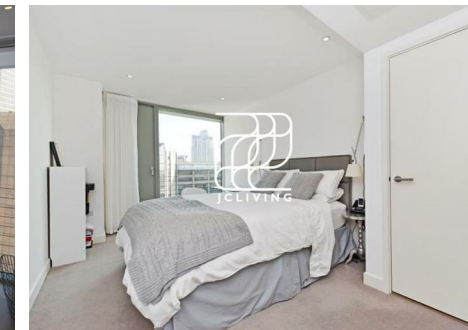
### Viewings

Viewings by arrangement only. Call 02033696888 to make an appointment.

### EPC Rating

B

Energy Efficiency Rating		
	Current	Potential
Very energy efficient - lower running costs		
(92 plus) <b>A</b>		
(81-91) <b>B</b>	83	83
(69-80) <b>C</b>		
(55-68) <b>D</b>		
(39-54) <b>E</b>		
(21-38) <b>F</b>		
(1-20) <b>G</b>		
Not energy efficient - higher running costs		
<b>England &amp; Wales</b>	EU Directive 2002/91/EC	



NZ03, Flat 1302, Landmark East Tower 24 Marsh Wall, London, E14 9BT

£670 Per Week

- Residents garden
- Concierge services
- Furnished
- Excellent transport links
- Council tax band E
- Residents gym
- 24/7 security
- Full double glazed windows
- Local amenities

# Landmark East Tower 24 Marsh Wall, London E14 9BT

\*\*\* Please quote reference JC24051491 when contacting the office \*\*\*

A luxury one bedroom apartment to rent located on the thirteenth floor of this modern development, The Landmark, right on the door step of Canary Wharf.

The spacious living room has wooden flooring with a sizeable open plan kitchen tucked around the corner. The property benefits from an abundance of space and natural light. The bathroom is finished to a high standard with plenty of storage. The bedroom is a good size and contains built in storage.

The building also contains a gym as well as being extremely handily located. You are a short walk from Canary Wharf with its shops bars and restaurants. This also means that there is great access to the DLR and Jubilee line.

EPC Rating: B  
Council: Tower Hamlets  
Council Tax band: E



Council Tax Band: E

