



Stratford Road, Loxley

Warwick, CV35 9JN

Jeremy
McGinn & Co

Available at
Guide Price £475,000



Occupying a delightful position within the pretty and highly regarded village of Loxley, Clematis Cottage is an attractive semi-detached, double-fronted home offered for sale with the advantage of no onward chain. The cottage has been well loved and maintained and is very habitable, yet offers excellent scope for a purchaser to update and enhance to their own taste while retaining its inherent charm and character.

The accommodation begins with a spacious living dining room, a welcoming and versatile space featuring two fireplaces which provide attractive focal points and reflect the cottage's traditional appeal. Also on the ground floor is a fitted kitchen and a ground floor bathroom, adding practicality to the layout. A characterful cottage-style staircase leads to the first floor, where there are three bedrooms, all enjoying pleasant outlooks, together with a modern shower room.

Externally, the property benefits from a mature and well-established garden, predominantly laid to lawn with a patio area providing an ideal spot for outdoor seating and relaxation.

Of particular note is the separate parcel of land located opposite the cottage, a rare and valuable addition. This includes a detached double garage, ample off-road parking and further garden space, offering flexibility for a variety of uses.

Combining a sought-after village location, generous outdoor space, and considerable potential, this charming cottage represents a wonderful opportunity for those seeking a character home with room to personalise, all within easy reach of local amenities and countryside walks.



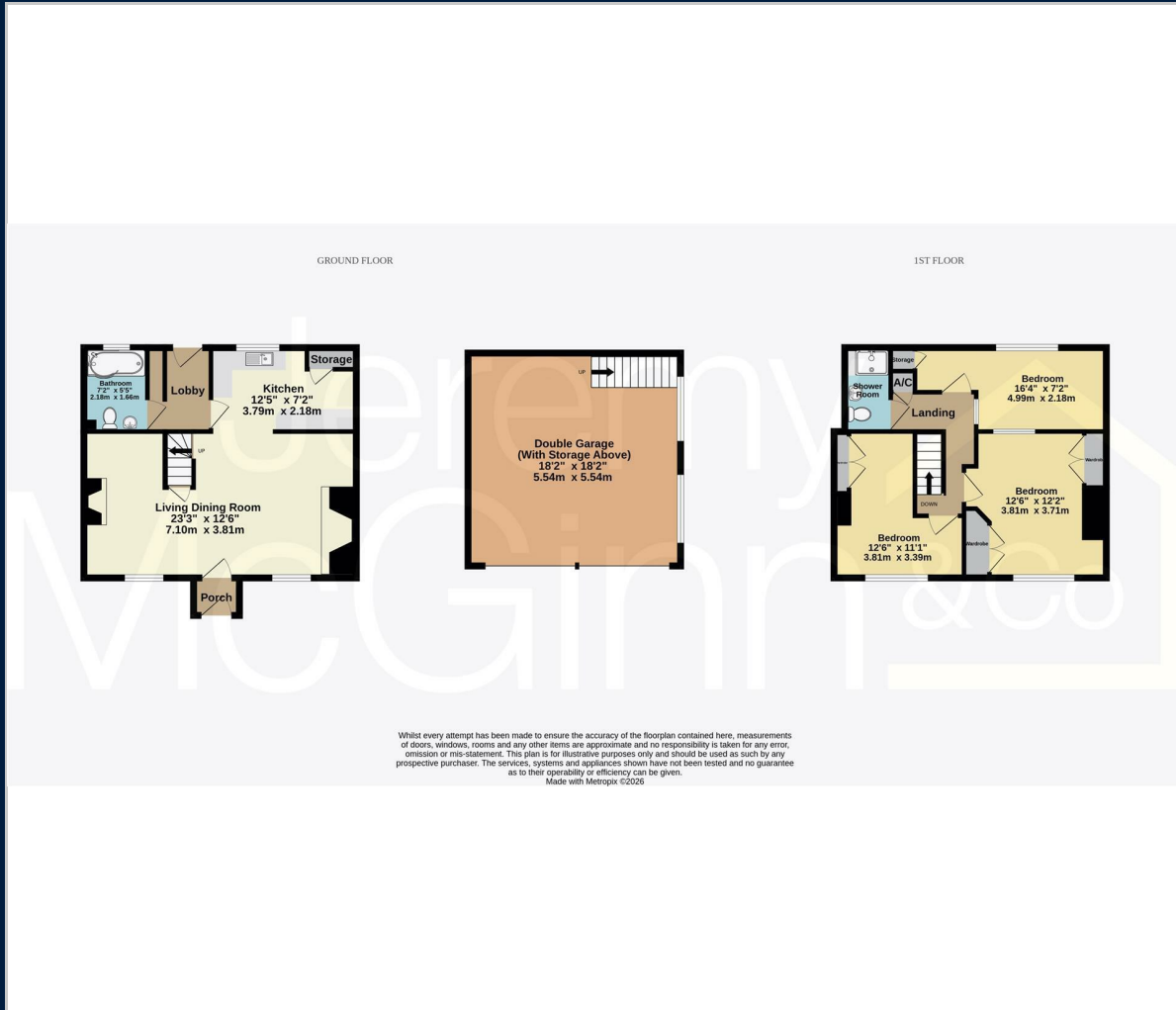


Tax Band: D

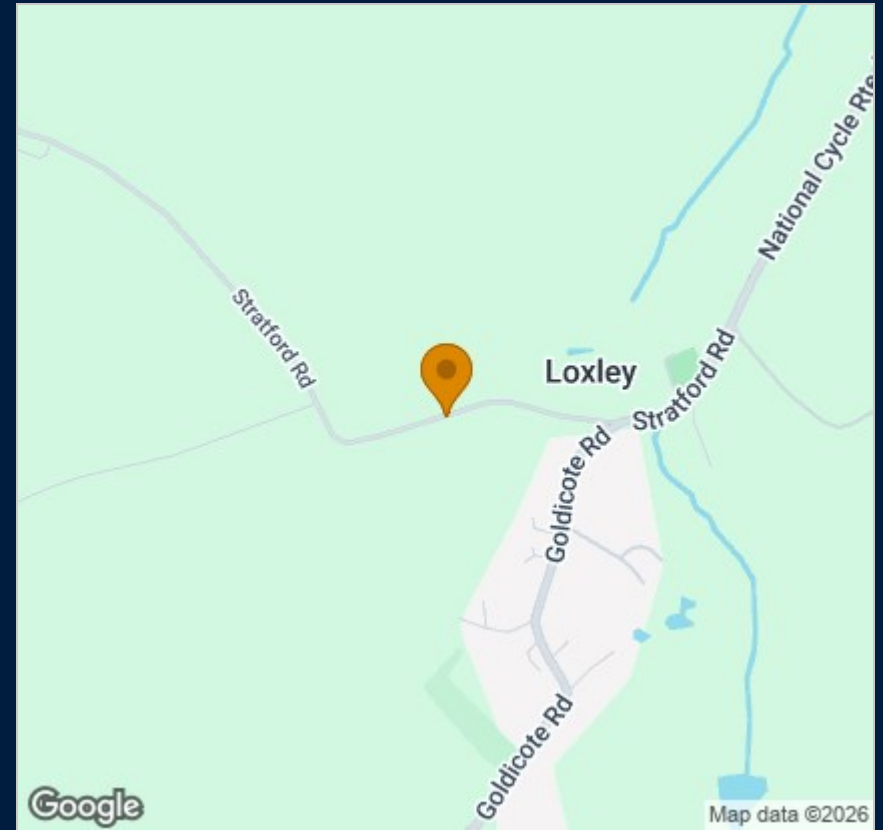
Council: Stratford District Council

Tenure: Freehold

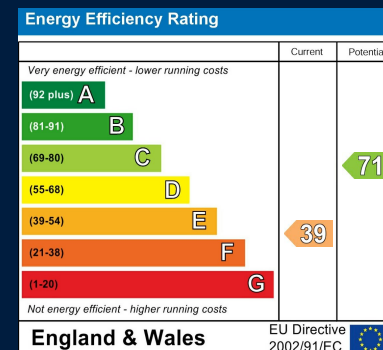
Floor Plan



Map



Energy Performance



These particulars, whilst believed to be accurate are set out as a general outline only for guidance and do not constitute any part of an offer or contract. Intending purchasers should not rely on them as statements of representation of fact, but must satisfy themselves by inspection or otherwise as to their accuracy. No person in this firm's employment has the authority to make or give any representation or warranty in respect of the property.