



40 Lilac Crescent GFF, Beeston Rylands, Nottingham, NG9 1PX

£895 PCM

- 1 Bathroom
- 2 Bedrooms
- Small Garden
- Children Welcome
- Flat
- 1 Receptions
- Driveway Parking Available
- Sorry, No Smokers
- Unfurnished Property
- Beeston Rylands

40 Lilac Crescent GFF, Nottingham NG9 IPX

TWO BEDROOM GROUND FLOOR APARTMENT TO RENT IN BEESTON

Robert Ellis are delighted to offer to the market this part refurbished ground floor apartment in the heart of Beeston Rylands. In brief the property comprises, entrance to the open plan kitchen, living room, two double bedrooms, and recently refitted shower room.

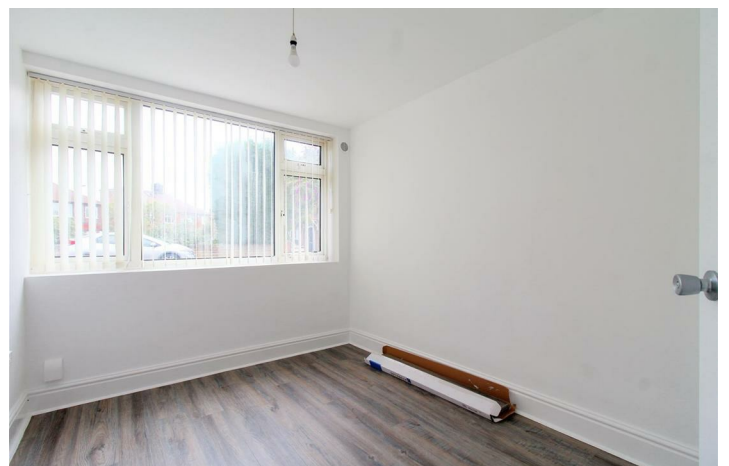
Available 21st May 2026. Viewings by appointment. Beeston Office.

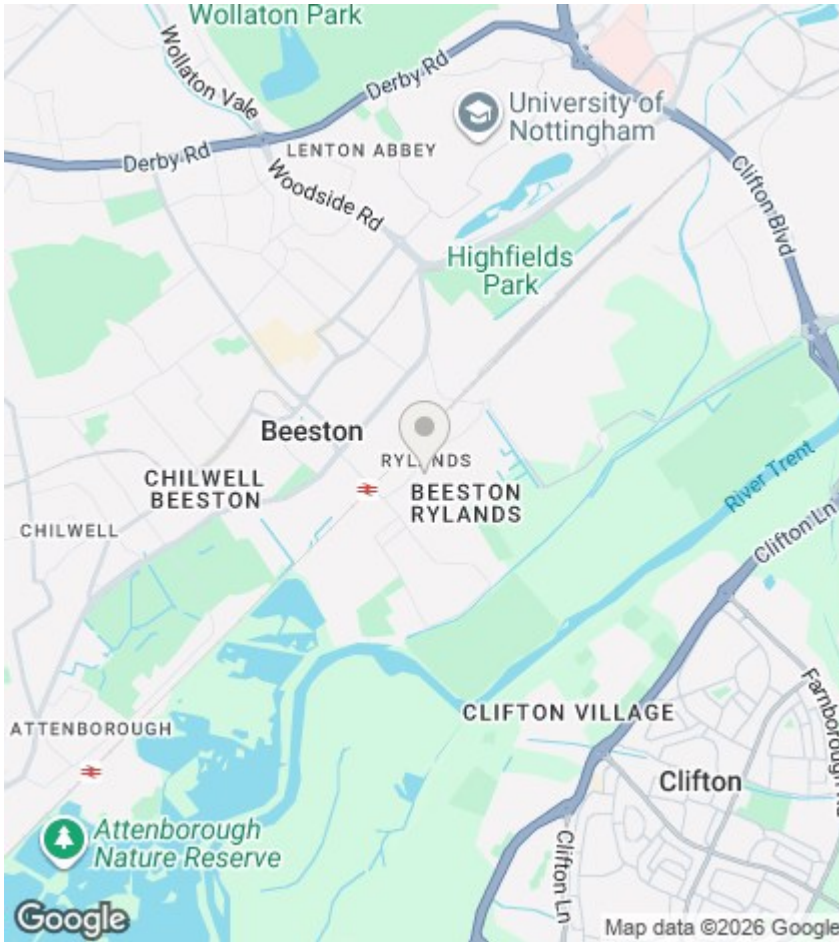
Council tax band - A

EPC Rating - D



Council Tax Band:





Directions

Viewings

Viewings by arrangement only. Call 0115 9229090 to make an appointment.

EPC Rating:
D

Energy Efficiency Rating		Current	Potential
Very energy efficient - lower running costs			
(92 plus) A			
(81-91) B			
(69-80) C			
(55-68) D		67	77
(39-54) E			
(21-38) F			
(1-20) G			
Not energy efficient - higher running costs			
England & Wales		EU Directive 2002/91/EC	