



Shearwater Drive, NW9 £525,000

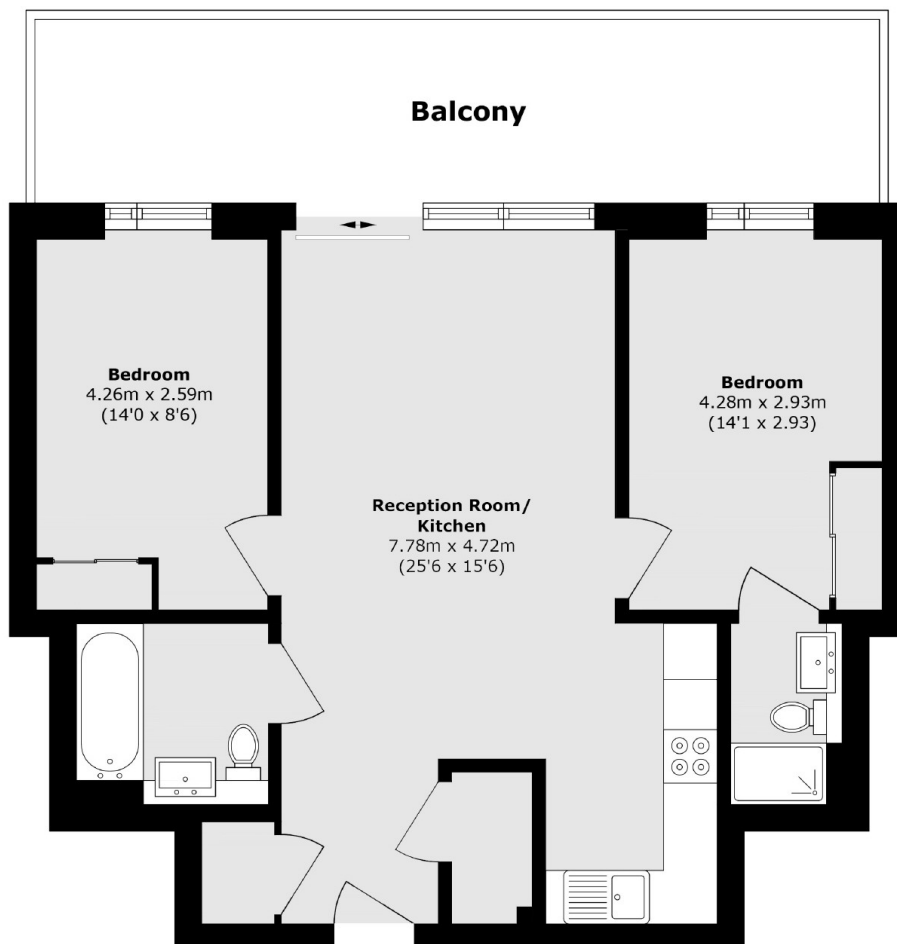
A stunning two double bedroom, two bathroom apartment set within a sought after development, completed in 2022. The apartment is in immaculate condition and benefits from a spacious private balcony with uninterrupted panoramic lake views.

This development overlooks the Welsh Harp Nature Reserve and Reservoir, ideally located for excellent transport links, with Hendon Thameslink providing fast access into Central London.

Features

- Two Double Bedrooms
- Two Bathrooms
- Lake Facing Balcony
- Modern Build (2022)
- Secure Parking Space
- Bright and Airy

Shearwater Drive,
London, NW9



Total area (approx.): 66.7 sq. m (717.9 sq. ft)

Balcony area (approx.): 19.4 sq. m (208.8 sq. ft)