



ATKINSON CLOSE, SW20

£375,000

Prestigious development
One double bedroom
Ground floor
Private terrace
Secure underground parking
Energy rating: b

@marshandparsons
marshandparsons.co.uk

MARSH &
PARSONS



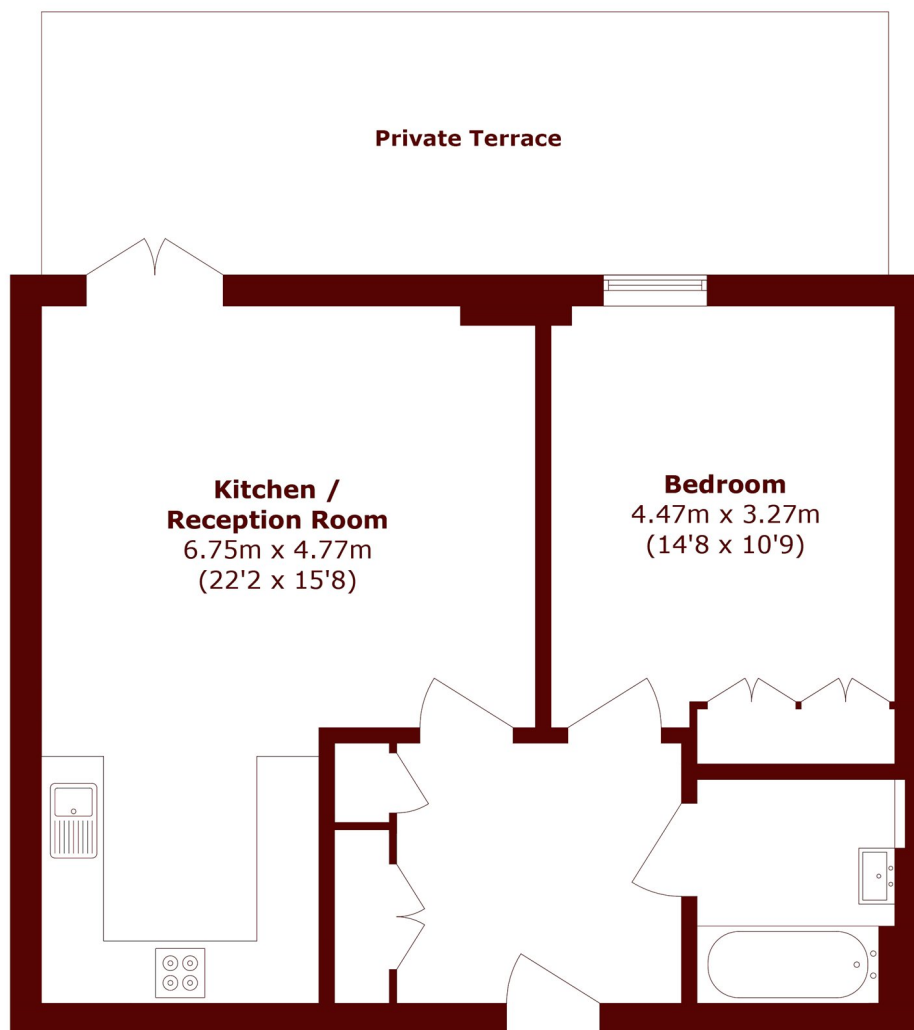
ABOUT THE PROPERTY

A superb ground floor one double bedroom apartment located within the exclusive development of Chambers Park Hill. The property benefits from a private terrace, concierge service, secure underground parking, access to well-manicured communal gardens, available meeting room for hire, a cinema, library and well-equipped gym. The property is offered with no onward chain.

Chambers Park Hill is located off Copse Hill with easy access to Wimbledon Common and the Village's local amenities, boutique shops and restaurants.



STEP INSIDE ATKINSON CLOSE



Total area (approx.): 55.6 sq. m (598.4 sq. ft)

Wimbledon
020 8879 6660

Energy Rating: B We aim to make our particulars both accurate and reliable. However, they are not guaranteed; nor do they form part of an offer or contract. If you require clarification on any points then please contact us, especially if you're traveling some distance to view. Please note that appliances and heating systems have not been tested and therefore no warranties can be given as to their good working order

**MARSH &
PARSONS**