

Parkheath

Sold on Service

Belsize Park NW3
£2,400 PCM (£554 per week) - Camden Band C

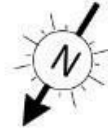



Smart and bright one double bedroom apartment
High ceilings and wood floors throughout
Modern open plan kitchen with all appliances
Located moments to Swiss Cottage underground

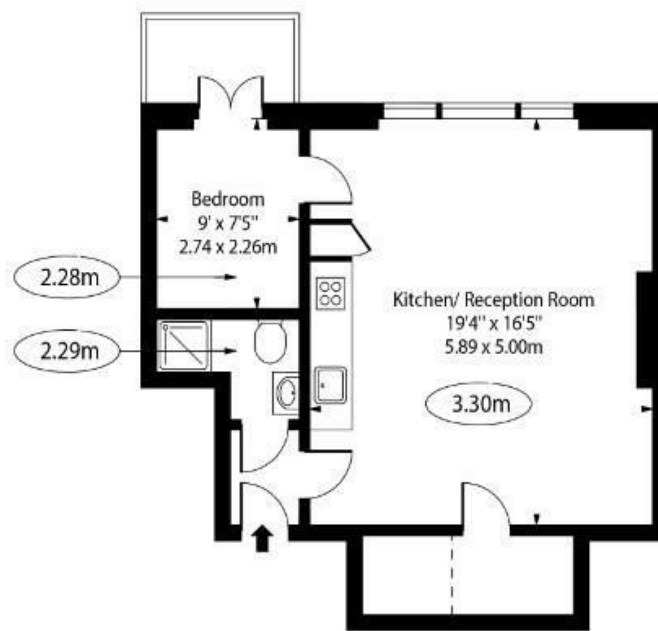
1st floor in imposing period conversion
Reception with feature fire place
Contemporary shower room
EPC: Rating C, Council Tax: Camden band C

Belsize Park Office 020 7431 3104

Belsize Park NW3 4EE



 - Ceiling Height



First Floor

Approx Gross Internal Area 448 Sq Ft - 41.62 Sq M

Approx Floor Area Including Restricted Heights 464 Sq Ft - 43.10 Sq M

For Illustration Purposes Only - Not To Scale Floor Plan by www.nogaphotostudio.com Ref: No.52192

This floor plan should be used as a general outline for guidance only. Any intending purchaser or lessee should satisfy themselves by inspection, searches, enquiries and full survey as to the correctness of each statement. Any areas, measurements or distances quoted are approximate and should not be used to value a property or be the basis of any sale or let.

The particulars do not constitute part of an offer or contract. The particulars, including text, photographs and plans, are for the guidance only of prospective purchasers/tenants and must not be relied upon as statements of fact. The descriptions provided therein represent the opinion of the author and whilst given in good faith should not be construed as statements of fact. Nothing in these particulars shall be deemed a statement that the property is in good condition or otherwise or that any services or facilities are in good working order. All measurements are approximate