

PACIFIC HOUSE

MARLOW

[CLICK HERE TO BOOK YOUR APPOINTMENT](#)

You are invited

TO THE OFFICIAL LAUNCH EVENT

SATURDAY 25TH APRIL

by appointment only

Welcome to Pacific House, a stylish collection of just twenty-eight contemporary starter, 1 and 2 bedroom apartments ideally positioned close to Marlow's vibrant town centre. This modern new development combines elegant architecture with thoughtfully planned interiors, offering bright open-plan homes finished to a high specification throughout.



A stylish new development of just twenty eight starter, 1 & 2 bedroom apartments

Bright open-plan living spaces

High-specification finishes throughout

Modern kitchens with integrated appliances

Premium bathrooms & shower rooms

Smart low-energy electric heating

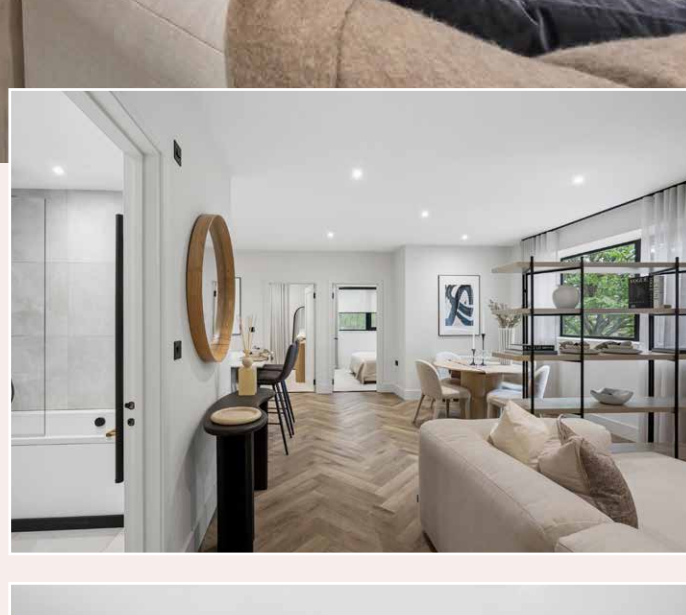
Ideally located close to Marlow town centre

Gated allocated parking & lift access

Excellent transport links to London Paddington in approx.

46 mins from Marlow

FIRST RELEASE PRICING £232,500 - £360,000



ALWAYS ACCESSIBLE



BY RAIL

MAIDENHEAD ————— 18 MINS

READING ————— 40 MINS

LONDON PADDINGTON ————— 46 MINS



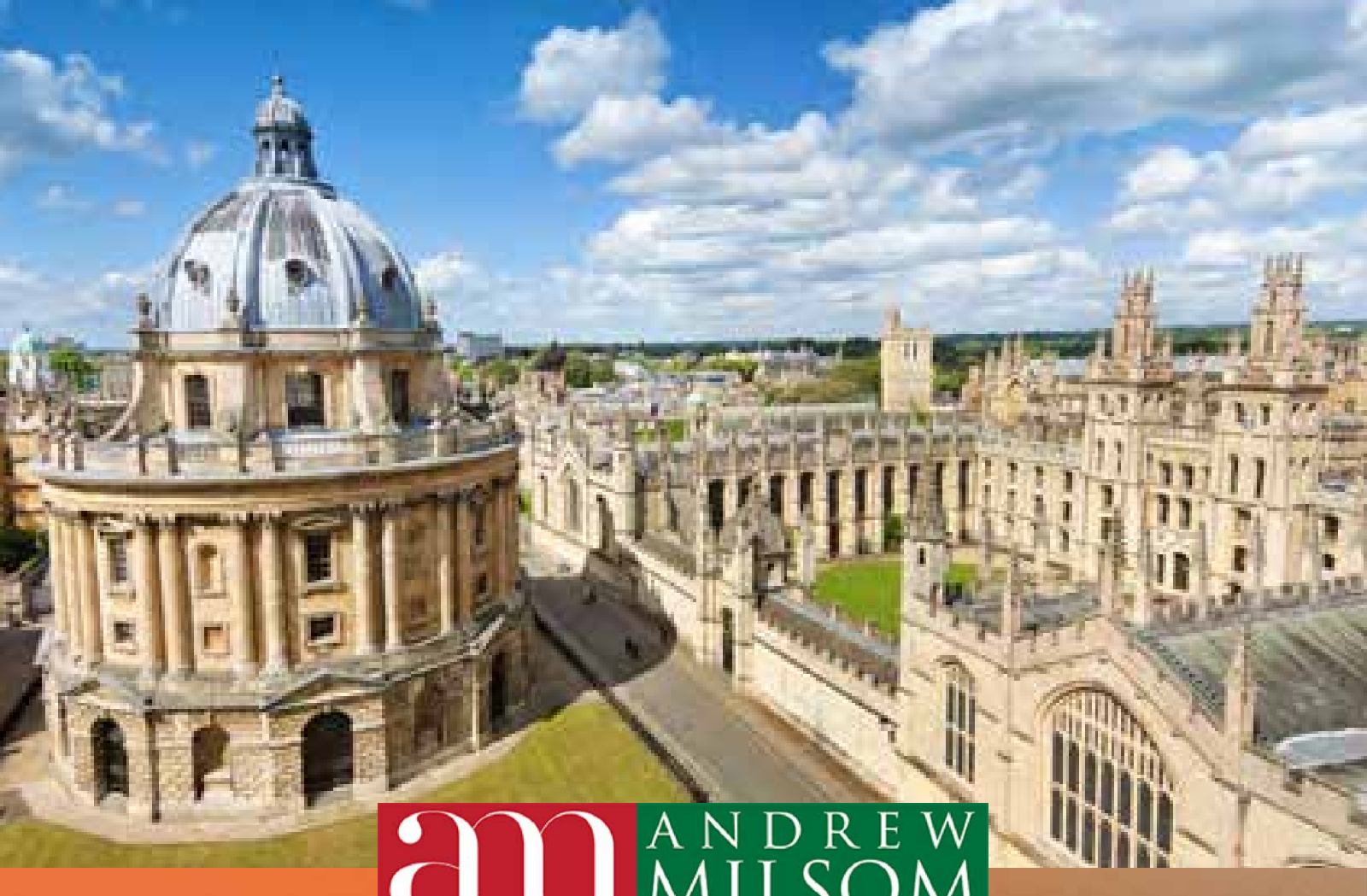
BY ROAD

LONDON HEATHROW ————— 29 MINS

READING ————— 40 MINS

OXFORD ————— 47 MINS

** Travel times taken from National Rail and Google Maps.*



am ANDREW MILSOM

For more information, please contact us on

01628 890707 or email

homes@andrewmilsom.co.uk

andrewmilsom.co.uk