




Constables
SALES & LETTINGS

Chester High Road Neston

£1,200 Per Month



Constables is delighted to offer to let, this impressive townhouse that forms part of a carefully renovated and enlarged country residence all set in approximately seven acres of beautifully kept lawned gardens, fields and woodlands. The development is approached via a private tree lined driveway through electric gates. The development incorporates a mix of apartments and mews town houses.

The accommodation is unfurnished and offers flexible living options and comprises on the ground floor, an entrance hall and cloakroom, lounge-diner, and kitchen with an integrated oven, hob, and dishwasher. On the first floor there is the main bedroom with en-suite, a smaller fourth bedroom and family bathroom. On the second floor is bedroom two and three.

Externally there is a private paved patio leading to a lawned area and extensive communal grounds. There is allocated parking and visitor parking.



Constables

SALES & LETTINGS

- Impressive Four Bedroom Town House
- Two Bathrooms & W.C.
- Well-Presented Throughout
- Council Tax Band: D
- Set in Gated Development in 7 Acres of Established Grounds
- Private Garden Area
- Unfurnished
- Kitchen & Lounge-Diner
- Allocated Parking
- Available Immediately.

Entrance Hallway

Cloakroom

Kitchen

10'52" x 5'10" (3.05m x 1.78m)

Lounge/Diner

13'1" x 13'9" max (3.99m x 4.19m max)

First Floor Landing

Bedroom One

9'1" x 13'1" (2.77m x 3.99m)

En-Suite

Bedroom Four

9'5" x 6'8" (2.87m x 2.03m)

Bathroom

5'10" x 5'11" (1.78m x 1.80m)

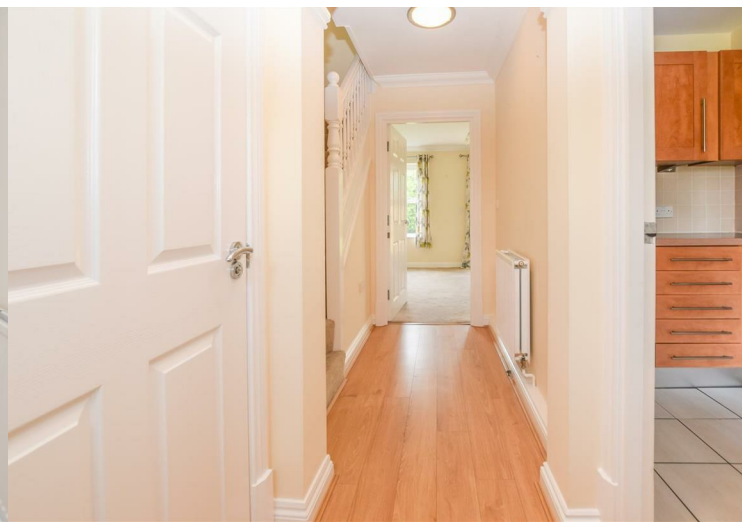
Second Floor Landing

Bedroom Two

13' x 9'10" (3.96m x 3.00m)


Bedroom Three

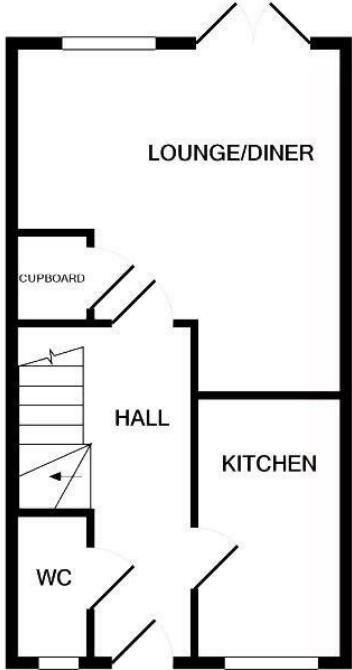
13'12" x 11'9" (3.96m x 3.58m)



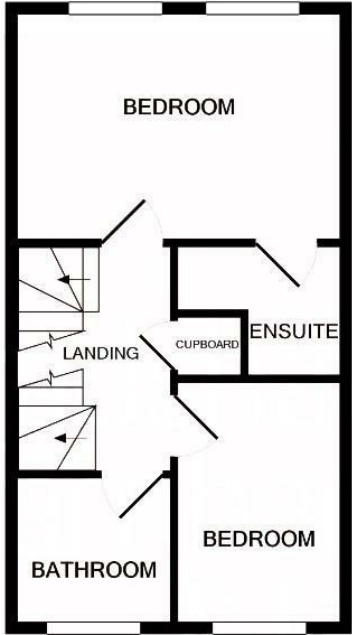


EPC & Floor Plan

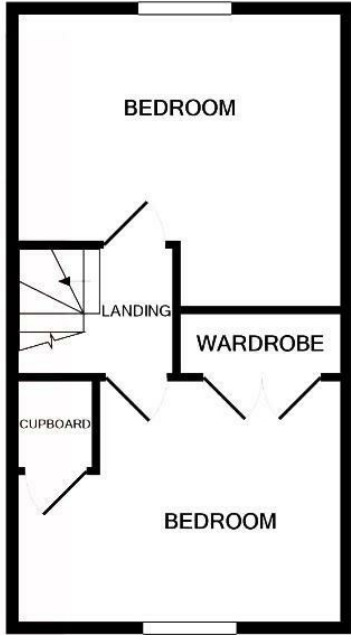
Energy Efficiency Rating		
	Current	Potential
<i>Very energy efficient - lower running costs</i>		
(92 plus) A		89
(81-91) B		
(69-80) C	76	
(55-68) D		
(39-54) E		
(21-38) F		
(1-20) G		
<i>Not energy efficient - higher running costs</i>		
England & Wales	EU Directive 2002/91/EC	



GROUND FLOOR

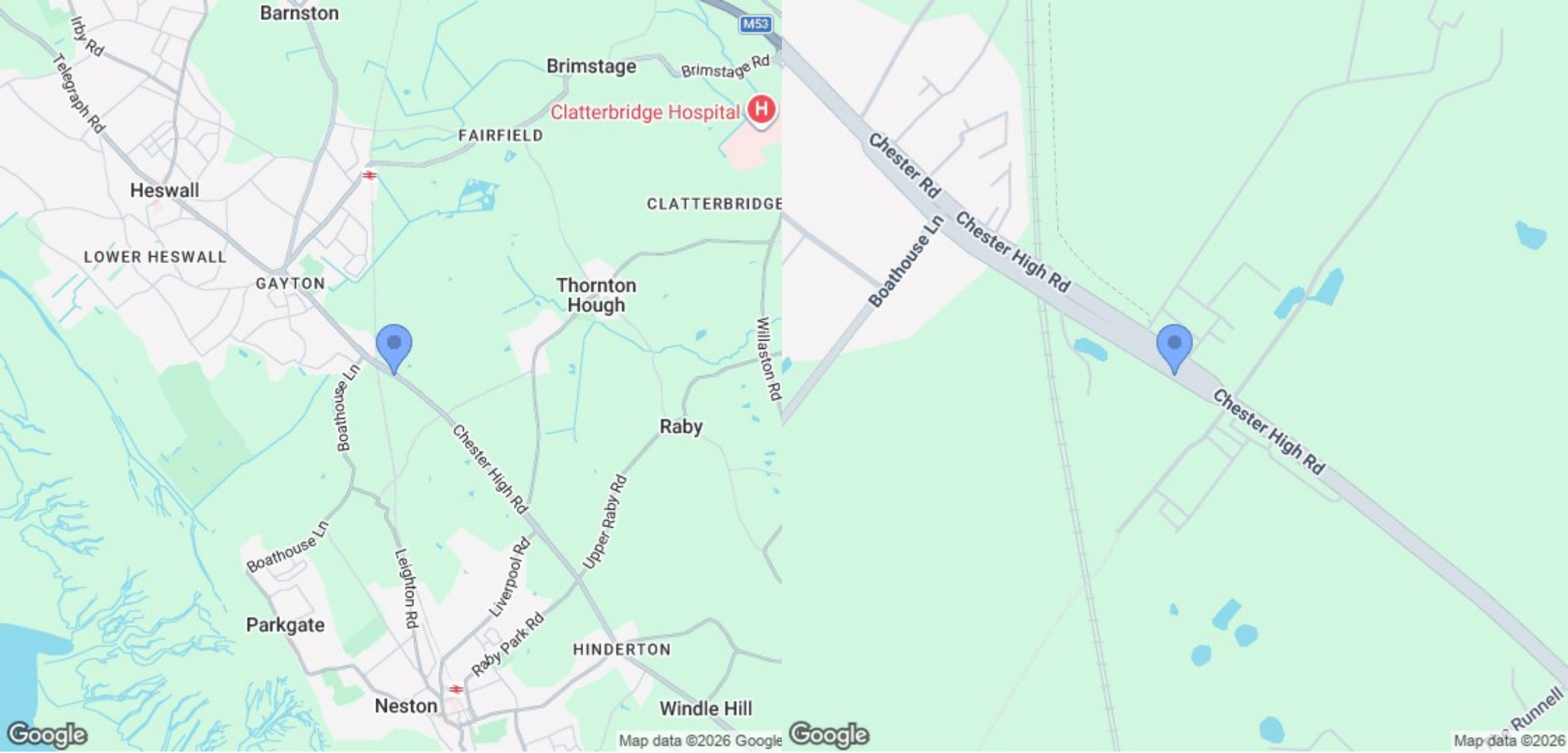


1ST FLOOR



2ND FLOOR

Measurements are approximate. Not to scale. Illustrative purposes only



Location Map

Constables

S A L E S & L E T T I N G S

21 High Street, Neston

South Wirral, Neston, Cheshire

www.constablesestateagents.co.uk

info@constablesestateagents.co.uk

0151 353 1333